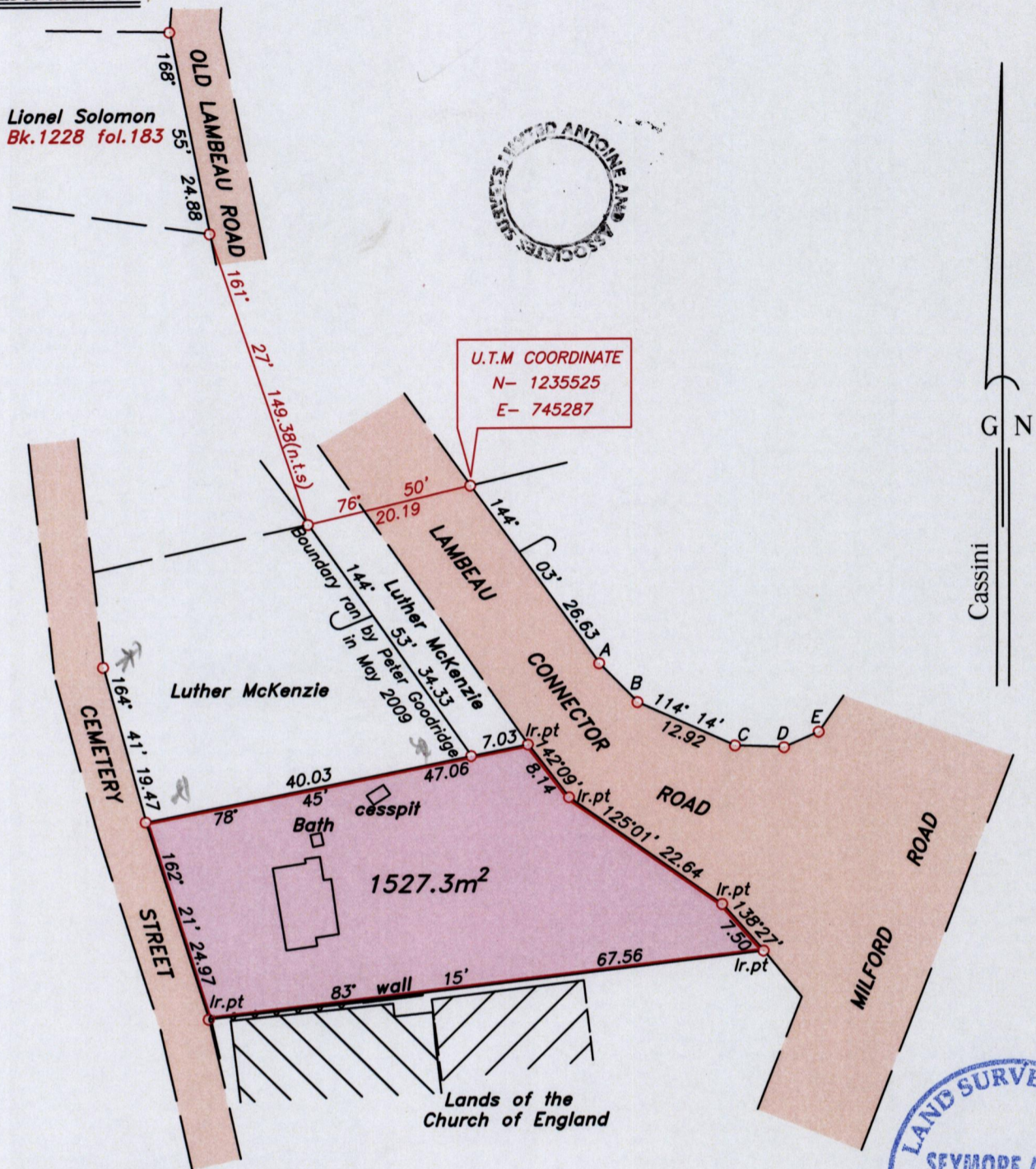


Process ID# 69505

U.P.R.N.....  
To be brought under the provisions  
of the REAL PROPERTY ORDINANCE

Cadastral Sheet I.17.N <sup>IF</sup>/<sub>6/d</sub>  
Ward of Tobago  
Parish of St. Andrew

LAMBEAU

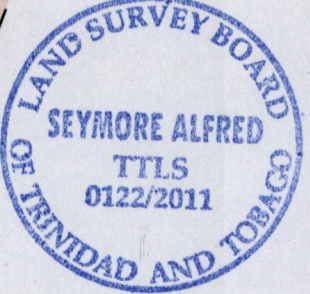


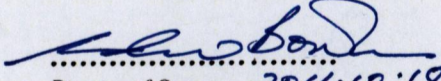
U.T.M COORDINATE  
N- 1235525  
E- 745287

LEGEND

LINE	AZIMUTH	DISTANCE
A-B	135° 22'	6.60
C-D	92° 20'	5.91
D-E	66° 00'	4.55

●●●●●●●●●● wire fence



Approved   
Director of Surveys 2011.10.19

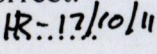
Note- UTM Zone 20 (WGS 84) Coordinates obtained from hand held GPS receiver  
± 7.00m

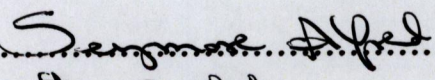
SCALE 1:750

○ Denotes iron found, except otherwise stated.  
Bearings are grid based on solar observations

Distances are in metres

PLAN of a parcel of land coloured pink in the Ward of Tobago  
Containing one thousand five hundred and twenty seven point three square metres.  
Surveyed by me, with due authority on 8th & 15th July 2010 for Anella Bobb.  
In accordance with Regulation 25 (1) of the Land Surveyors' Regulations 1998, I certify that this plan is correct.

Checked by  17/10/11  
Entered .....



K. A. A. L. Trinidad & Tobago Land Surveyor ..... 2011.  
27.6.2013 Path: \\aasi-server\2010\b205\r\_bobb.dwg