

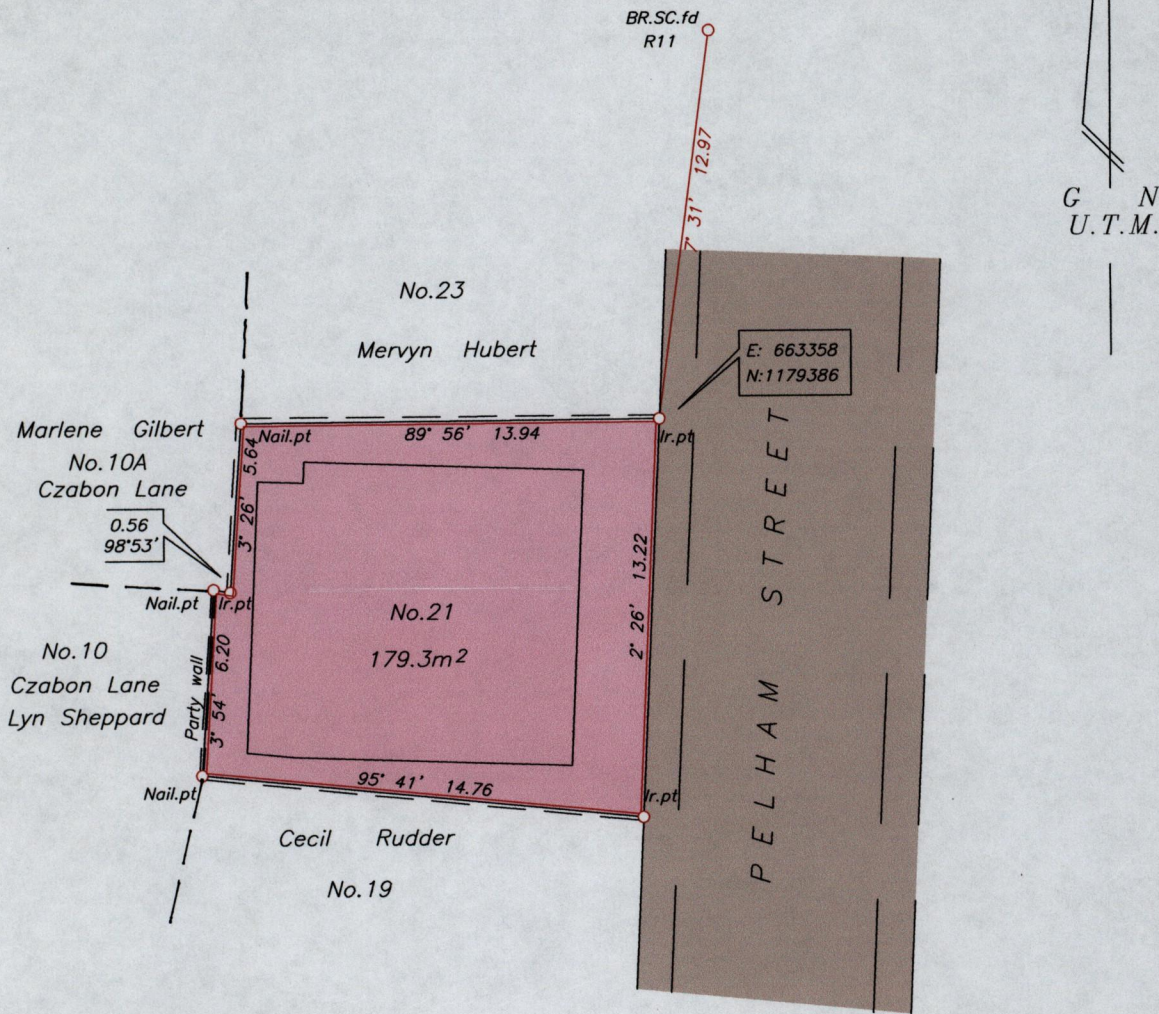
To be brought under the provisions of the Real Property Ordinance.

Cadastral Sheet A.20.G. 13E / 3/c

City of Port of Spain

County of St. George

PROCESS ID # 37409



Approved

*[Signature]*  
 Director of Surveys  
 2011.10.5

Br Sc R11-Br S11 2' 22' 56.52  
 Br Sc R11-Br 13/093 91' 45' 12" 127.653

○ Denotes Iron put except where otherwise indicated.

— — — Denotes Wall

Co-ordinates are UTM zone 20N Naparima Datum +/-1m  
 obtained from handheld GPS  
 Bearings are UTM grid based on control marks.

SCALE 250  
 Distances are in metres

PLAN of a Parcel of land coloured pink in the City of Port of Spain  
 Containing one seven nine point three square metres  
 Surveyed by me, with due authority, on 3rd September 2010 for Yvonne Brown  
 In accordance with Regulation 25 (1) of the Land Surveyors' Regulations 1998,  
 I certify that this plan is correct.

Checked by *[Signature]* 11.06.21

*[Signature]*

Entered CMIS 11.06.2012 Trinidad & Tobago Land Surveyor... 7th Oct 2010