

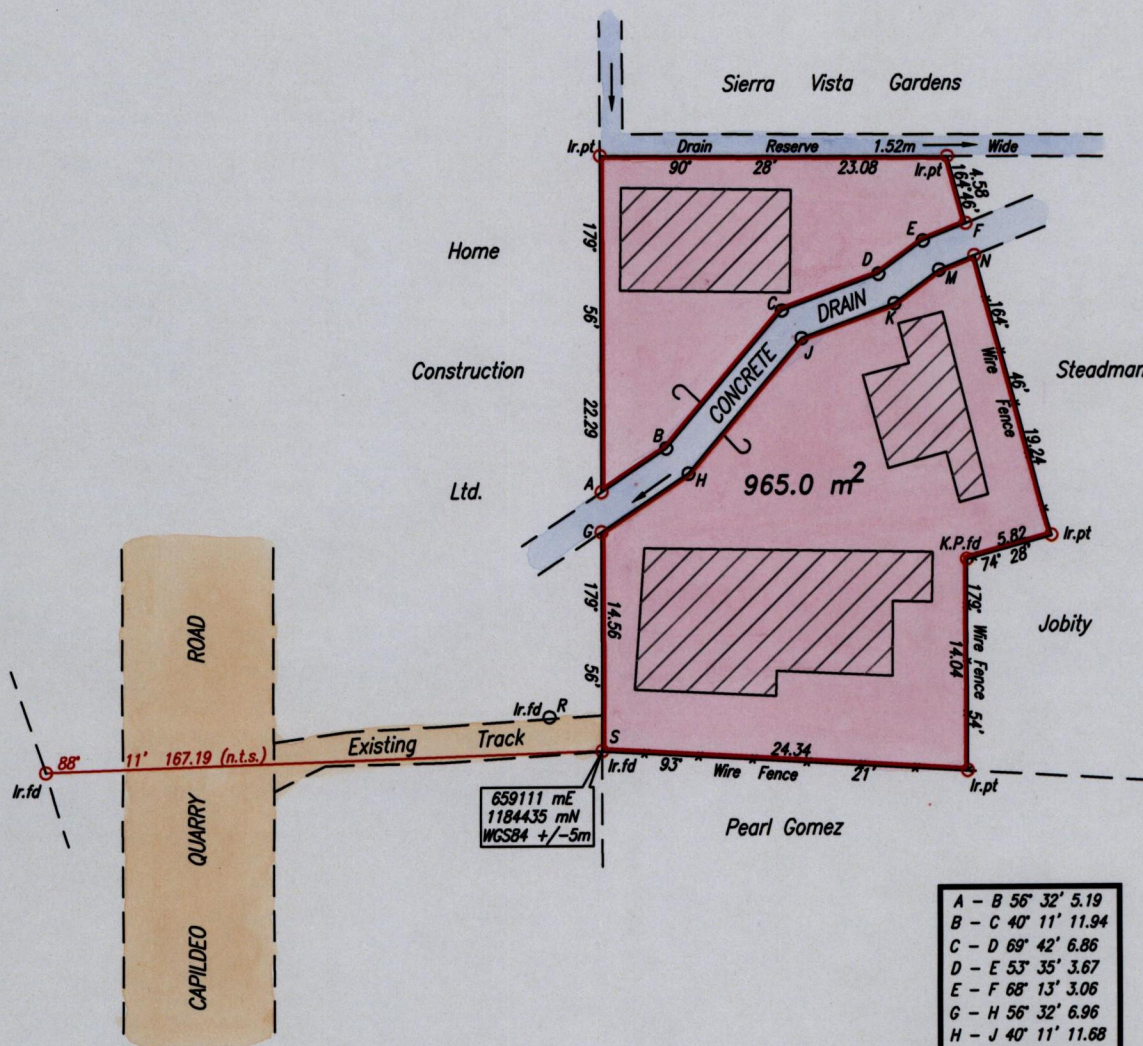
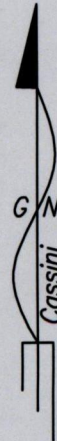
Cadastral Sheet A.14.L 13A
Ward of Diego Martin 3/c
County of St. George

To be brought under the Provisions of the
Real Property Ordinance

PROCESS ID # 42596

PETIT VALLEY

Vide Bk.57 Fol.81
Bk.1104 Fol.190
Plan J.C.110A



A - B	56° 32'	5.19
B - C	40° 11'	11.94
C - D	69° 42'	6.86
D - E	53° 35'	3.67
E - F	68° 13'	3.06
G - H	56° 32'	6.96
H - J	40° 11'	11.68
J - K	69° 42'	6.59
K - M	53° 35'	3.70
M - N	68° 13'	2.52
A - G	179° 56'	2.64
F - N	164° 46'	2.21
R - S	123° 27'	4.18

Approved

[Signature]
Director of Surveys 2011-9-12

SCALE 1:500

Distances are in metres

Coordinates obtained from hand held G.P.S.

o Denotes No. mark put except where otherwise stated

Bearings are based on Solar Observations

PLAN of a Parcel of land coloured pink in the Ward of Diego Martin

Containing nine hundred and sixty five point zero square metres

Surveyed by me, with due authority, on October 18th 2010 for Phyllis Superville

In accordance with Regulation 25 (1) of the Land Surveyors' Regulations 1998,

I certify that this plan is correct.

Checked by

[Signature] 5/9/11

[Signature]

Entered on C.M.S. 06-2012 Trinidad & Tobago Land Surveyor. 6th June 2011.

PATH = AD4004 C:/DEO/SUPERVILLE DWG.

