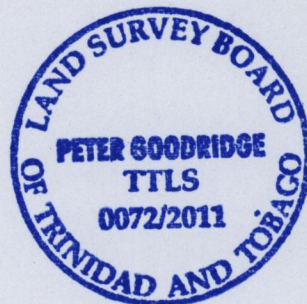
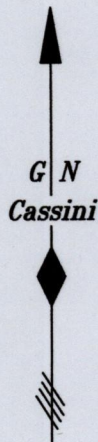
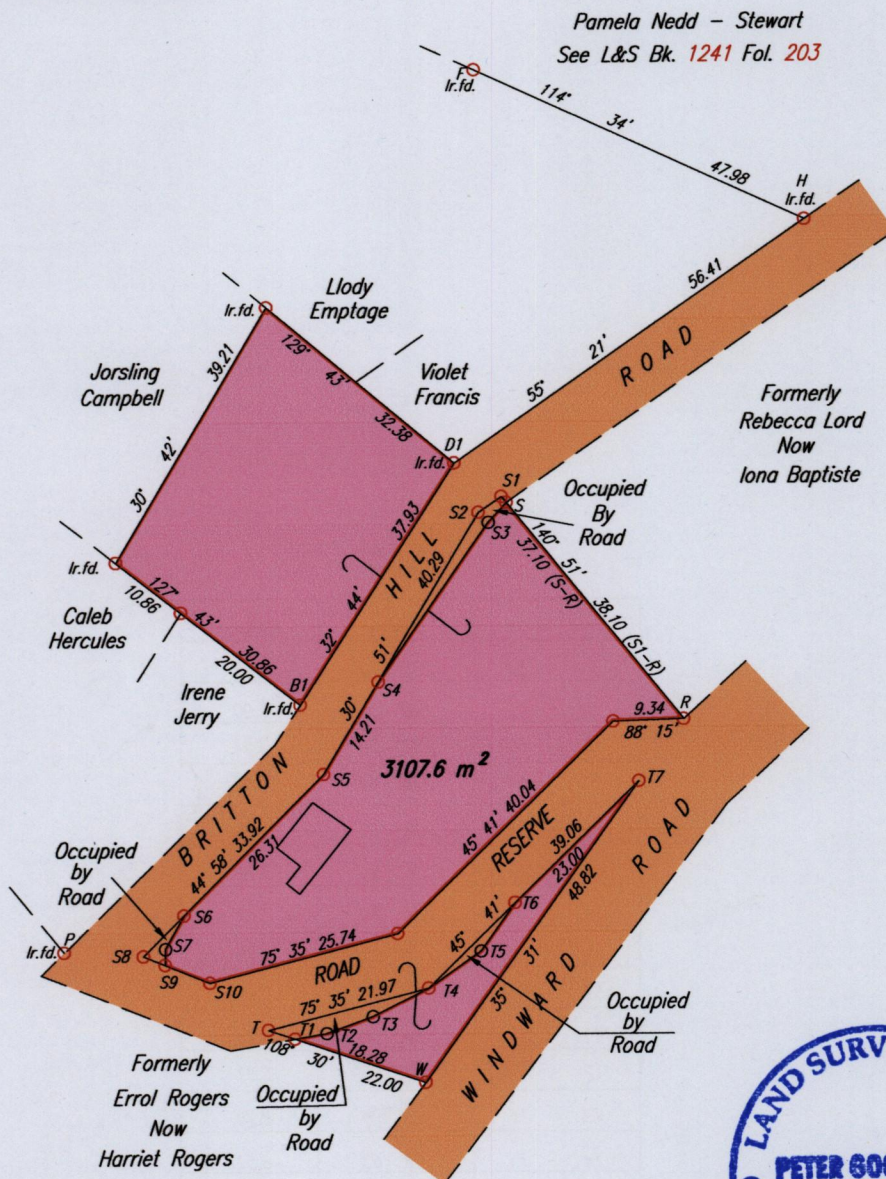


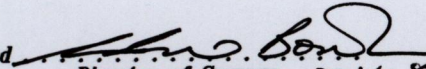
To be brought under the Provisions of the
Real Property Ordinance

ROXBOROUGH

Process ID # 41494



Coordinates of T (lr.pt.): 0764958mE, 1244733mN
U.T.M. 20 WGS 84 (+/- 6.00m)
G.P.S. Direct Observation

Approved 
Director of Surveys 2011.8.25

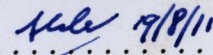
Previous Survey Plan filed in
L&S Bk. 1149 Fol. 63
L&S Bk. 1066 Fol. 206

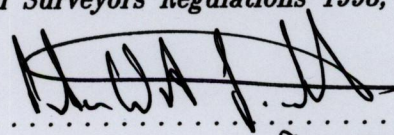
- Denotes Peg put
 - Denotes Iron put except where otherwise stated
- Bearings are Cassini Grid based on Solar Observations

SCALE 1:1000
Distances are in METRES

PLAN of a Parcel of land coloured pink in the Ward of Tobago
Containing three thousand one hundred and seven point six square metres
Surveyed by me, with due authority, on the 11th of September 2008 & 17th October 2009
for Euris Caruth

In accordance with Regulation 25 (1) of The Land Surveyors Regulations 1998,
I certify that this plan is correct.

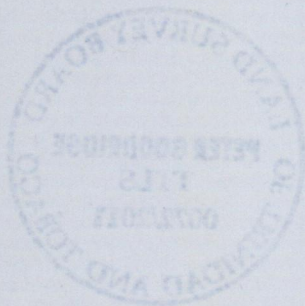
Checked by  19/8/11


..... TTLS
S. May

Entered on C.M.I.S. 20-05-2012

LEGEND

From	To	Bearing	Distance
S1	- S2	235° 40'	3.68
S1	- S	140° 51'	1.00
S	- S3	222° 20'	3.54
S3	- S4	214° 49'	25.67
S6	- S7	209° 20'	5.05
S7	- S9	180° 52'	2.14
S6	- S8	224° 58'	7.61
S8	- S9	111° 57'	3.10
S9	- S10	111° 57'	6.40
T1	- T2	80° 08'	4.28
T2	- T34	70° 08'	6.51
T3	- T4	63° 26'	8.29
T4	- T5	55° 03'	8.51
T5	- T6	35° 27'	7.79
S1	- D1	305° 32'	7.67
B1	- P	223° 52'	45.32
T7	- R13	48° 20'	9.80
T	- S10	309° 07'	9.97



1369/101