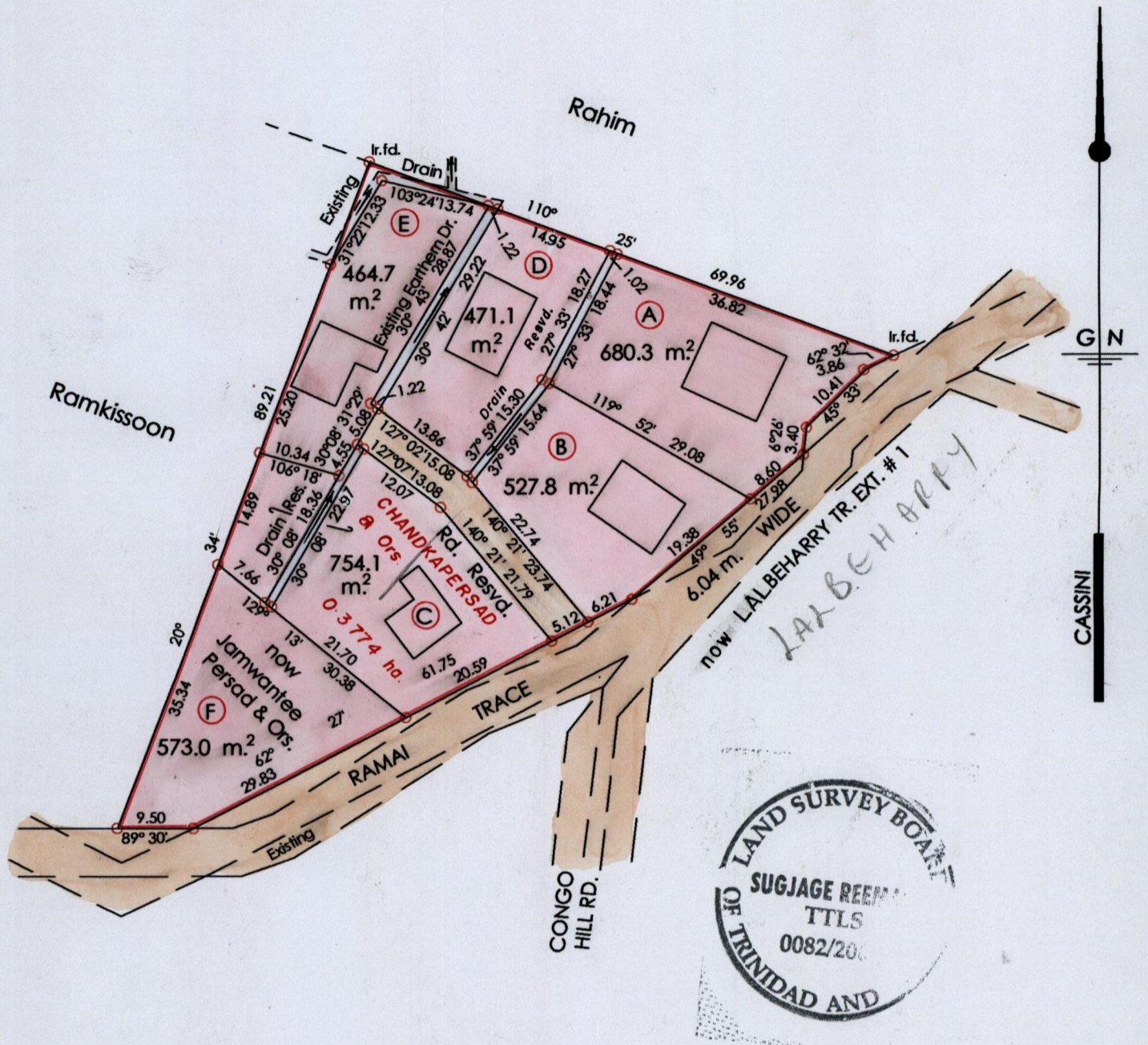


R.P.O. Vol. 7 fol. 603  
C.T. Vol. 3766 fol. 351

Ward of Naparima  
County of Victoria  
Cadastral Sheet ( G.13. B & C )  $\frac{63 F}{1/b}$

Plan J.B. 100



Approved *[Signature]*  
Director of Surveys  
2005.12.07

○ Denotes Iron Put Except  
Otherwise Stated

SCALE : 1 : 750

Note: Bearings are cassini grid based on solar observations Distances are in metres  
PLAN of 6 Parcels of land coloured pink in the Ward of Naparima  
Containing together three thousand four hundred and seventy one sq. metres  
Surveyed by me, with due authority, in March 2003  
In accordance with Regulation 25 (1) of the Land Surveyors' Regulations 1998,  
I certify that this plan is correct.

Checked by *[Signature]* 2005.12.2 *[Signature]*

Entered on ..... Trinidad & Tobago Land Surveyors' 23<sup>rd</sup> May, ..... 2005