

135892

92

R.P.O. Vol. 11 Fol. 389

C.T. Vol. 2776 Fol. 103

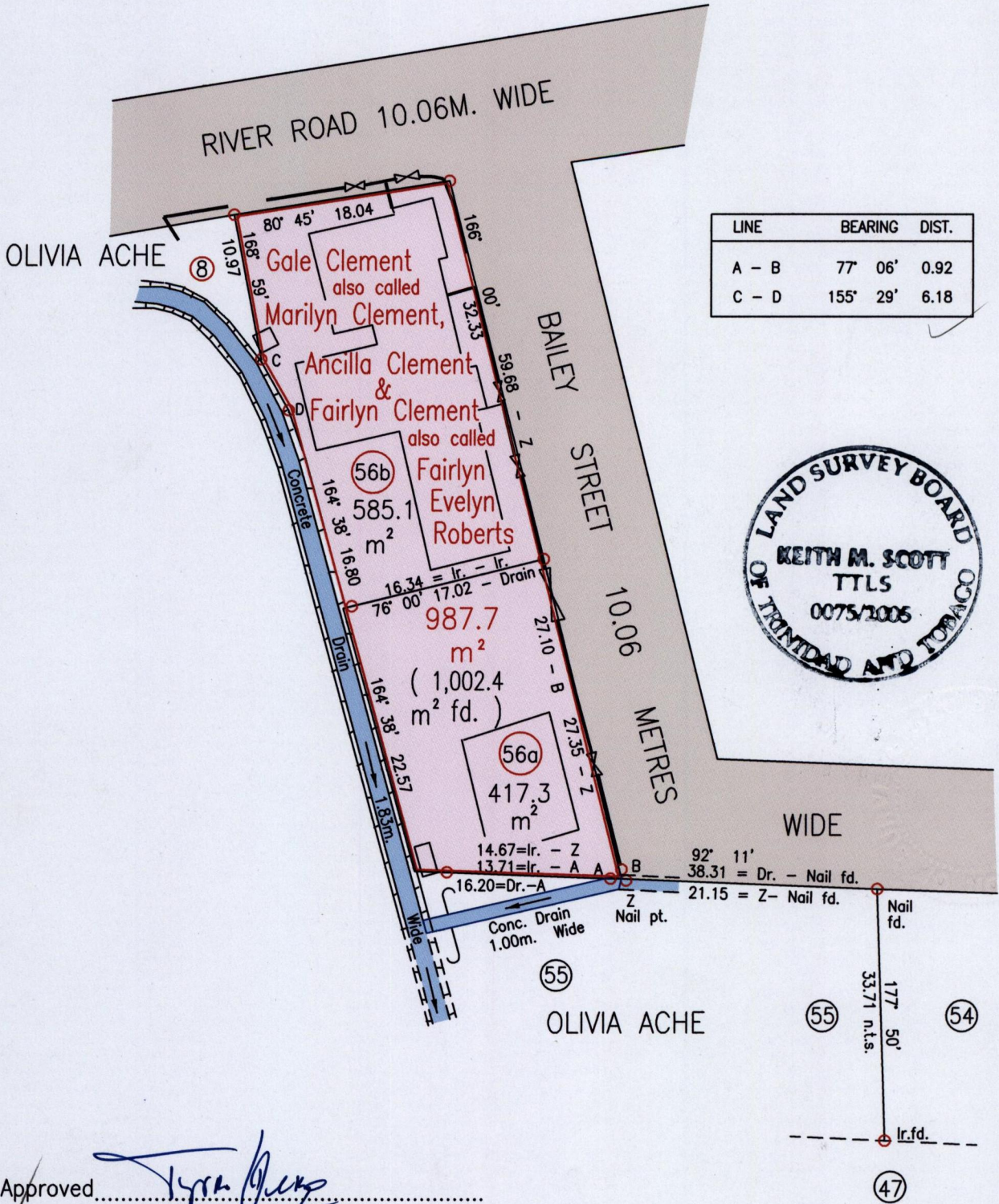
U.P.I.N. No.

Cadastral Sheet $\frac{24C}{2/c}$, B.25.A.

Borough of Arima

County of St. George

SEE GENERAL PLAN IN VOL. 2678 FOL. 61



Approved.....

Director of Surveys

2005-12-07

Bearings are Cassini Grid based on Solar Obs.

Note to obtain compass bearings add 10 minutes

○ Denotes Iron Put unless otherwise stated

Plan of 2 parcels of land coloured pink in the Borough of Arima Containing together one thousand and two point four square metres Surveyed by me, with due authority, in November 2003

In accordance with Regulation 25(1) of the Land Surveyors' Regulations 1998, I certify that this plan is correct.

Checked by.....

Entered on.....

Trinidad & Tobago Land Surveyor 14th October 2005

Denotes concrete wall

SCALE 1:500

Distances are in Metres