

135}}

1358/85

}}5

R.P.O. Vol. 279 Fol. 17

Cadastral Sheet  $\frac{25E}{2/d, 4/a \& 4/b}$  E .1. D.

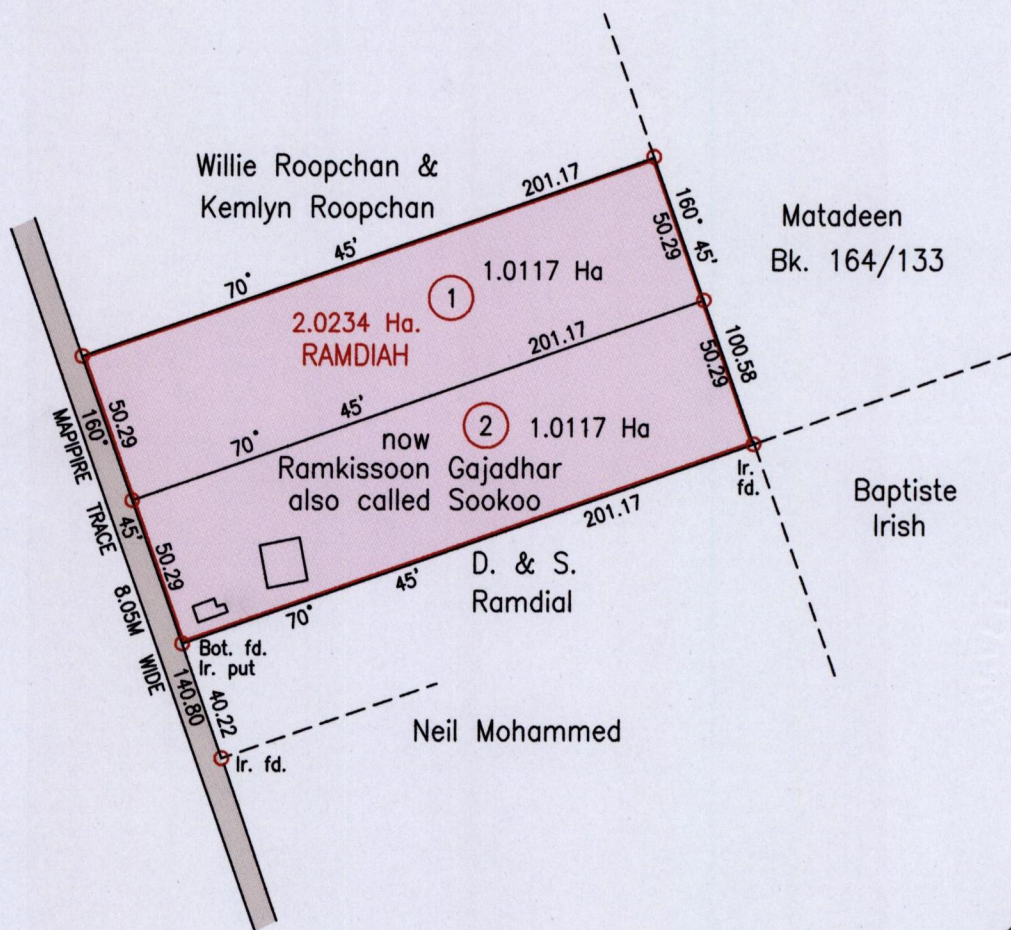
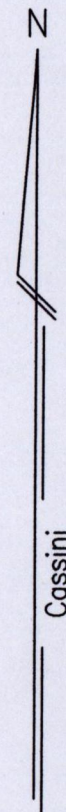
C.T. Vol. Fol.

Ward of Tamana

U.P.I.N. No.

County of St . Andrew

Vide
Bk 164:122



Approved

*[Signature]*  
 Director of Surveys  
 2005-11-29



Bearings are Cassini Grid based on Solar Obs.  
 To obtain compass bearings add 15 minutes

SCALE 1:2500  
 Distances are in Metres

○ Denotes Iron Put unless otherwise stated

Plan of 2 Parcels of land coloured pink in the Ward of Tamana  
 Containing together two point zero two three four hectares  
 Surveyed by me, with due authority, in September 2001 and June 2002  
 In accordance with Regulation 25(1) of the Land Surveyors' Regulations 1998,  
 I certify that this plan is correct.

Checked by *[Signature]* 2005-11-22

*[Signature]*

Entered on .....

Trinidad & Tobago Land Surveyor *28<sup>th</sup> October* 2005