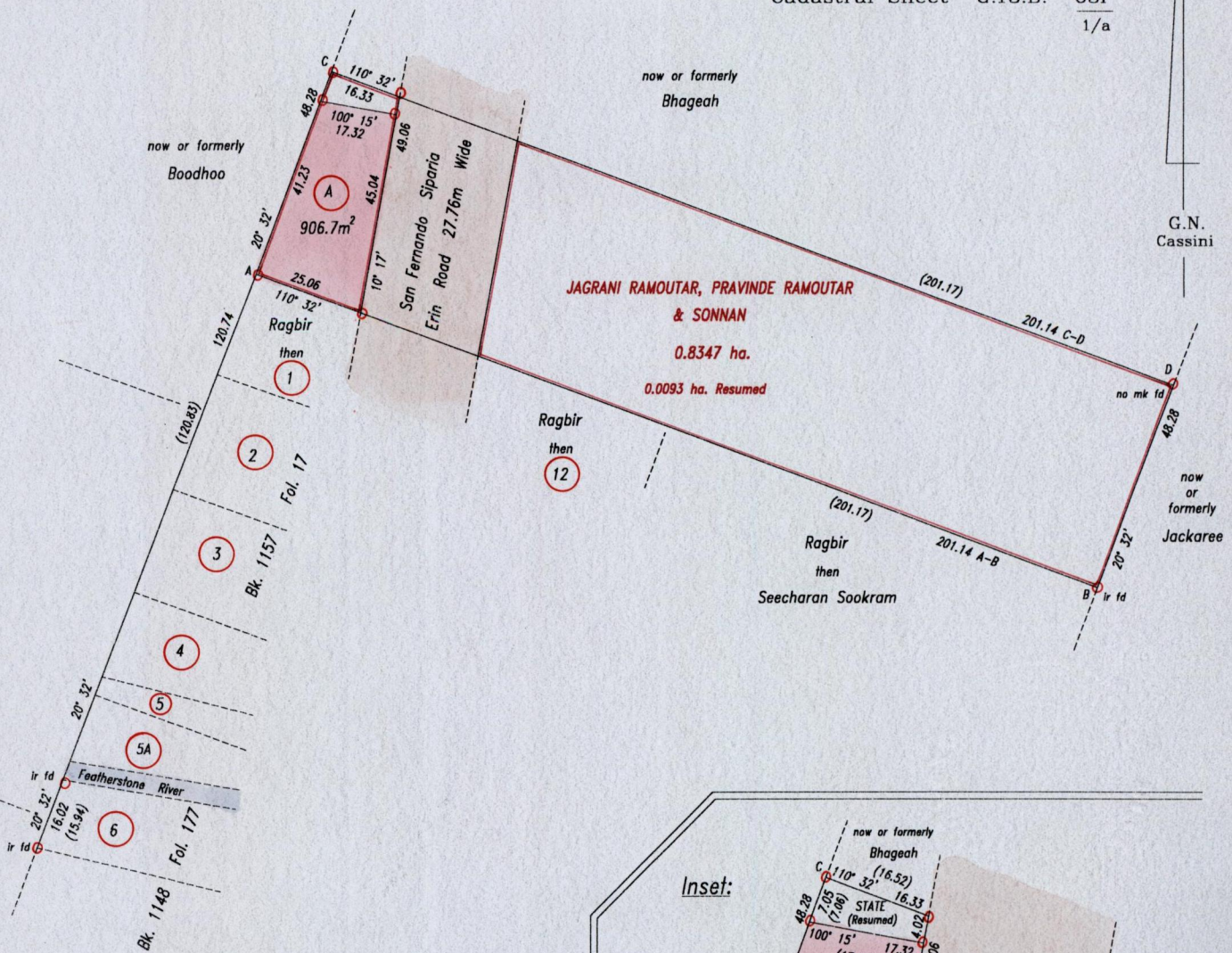


1358

131

R.P.O. Vol. 54 Fol. 293
C.T. Vol. 4484 Fol. 351
U.P.R.N. No.:

Ward of Naparima
County of Victoria
Cadastral Sheet G.13.B. 63F
1/a

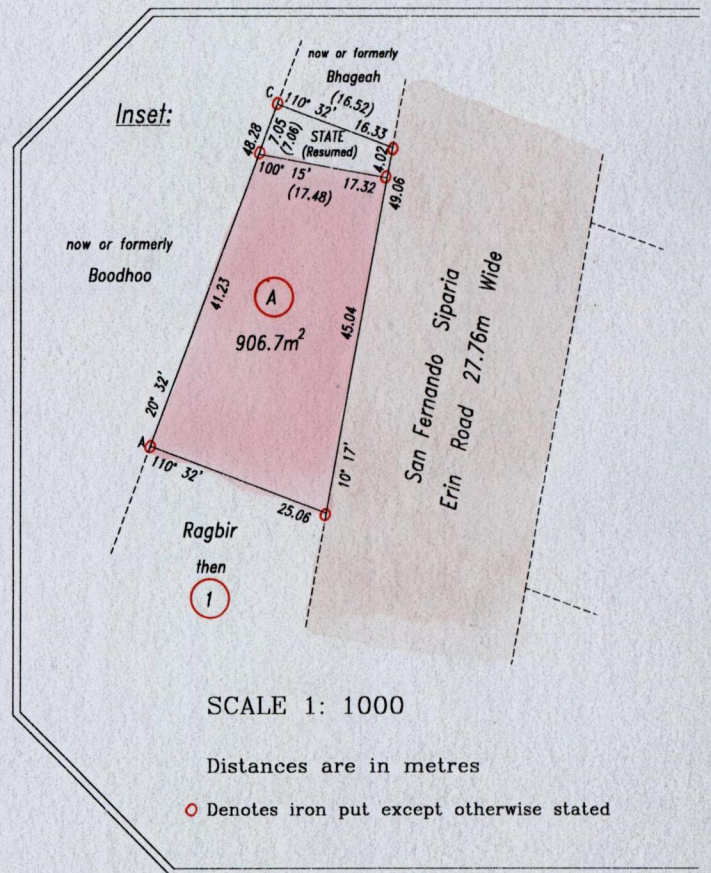


Reference: Bk.720 Fol.127
Plan X.A. 75

SCALE 1: 1500

Distances are in metres

○ Denotes iron put except otherwise stated



SCALE 1: 1000

Distances are in metres

○ Denotes iron put except otherwise stated

Approved

Director of Surveys

2005-11-29

Bearings are Cassini Grid based on Solar Observations

PLAN of a parcel of land coloured pink in the Ward of Naparima
Containing nine hundred and six point seven square metres

Surveyed by me, with due authority, in March & September 2003 & September 2005

In accordance with Regulation 25(1) of the Land Surveyors' Regulations 1998, I certify that this plan is correct.

Checked by

shahid 19/9/2005

Entered

L.A. Revealed

Trinidad & Tobago Land Surveyor

19/9/2005

