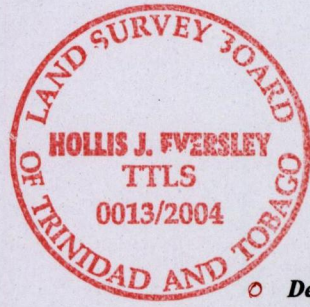
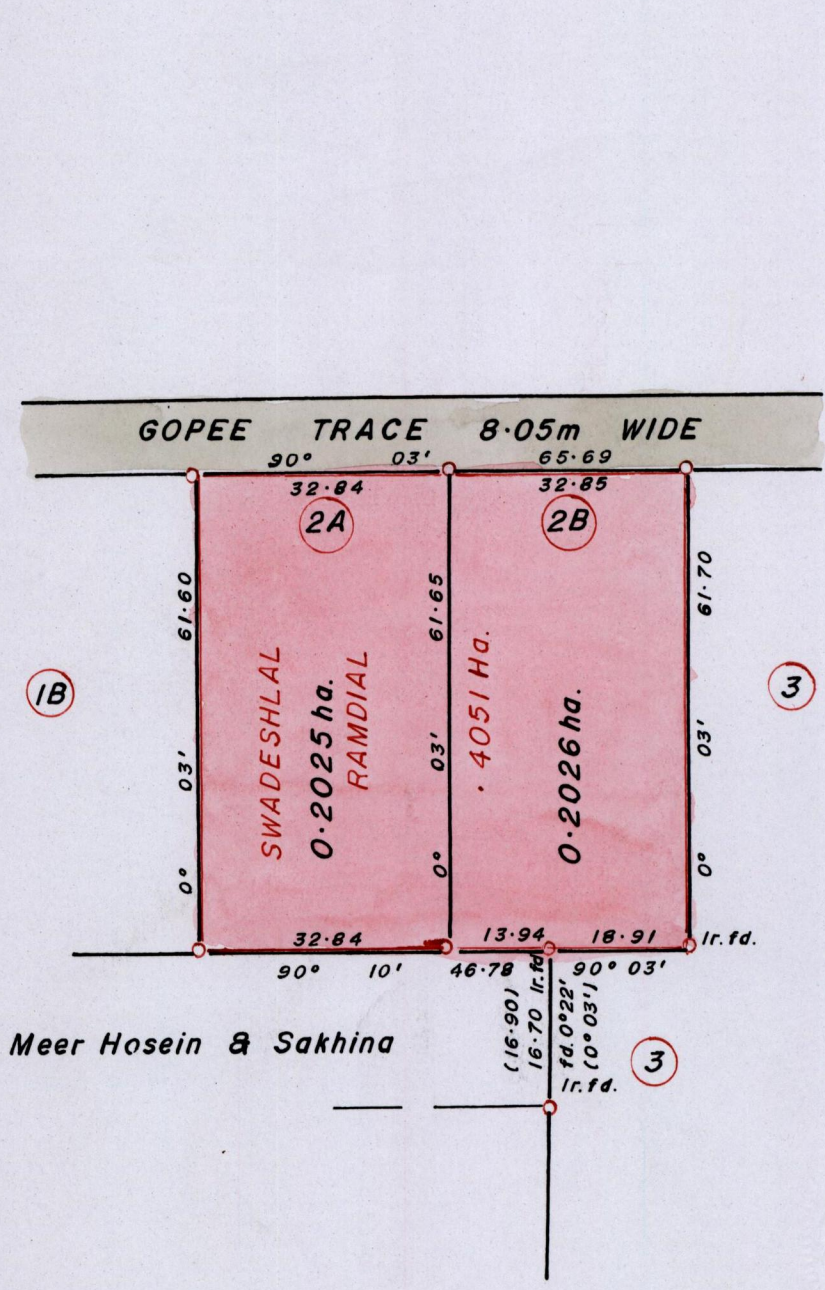


13511358/70

70

R.P.O. Vol. 121 Fol. 581
C.T. Vol. 3147 Fol. 89

Ward of Siparia.
County of St. Patrick.
Cadastral Sheet G.13.E 63E
2/d



Approved
 Director of Surveys 2005.11.26

Bk. 395 : 245
 Denotes Iron Put except otherwise stated.
 Distances are in METRES.
 Scale : 1 / 1000.

Bearings are Cassini Grid based on Solar Obs.
Plan of 2 Parcels of Land coloured Pink in the Ward of Siparia.
Containing together zero point four zero five one hectare.
Surveyed by me, with due authority, in July 2004.

In accordance with Reg. (25)1 of the Land Surveyors' Regulation 1998,
I certify that this plan is correct.

Checked by 2005.10.31
 Entered

.....
 Trinidad and Tobago Land Surveyor 2004.