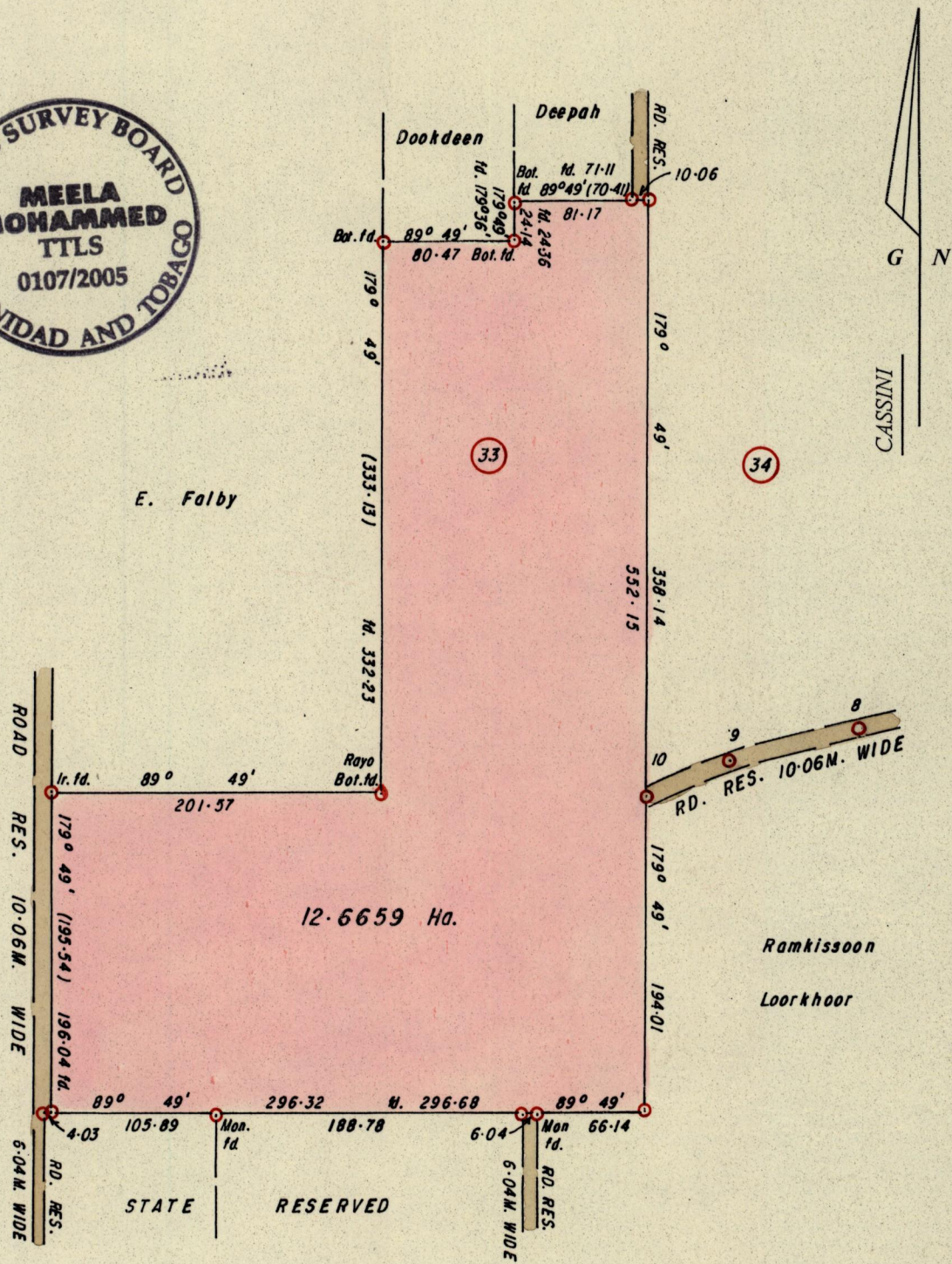


1358

67



Approved *[Signature]*
Director of Surveys
2005.11.2

○ Denotes Iron put unless otherwise stated
Bearings are Cassini Grid based on Solar Obs.
SCALE 1 / 4000
Distances are in METRES

Note: To Obtain compass bearings add/subtract minutes

PLAN of a Parcel of land coloured PINK in the Ward of Cocal
Containing twelve point six six five nine hectares
Prepared by me, with due authority, from a Survey done by Seeram Kallicharan in April 1983.
In accordance with Regulation 25 (1) of the Land Surveyors' Regulations 1998,
I certify that this plan is correct.

Checked by *[Signature]*
2005.10.26

Meela Mohammed

Entered Trinidad and Tobago Land Surveyor... *31st. May* 2005