

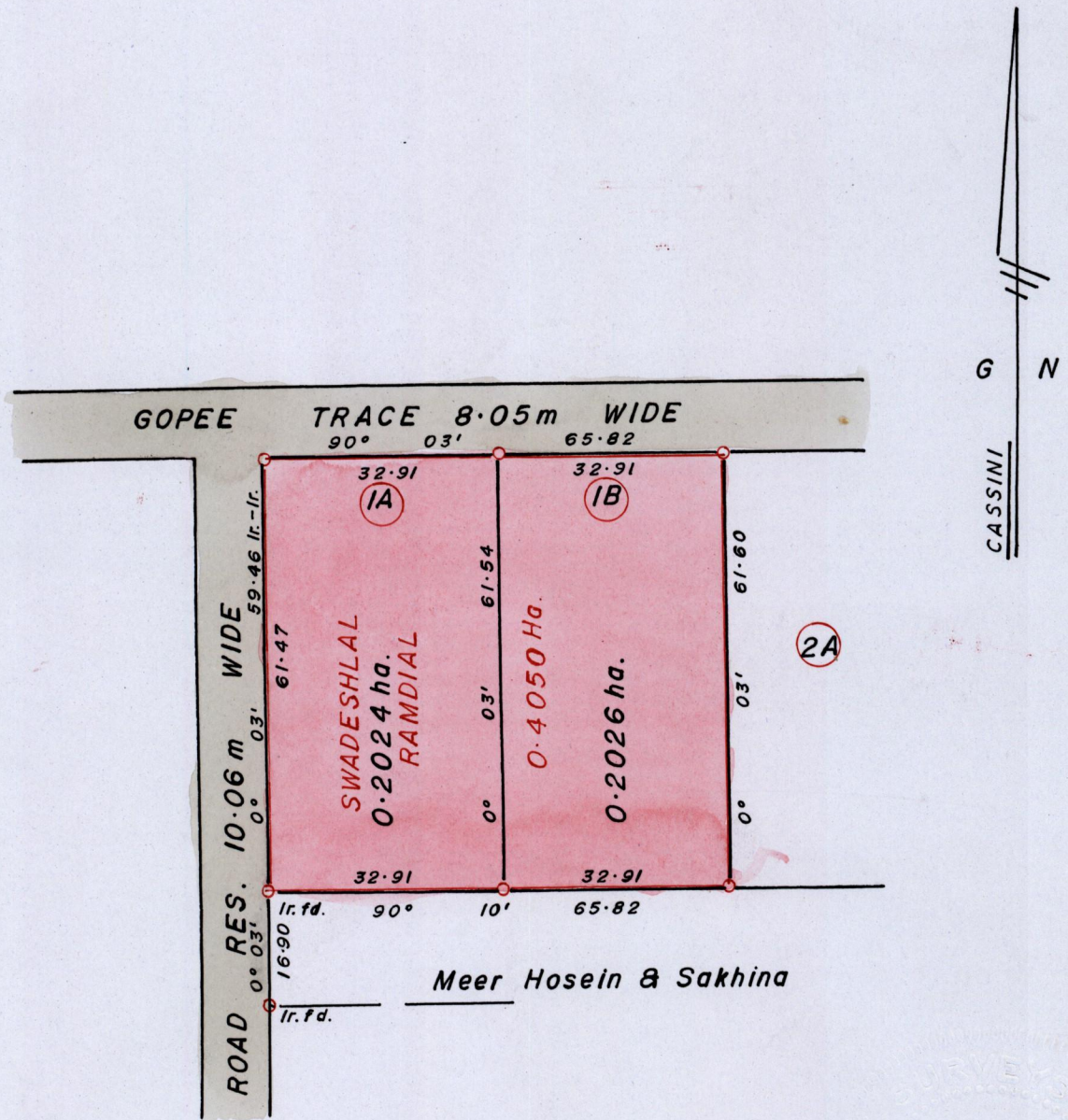
1358

65

R.P.O. Vol. 121
C.T. Vol. 3147

Fol. 581
Fol. 87

Ward of Siparia.
County of St. Patrick.
Cadastral Sheet G.13.E 63E
2/d



Approved *[Signature]*
Director of Surveys 2005.11.2

Bk. 395 : 245
○ Denotes Iron Put except otherwise stated.
Distances are in METRES.
Scale : 1 / 1000.

Bearings are Cassini Grid based on Solar Obs.
Plan of 2 Parcels of Land coloured Pink in the Ward of Siparia.
Containing together zero point four zero five zero hectare.
Surveyed by me, with due authority, in July 2004.
In accordance with Reg. (25)1 of the Land Surveyors' Regulations 1998,
I certify that this plan is correct.

Checked by *[Signature]* 2005.9.21
Entered

[Signature]
Trinidad and Tobago Land Surveyor 2004.