

1358

59

R.P.O. Vol. 510

Fol. 17

Cadastral Sheet A.19.B. 12F  
2/c

C.T. Vol. 1481

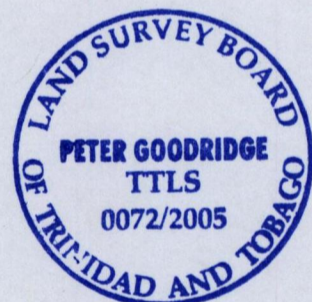
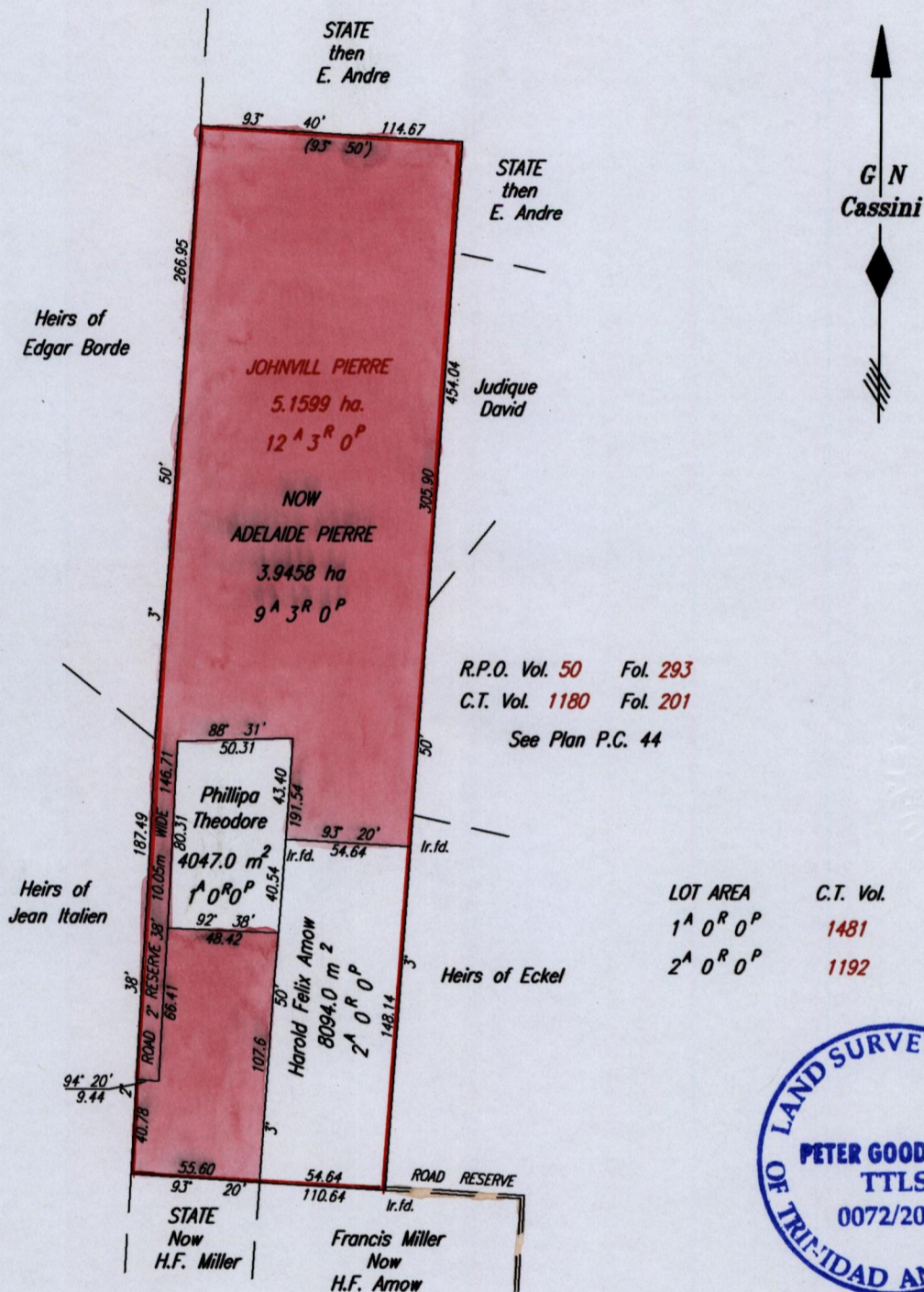
Fol. 349

Ward of Diego Martin

County of St. George

Original Survey in Bk. 936 Fol. 135

REMAINING PORTION PLAN



SCALE 1:3000

Distances are in METRES

Approved .....

*[Signature]*  
Director of Surveys  
2005-10-28

This is a true copy of a diagram of five point one five nine nine hectares originally granted to Johnvill Pierre, showing a portion coloured pink and containing three point nine four five eight hectares being the remainder after two previous transfers of another portion of the land.

In accordance with Regulation 25 (1) of The Land Surveyors' Regulations 1998,

I certify that this plan is correct.

Checked by .....

*[Signature]* .....

Entered on .....

Trinidad & Tobago Land Surveyor  
C:\LESS 2005\TRINIDAD\ANTHONY,LINCOLN\002

5th April 2005