

1358/501

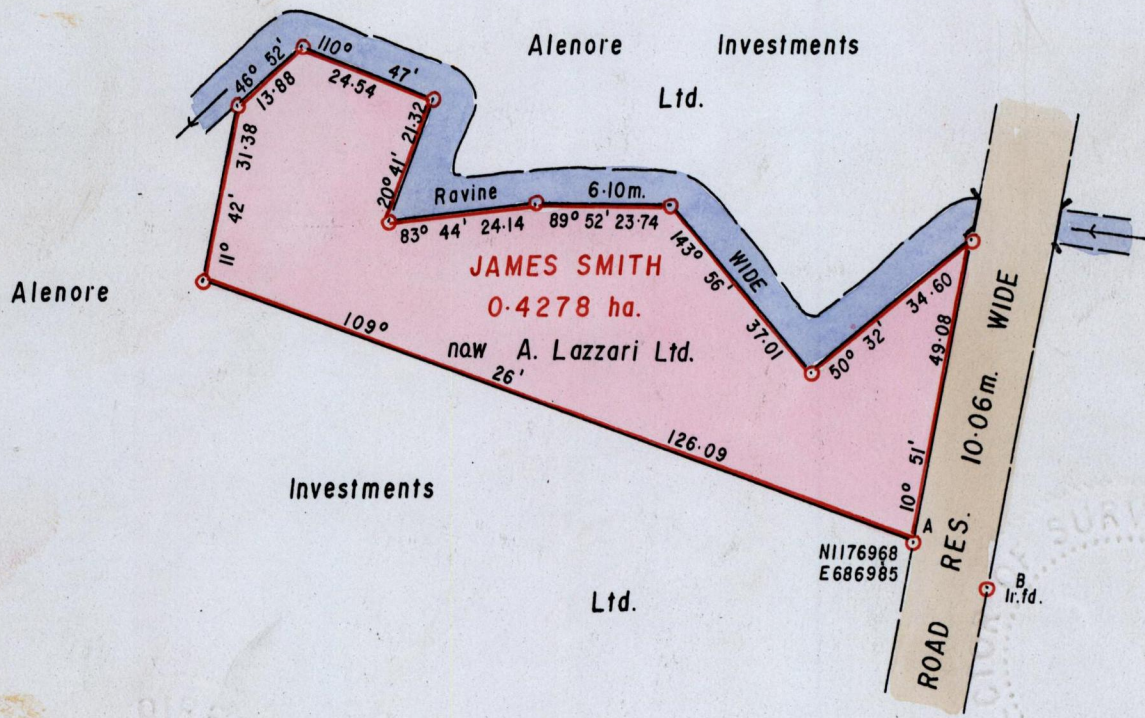
3(1)

R.P.O. Vol. 387
C.T. Vol.

Fol. 495
Fol.

Borough of Arima
County of St. George
Cadastral Sheet B.19.P. 24C
1/a

G. N.
U. T. M



A - B 120°02' 15.13

See S.O. 124/16
See Bk.39 fol.188
See Plan C.A. 46

Approved

[Signature]
Director of Surveys
2006-5-19

○ Denotes Iron put unless otherwise stated
Co-ordinates from Trig. N1177536.34 & E687246.86 (Calvary)

SCALE 1 / 1250
Distances are in METRES

Note: To Obtain compass bearings add/subtract minutes

PLAN of a Parcel of land coloured pink in the Borough of Arima
Containing point four two seven eight hectares
Surveyed by me, with due authority, in October 2005
In accordance with Reg. 25 (1), of the Land Surveyors' Regulations 1998,
I certify that this plan is correct.

Checked by *[Signature]* *[Signature]*

Entered on..... Trinidad and Tobago Land Surveyor... 11th January..... 2006