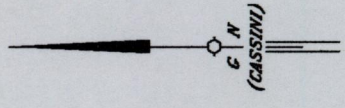
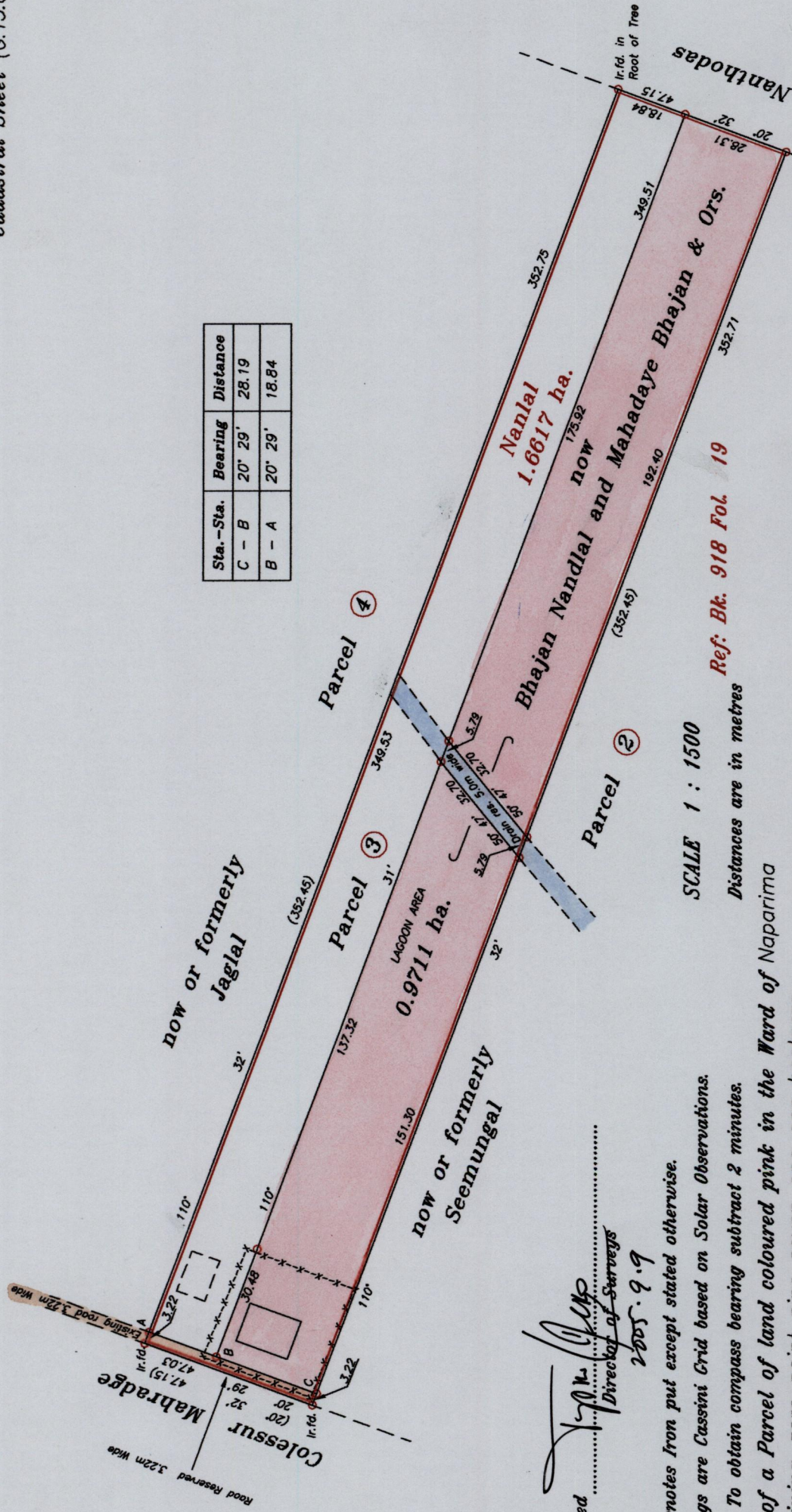


1358

30



| Sta.-Sta. | Bearing | Distance |
|-----------|---------|----------|
| C - B | 20° 29' | 28.19 |
| B - A | 20° 29' | 18.84 |



Approved
 Director of Surveys
 2005.9.9

○ Denotes Iron put except stated otherwise.
 Bearings are Cassini Grid based on Solar Observations.
 Note : To obtain compass bearing subtract 2 minutes.

Plan of a Parcel of land coloured pink in the Ward of Naparima
 Containing zero point nine seven one one hectares
 Surveyed by me with due authority, in October 2001
 In accordance with Regulation 25 (1) of the Land Surveyors' Regulations 1998,
 I certify that this plan is correct.

Checked by M.H. 29/08/05
 Entered on
 Lenny W. Hanomansingh
 Lenny W. Hanomansingh
 TtLS
 0090/2004
 Trinidad & Tobago Land Surveyor 25/11/2004

SCALE 1 : 1500
 Distances are in metres
 Ref: Bk. 918 Fol. 19

