

1358 / 296

296

R.P.O. Vol 197 Fol. 65  
C.T. Vol. 2348 Fol. 311

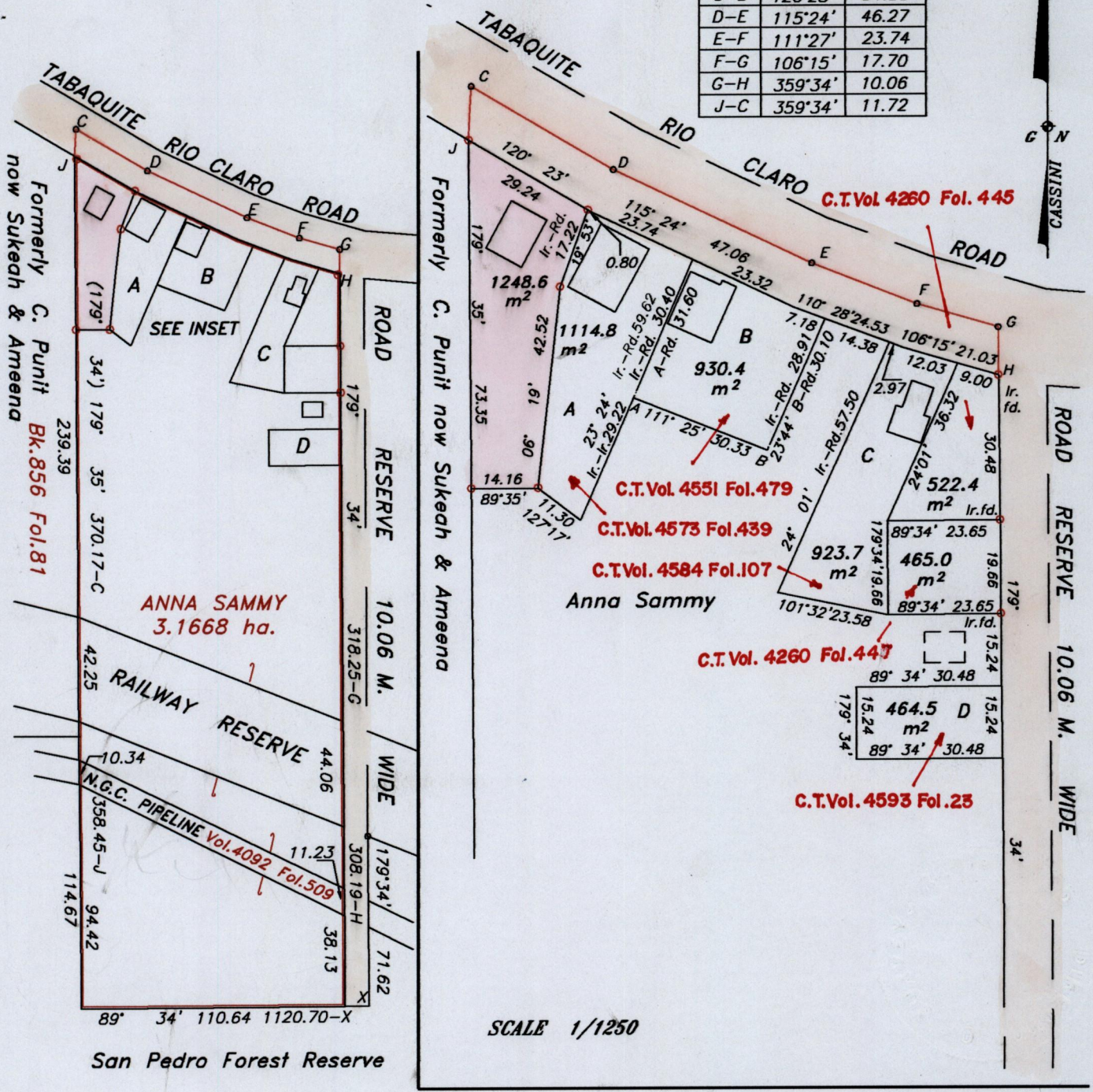
Ward of Charuma  
County of Nariva  
Cadastral Sheet (D.25.K.)

U.P.R.N. No. ....

INSET

55.A  
1/c

LINE	BEARING	LENGTH
C-D	120°23'	34.80
D-E	115°24'	46.27
E-F	111°27'	23.74
F-G	106°15'	17.70
G-H	359°34'	10.06
J-C	359°34'	11.72



Formerly C. Punif  
now Sukeah & Ameena  
Bk. 856 Fol. 81

ANNA SAMMY  
3.1668 ha.

RAILWAY RESERVE  
N.G.C. PIPELINE Vol. 4092 Fol. 509

San Pedro Forest Reserve

Formerly C. Punif now Sukeah & Ameena

C.T. Vol. 4260 Fol. 445

C.T. Vol. 4551 Fol. 479  
C.T. Vol. 4573 Fol. 439  
C.T. Vol. 4584 Fol. 107  
Anna Sammy

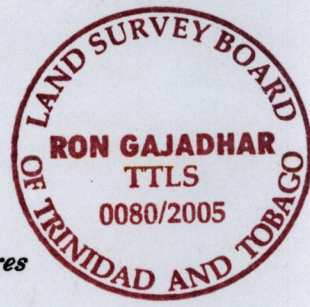
C.T. Vol. 4260 Fol. 447

C.T. Vol. 4593 Fol. 23

SCALE 1/1250

See Bk. 715 Fol. 212  
Bk. 714 Fol. 32

SCALE 1/2500



Approved  
*[Signature]*  
Director of Surveys  
2005-5-15

○ Denotes Iron put except stated otherwise  
Bearings are Grid Cassini based on Solar Observations  
Distances are in metres  
Plan of a Parcel of land coloured pink in the Ward of Charuma  
Containing one thousand two hundred and forty eight point six square metres  
Surveyed by me, with due authority, in July 2004  
In accordance with Reg. 25 (1) of the Land Surveyors' Regulations 1998,  
I certify that this plan is correct.

Checked by *[Signature]*

Entered on..... Trinidad & Tobago Land Surveyor..... 17.10.2005