

1358/293

293

R.P.O. Vol. 105 Fol. 41

C.T. Vol. 1526 Fol. 55

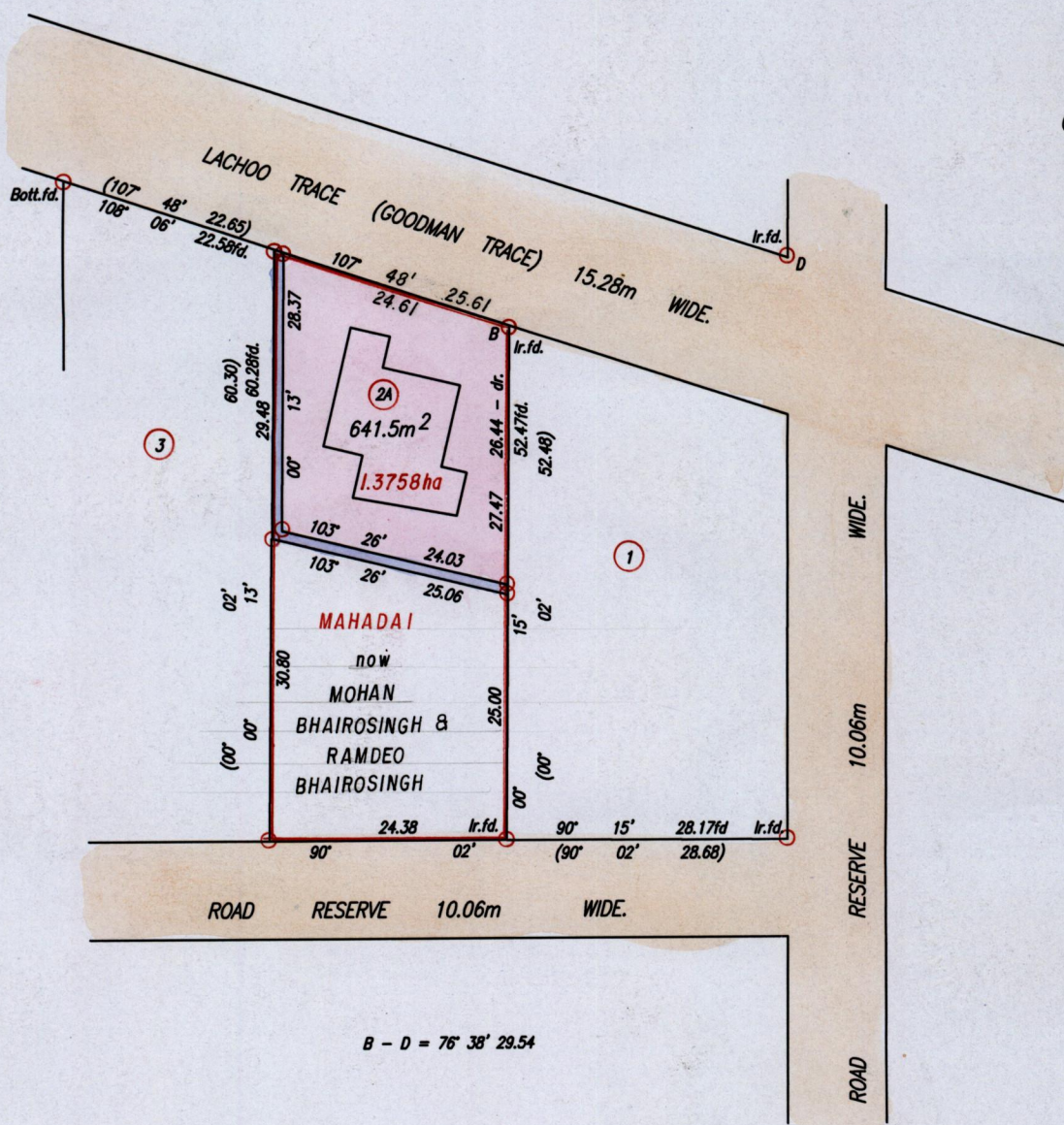
Orig. Bk. 393 fol. 269

Cadastral Sheet G.13.J. 63F

Ward of Siparia

County of St. Patrick.

Cassini
G I N



Drain Res. 1.00m Wide.

Approved

[Signature]
Director of Surveys

2006.5.22

SCALE 1:750

Distances are in Metres

○ Denotes Iron put except otherwise stated.

Bearings are Cassini Grid based on Solar Observations.

PLAN of a Parcel of land coloured pink in the Ward of Siparia
Containing six hundred and forty one point five square metres.

Surveyed by me, with due authority, in May, 2004

In accordance with Regulation 25(1) of the Land Surveyors' Regulations 1998,
I certify that this plan is correct.

Checked by

[Signature] Winston Ramcharan

Entered

Trinidad & Tobago Land Surveyor 4th October . . . 2005

