

1353 / 284

234

R.P.O Vol. 13

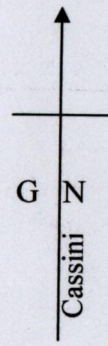
Fol 289

C.T Vol. 4109

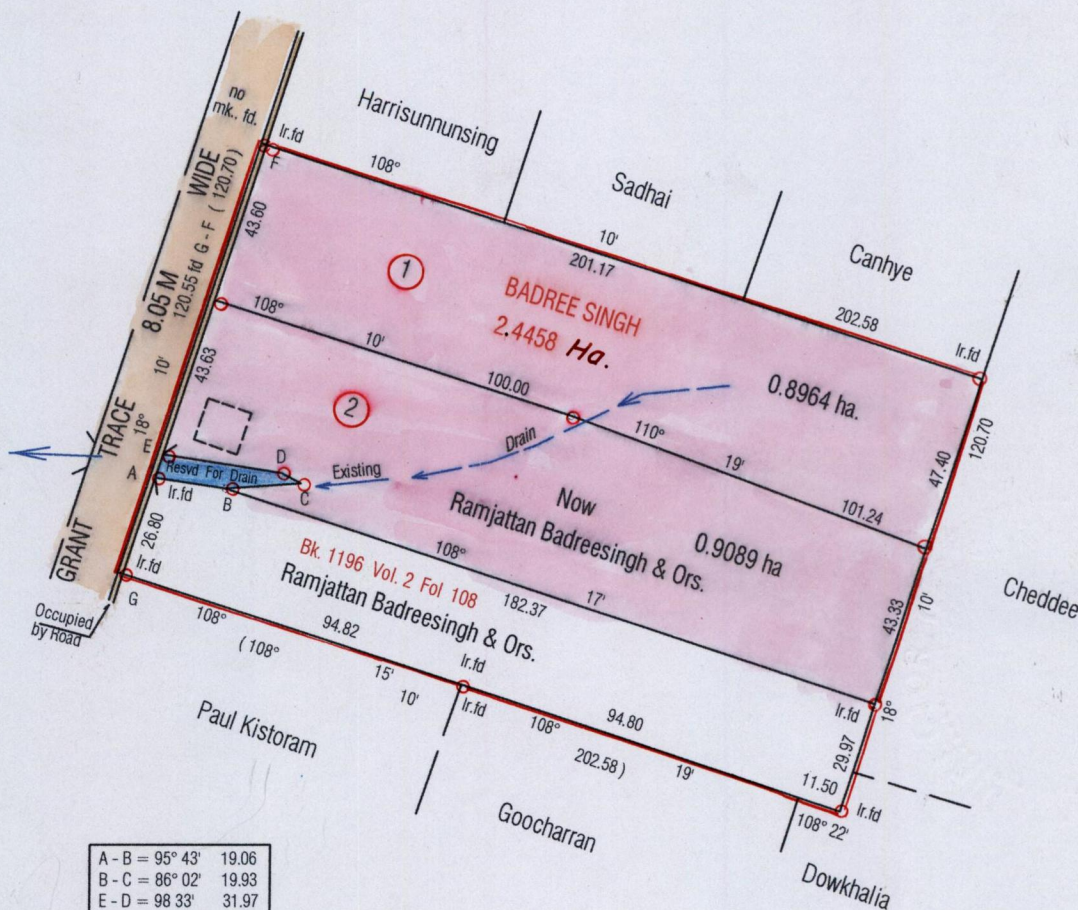
Fol. 73

Ward of La Brea  
County of St. Patrick  
Cadastral Sheet G 6 N

62 C  
3/d, 4/c



Bk. 456 Fol 93



Approved *[Signature]*  
Director of Surveys  
2006.5.18

○ Denotes Iron put except otherwise stated  
SCALE : 1 / 2000

Bearings are Cassini Grid based on Solar Obs  
Note: To obtain compass bearings add/subtract minutes Distances are in metres

PLAN of 2 Parcels of land coloured pink in the Ward of La Brea  
Containing together one point eight zero five three hectares  
Surveyed by me, with due authority, in January 2006  
In accordance with Regulation 25 (1) of the Land Surveyors' Regulations 1998,  
I certify that this plan is correct.

Checked by *[Signature]* 15/5/06  
Entered ..... Trinidad and Tobago Land Surveyor *[Signature]* 18<sup>th</sup> Jan 2006