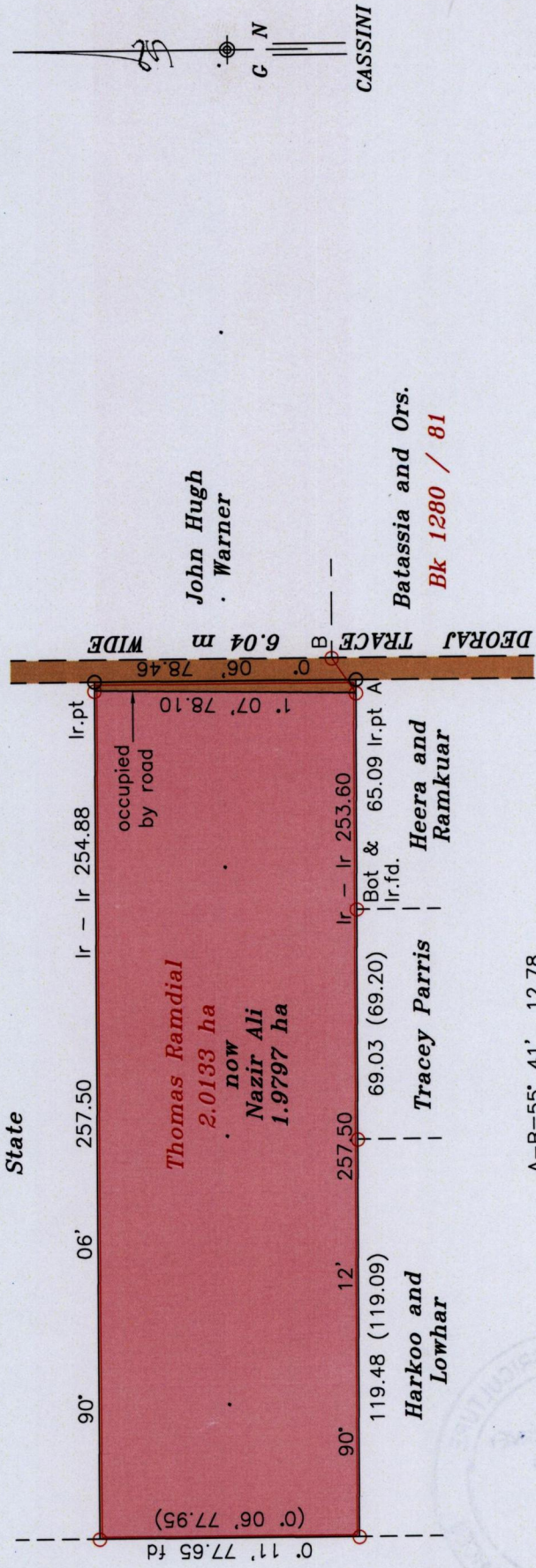


R.P.O Vol. 593 Fol. 265  
 C.T Vol. Fol.

Ward of Siparia  
 County of St. Patrick  
 Cadastral Sheet (G.17.L) 13B  
 3/d



F.A. Reveillac  
 now  
 Louis Cohon

A-B=55° 41' 12.78

Approved.....  
 Director of Surveys  
 2006.5.5

○ Denotes Iron found except otherwise stated  
 Note: Bearings are Cassini grid based on solar observations  
 Note: To obtain compass bearing subtract 06 minutes.

Plan of a Parcel of land coloured pink in the Ward of Siparia.

Containing one point nine seven nine seven hectares

Surveyed by me, with due authority, in June 2005

In accordance with Regulation 25(1) of the Land Surveyors' Regulations 1998,

I certify that this plan is correct.

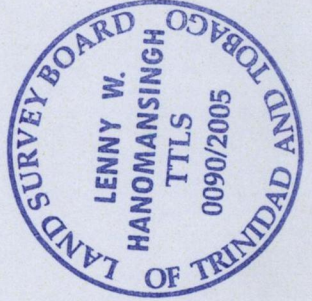
Checked by: *[Signature]*

Entered .....

Trinidad & Tobago Land Surveyor *[Signature]* 6/12/2005

SCALE 1:2000

Distances are in metres.



135135336

276