

R.P.O. Vol.

Fol.

Cadastral Sheet D.22.P. 53C
1/b

C.T. Vol. 3238

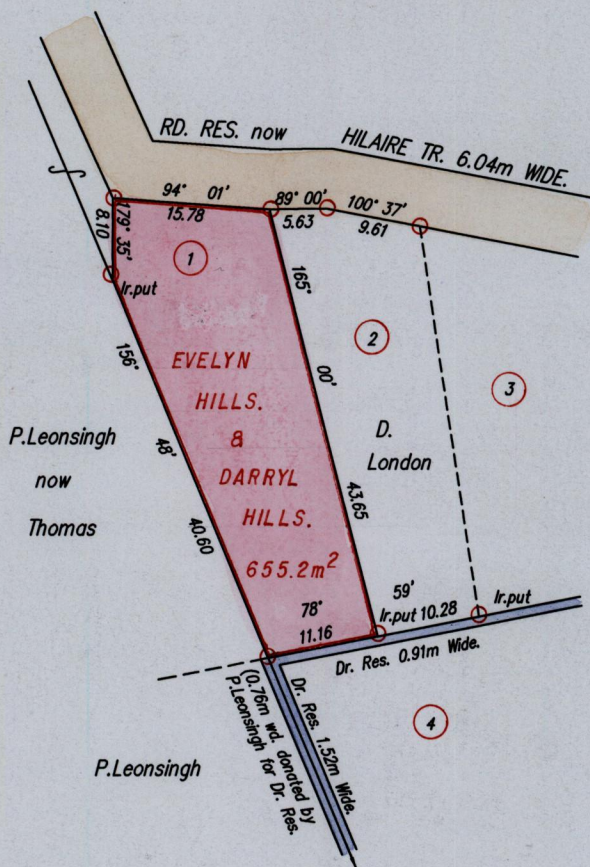
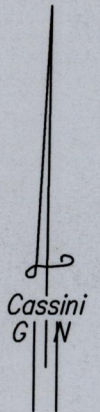
Fol. 357

Ward of Pointe - a - Pierre.

County of Victoria

Bk. 1175 fol. 121

1358/27



Approved

[Signature]
Director of Surveys
2005. 8. 30

SCALE 1:750
Distances are in Metres

○ Denotes Iron found except otherwise stated.
Bearings are Cassini Grid based on Solar Observations.

PLAN of a Parcel of land coloured pink in the Ward of Pointe - a - Pierre.
Containing six hundred and fifty five point two square metres.

Redefined by me, with due authority, in August, 2004

In accordance with Regulation 25(1) of the Land Surveyors' Regulations 1998,
I certify that this plan is correct.

Checked by *[Signature]* 1/3/05

Entered Trinidad & Tobago Land Surveyor *[Signature]* 2005

