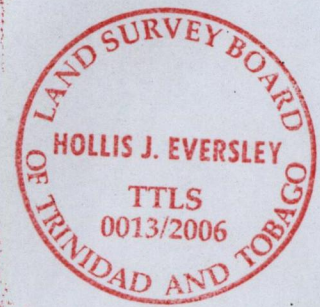
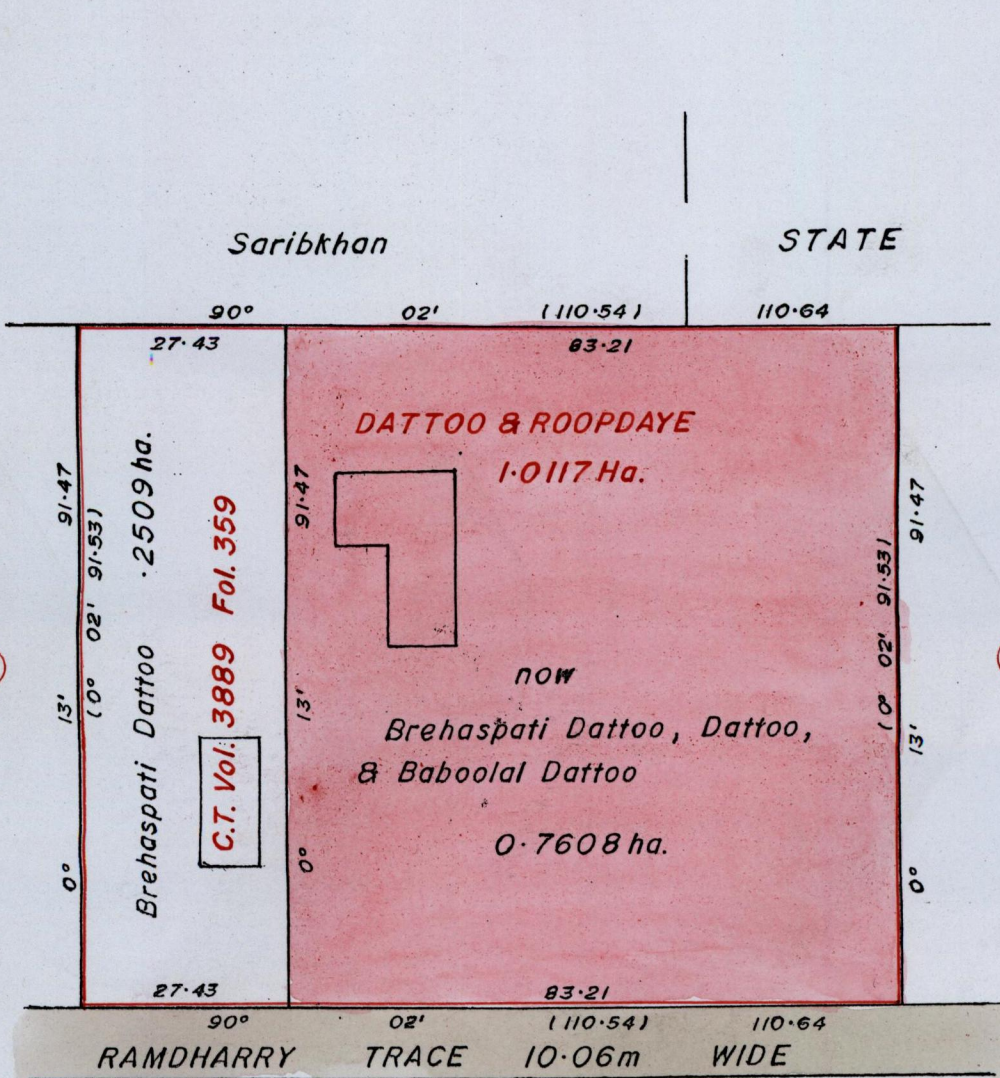


1353-68 263

REMAINING PORTION

R.P.O Vol. 214 Fol. 221
C.T. Vol. 1775 Fol. 161

Ward of Siparia.
County of St. Patrick.
Cadastral Sheet G.13.K. 63F
3/b



Bk. 999 : 72
1233 : 214
SCALE 1 : 1000.
Distances are in METRES

Approved.....
Director of Surveys. 2006.4.27

This is a true copy of a diagram of one point zero one one seven hectare, Originally transferred to DATTOO & ROOPDAYE showing a portion, Coloured pink and containing zero point seven six zero eight hectare ,being the remainder, after one previous transfer of another portion of the land. In accordance with Reg. 25(1) of the Land Surveyors' Regulations 1998, I certify that this plan is correct.

Checked by
Entered

Trinidad and Tobago Land Surveyor..... 2006.