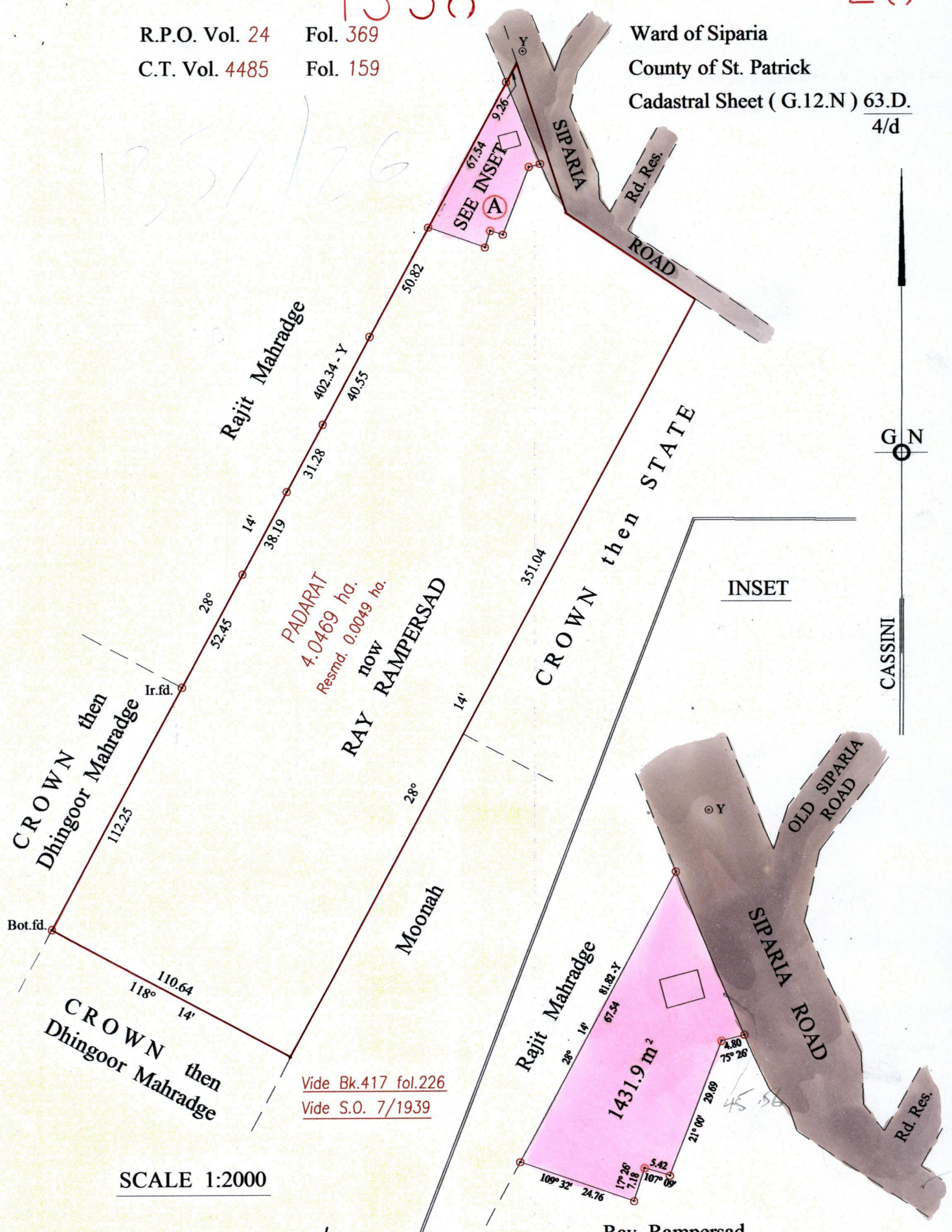


1358

26

R.P.O. Vol. 24 Fol. 369
C.T. Vol. 4485 Fol. 159

Ward of Siparia
County of St. Patrick
Cadastral Sheet (G.12.N) 63.D.
4/d



PADARAT
4.0469 ha.
Resmd. 0.0049 ha.
now
RAY RAMPERSAD

INSET

Vide Bk.417 fol.226
Vide S.O. 7/1939

SCALE 1:2000

Ray Rampersad

SEE BACK OF PLAN

Approved *[Signature]*
Director of Surveys
2005-8-30

SCALE 1:1000

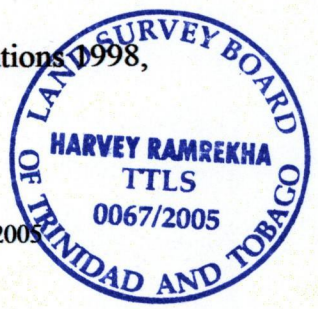
○ Denotes Iron put except stated otherwise.
Note: Bearings are cassini grid based on solar observations

Distances are in metres

PLAN of a Parcel of land coloured pink in the Ward of Siparia
Containing one thousand four hundred and thirty one point nine square metres
Surveyed by me, with due authority, on the 30th. June 2000.
In accordance with Regulation 25 (1) of the Land Surveyors' Regulations 1998,
I certify that this plan is correct.

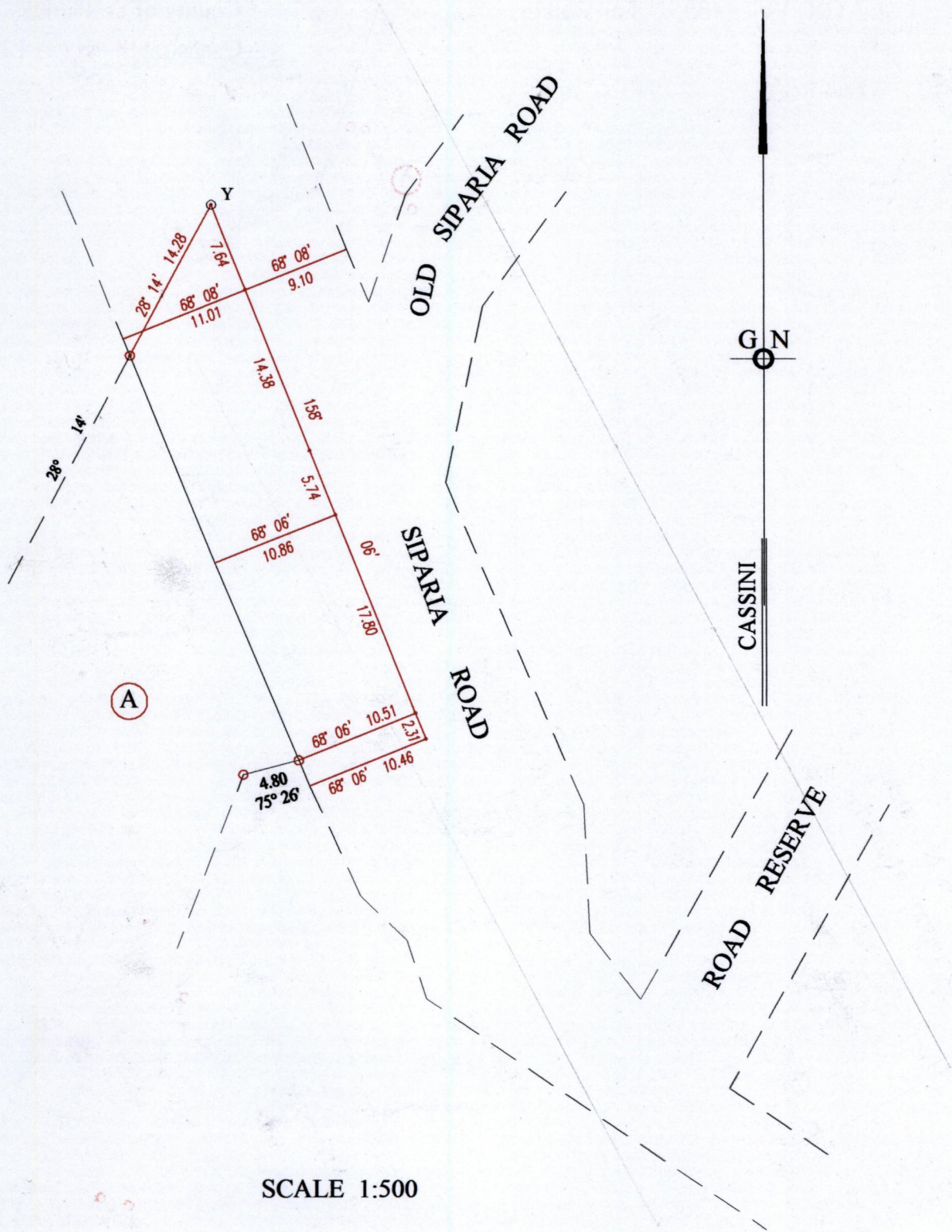
Checked by *[Signature]* *[Signature]*

Entered on Trinidad & Tobago Land Surveyor 17.05.2005



50

1328



1358/26