

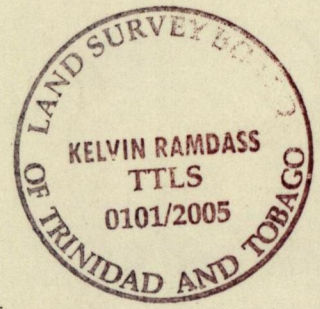
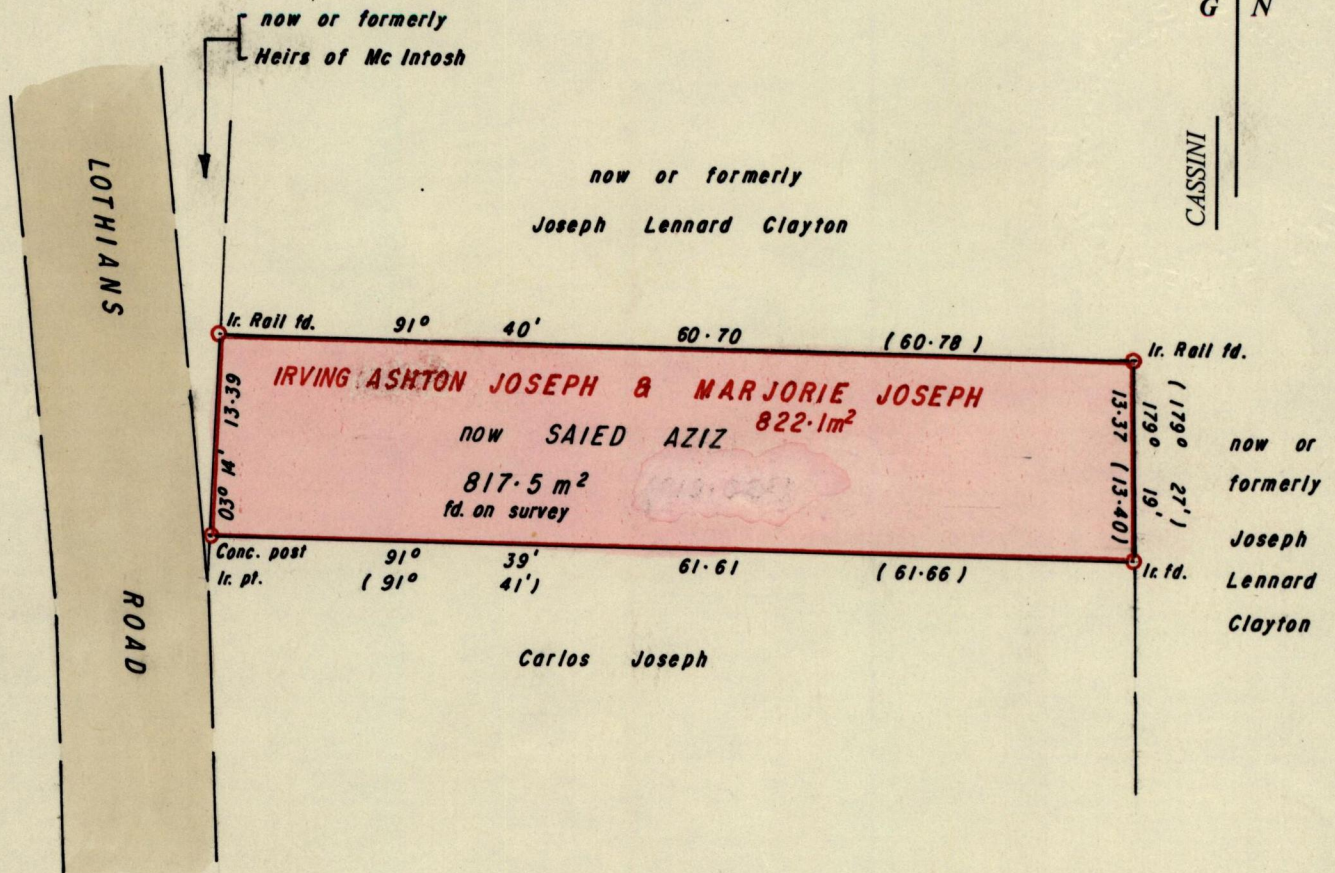
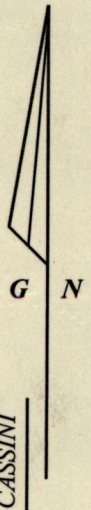
R.P.O. Vol. 4
C.T. Vol. 2055

Fol. 51
Fol. 61

Ward of Savana Grande
County of Victoria
Cadastral Sheet G.4.O., 54D
4/a/3

'PRINCES TOWN'

Ref. PLAN K.J. 4
Bk. 1163/174



Approved *[Signature]*
Director of Surveys
2005.4.7

○ Denotes Iron put unless otherwise stated
Bearings are Cassini Grid based on Solar Obs.
SCALE 1 / 500
Distances are in METRES

Note: To Obtain compass bearings add/subtract minutes

PLAN of a Parcel of land coloured PINK in the Ward of Savana Grande
Containing eight hundred and seventeen point five square metres
Surveyed by me, with due authority, in May 2005
In accordance with Regulation 25 (1) of the Land Surveyors' Regulations 1998,
I certify that this plan is correct.

Checked by *[Signature]* *[Signature]*
Entered Trinidad and Tobago Land Surveyor..... *[Signature]* 2005