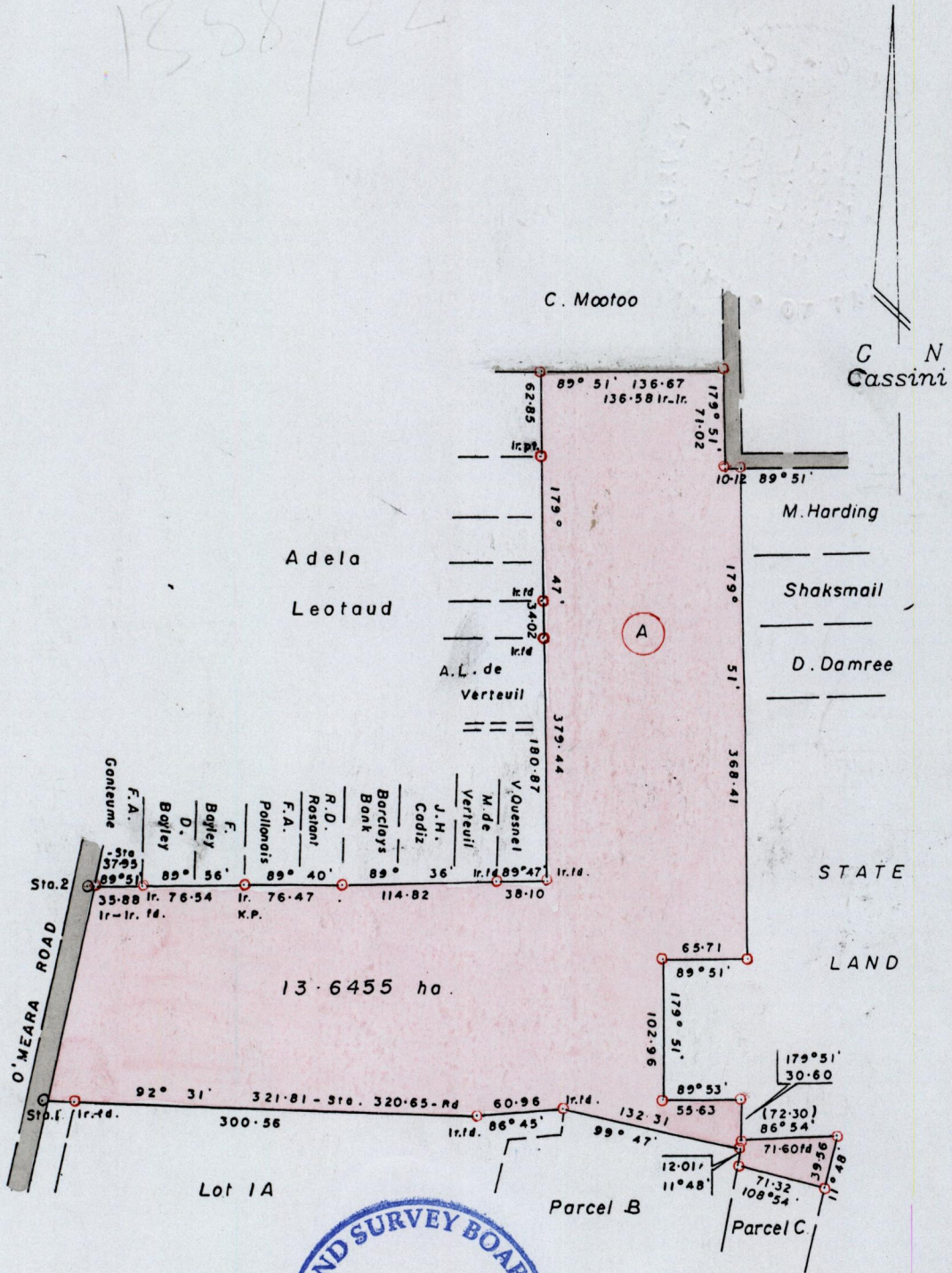
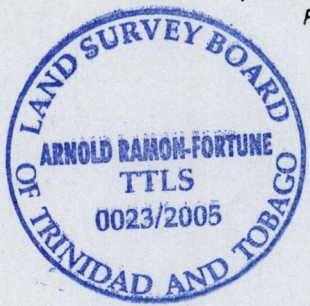


1358/22



Approved
[Signature]
 Director of Surveys
 2005.8.24



Sta. 1 - Sta. 2 = 11° 58' 161.88

Note: Iron put at each corner except otherwise indicated

Bearings are based on Solar Observations

Note: To obtain compass bearings minutes.

SCALE : 1 / 5000

Distances are in metres

PLAN of a Parcel of land coloured pink in the Ward of Arima
 Containing thirteen point six four five five hectares

Surveyed by me with due authority in September 1980 to be Acquired by the STATE
 In accordance with Regulation 25(1) of the Land Surveyors' Regulations 1998,
 I certify that this plan is correct.

Checked by *[Signature]* 22.8.05

[Signature]

Entered.....

Trinidad & Tobago Land Surveyor *[Signature]* 16 FEBRUARY 2005