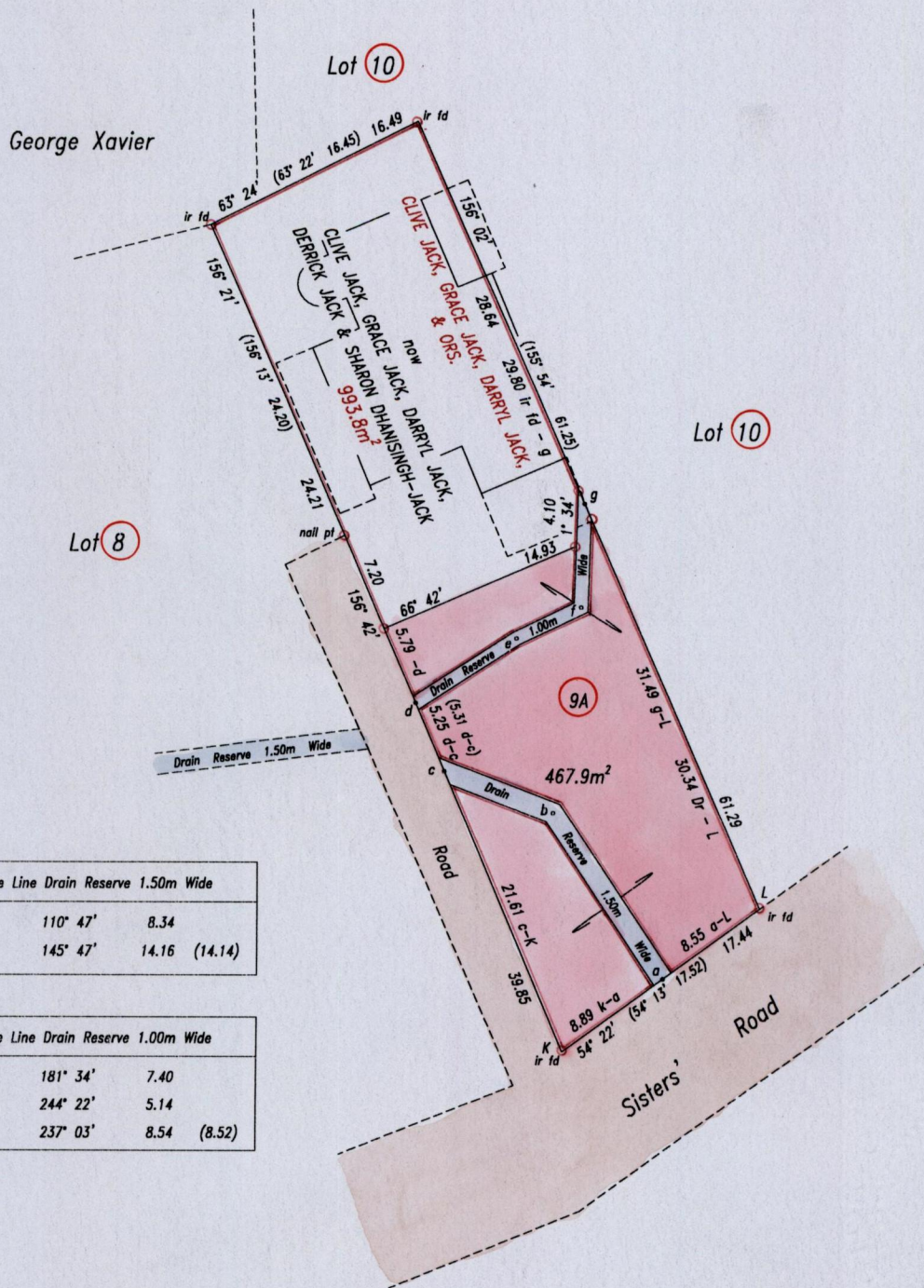


C.T. Vol. 3957 Fol. 361
C.T. Vol. 4339 Fol. 185
U.P.R.N. No.:

Ward of Savana Grande
County of Victoria
Cadastral Sheet D.23.L. 54B
3/a



Centre Line Drain Reserve 1.50m Wide		
c - b	110° 47'	8.34
b - a	145° 47'	14.16 (14.14)

Centre Line Drain Reserve 1.00m Wide		
g - f	181° 34'	7.40
f - e	244° 22'	5.14
e - d	237° 03'	8.54 (8.52)

Approved

[Signature]
Director of Surveys 2006.3.8

Reference: Plan J.C. 145

SCALE 1: 500

Distances are in metres

○ Denotes iron put except otherwise stated

Bearings are Cassini Grid based on Solar Observations

PLAN of a parcel of land coloured pink in the Ward of Savana Grande
Containing four hundred and sixty seven point nine square metres
Surveyed by me, with due authority, in January 2004

In accordance with Regulation 25(1) of the Land Surveyors' Regulations 1998, I certify that this plan is correct.

Checked by *mm 2/2/06*

Entered

[Signature]

Trinidad & Tobago Land Surveyor *7/6/2005*

