

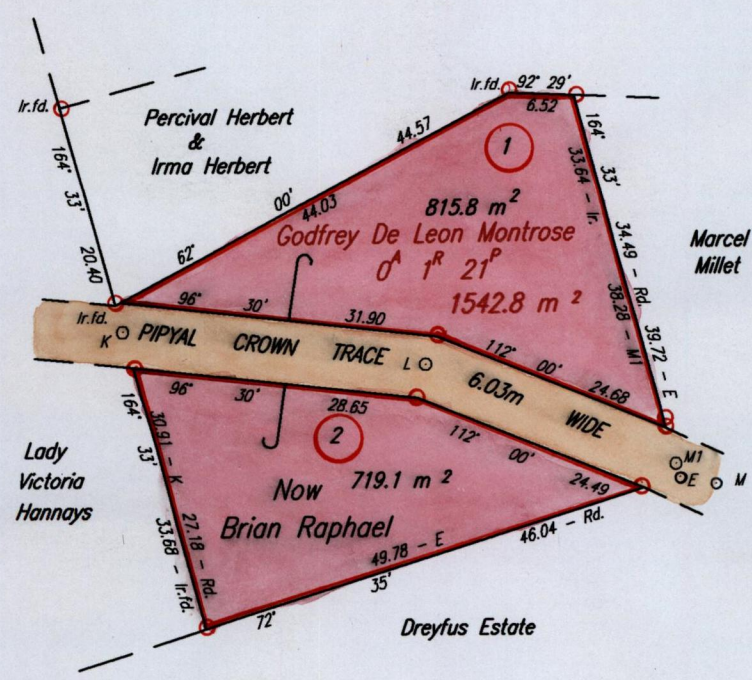
1358

1358/207

207

C.T. Vol. 4053 Fol. 343

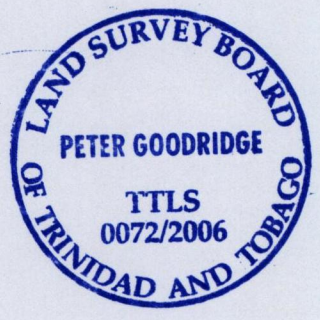
Cadastral Sheet B.12.I  
Ward of St. Anns  
County of St. George



L&S. Bk. 1049 Fol. 21

**LEGEND**

K - L	96° 30'	30.46
L - M1	112° 00'	27.06
L - M	112° 00'	31.21



Approved *[Signature]*  
9 Director of Surveys 2006.3.6

SCALE 1:750

Distances are in METRES

○ Denotes Iron put except where otherwise stated

Bearings are Cassini Grid based on Solar Observations

PLAN of 2 Parcels of land coloured pink in the Ward of St. Anns

Containing together one thousand five hundred and thirty four point nine square metres

Surveyed by me, with due authority, in August 2002

In accordance with Regulation 25 (1) of The Land Surveyors' Regulations 1998,

I certify that this plan is correct.

Checked by *[Signature]* 2/6/08

Entered on .....

*[Signature]*  
Trinidad & Tobago Land Surveyor  
20 February 2008  
C:\LESS2008\TRINIDAD\BRIAN RAPHAEL\PIPYAL CROWN TRACE.dwg FILE NO:R032