

1358/198

198

R.P.O Vol. 90
C.T.Vol. 1320

FoL 231
FoL 61

REMAINING PORTION

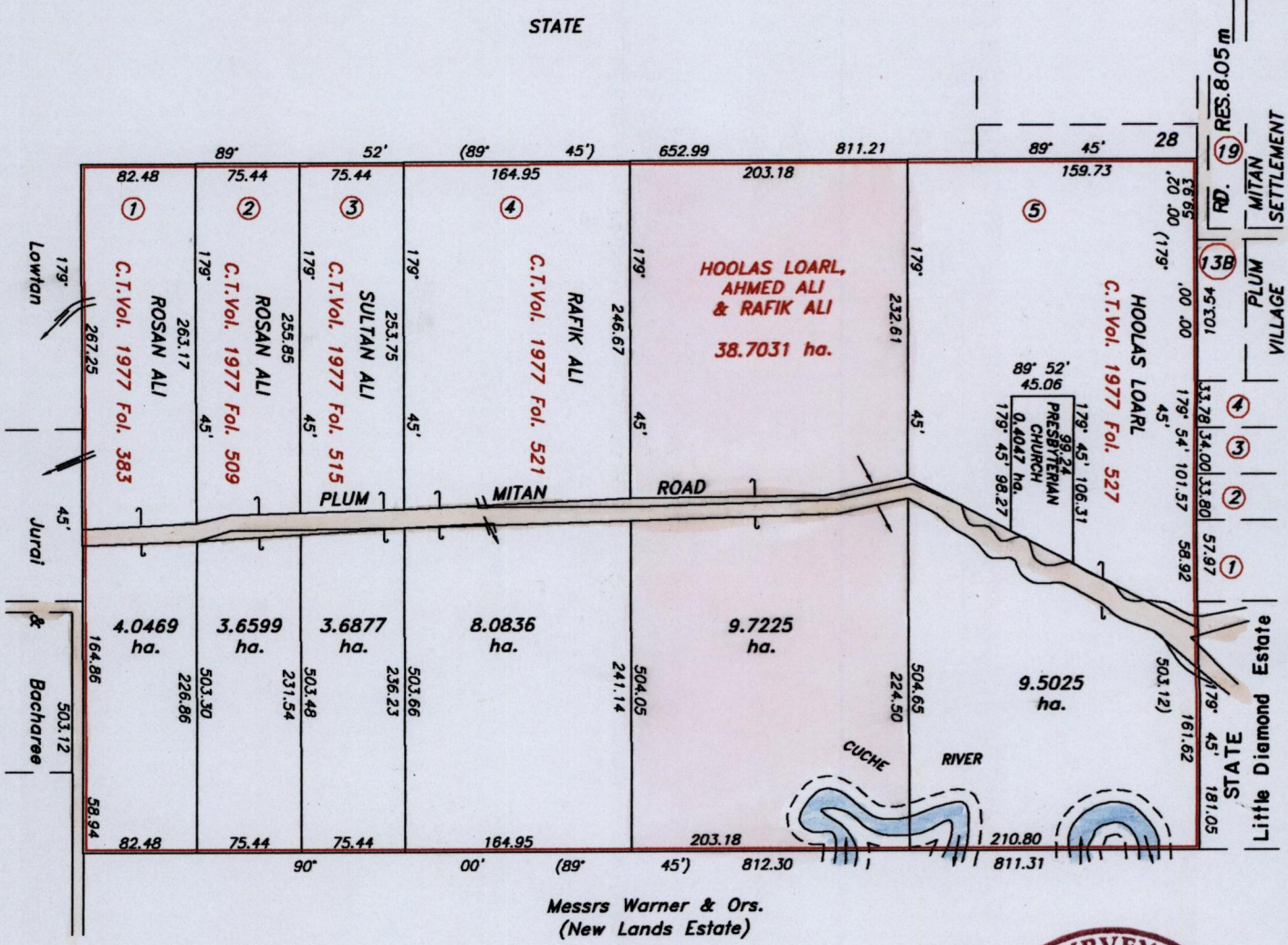
Ward of Turure
County of St. Andrew
Cadastral Sheet E.12.F.&G.

U.P.F.N. No.

35.F.
4/c&d

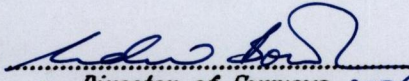
C N
(CASSINI)

RES. 8.05 m



Vide Plan E.C.180

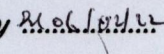
SCALE 1/5000

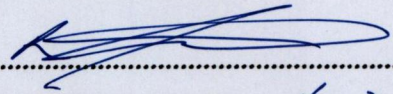
Approved 
Director of Surveys 2006.2.23

Note: Bearings are Cassinin Grid based on Solar Observation Distances are in metres

This is a true copy of a diagram of thirty eight point seven zero three one hectares originally, transferred to Hoolas Loarl, Ahmed Ali, & Rafik Ali shewing a portion coloured pink and containing nine point seven two two five hectares being the remainder after (5) five previous transfers of other portions of land.

In accordance with Regulation 25 (1) of the Land Surveyors' Regulations 1998, I certify that this plan is correct.

Checked by 
Entered


Trinidad & Tobago Land Surveyor. 16.12.2005