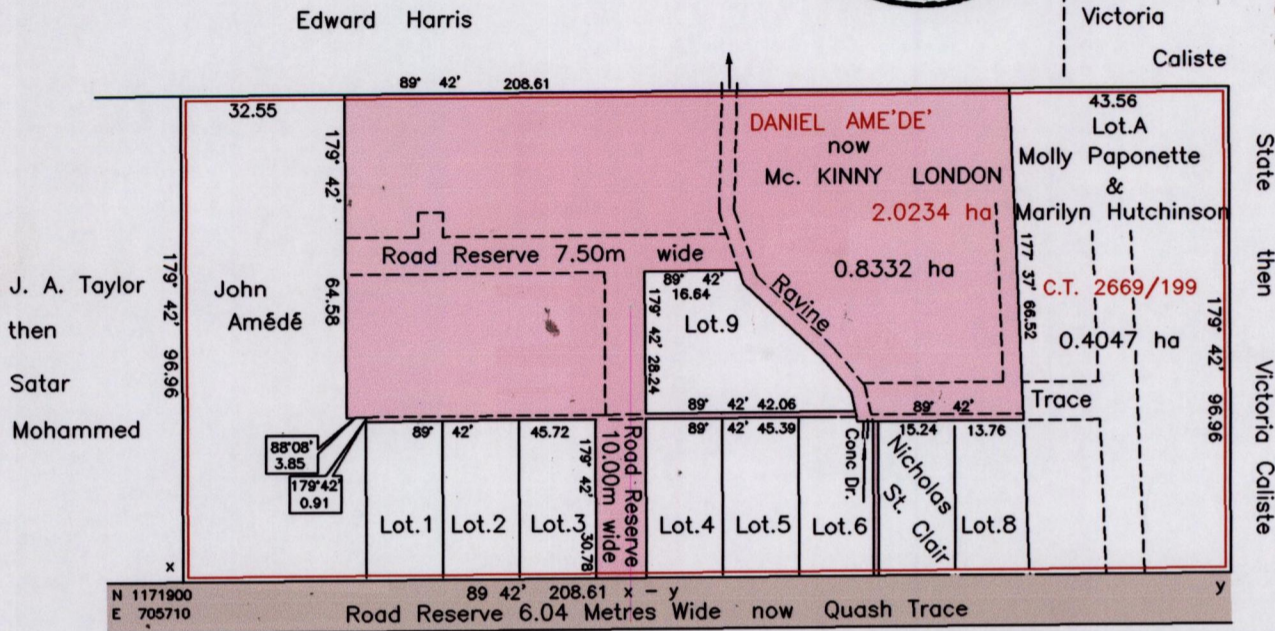




State then  
Victoria  
Caliste

G N  
cassini



Parcel	Name	Area	C.T.
Lot. 1	Stephen Patrick	468.7m <sup>2</sup>	2669/207
Lot. 2	Brenda Sylvester Charles Leroy Charles	467.8m <sup>2</sup>	2888/199
Lot. 3	Shaffiat Hosein & Rabeyoon Hosein	467.8m <sup>2</sup>	2945/249
Lot. 4	Lystra Sylvester	471.9m <sup>2</sup>	3196/117
Lot. 5	Cecil Sampson	473.3m <sup>2</sup>	3097/389
Lot. 6	Hollis St. Clair Nicholas St. Clair	465.0m <sup>2</sup> 464.5m <sup>2</sup>	3531/269 2412/293
Lot. 8	Abraham Joseph	436.5m <sup>2</sup>	4193/9
Lot. 9	Allister London & Seretsee John Amédé,	887.9m <sup>2</sup> 3251.21m <sup>2</sup>	4577/171 3154/125

Approved  
*[Signature]*  
Director of Surveys 2006-2-21

UTM. Co-ordinates are approx. scaled from 1/10,000 sheet  
Bearings are Cassini grid based on Magnetic Needle  
Note: To obtain compass bearings add 18 minutes.

SCALE 1/1500

Distances are in metres

This is a true copy of a diagram of two point zero two three four hectares originally granted to Daniel Amédé, shewing a portion coloured pink and containing zero point eight three three two hectares being the remainder after 11 previous transfers of another portions of the land. In accordance with Regulation 25 (1) of the Land Surveyors' Regulations 1998, I certify that this plan is correct.

Checked by *[Signature]*  
Entered..... Trinidad & Tobago Land Surveyor 14<sup>th</sup> February 2008