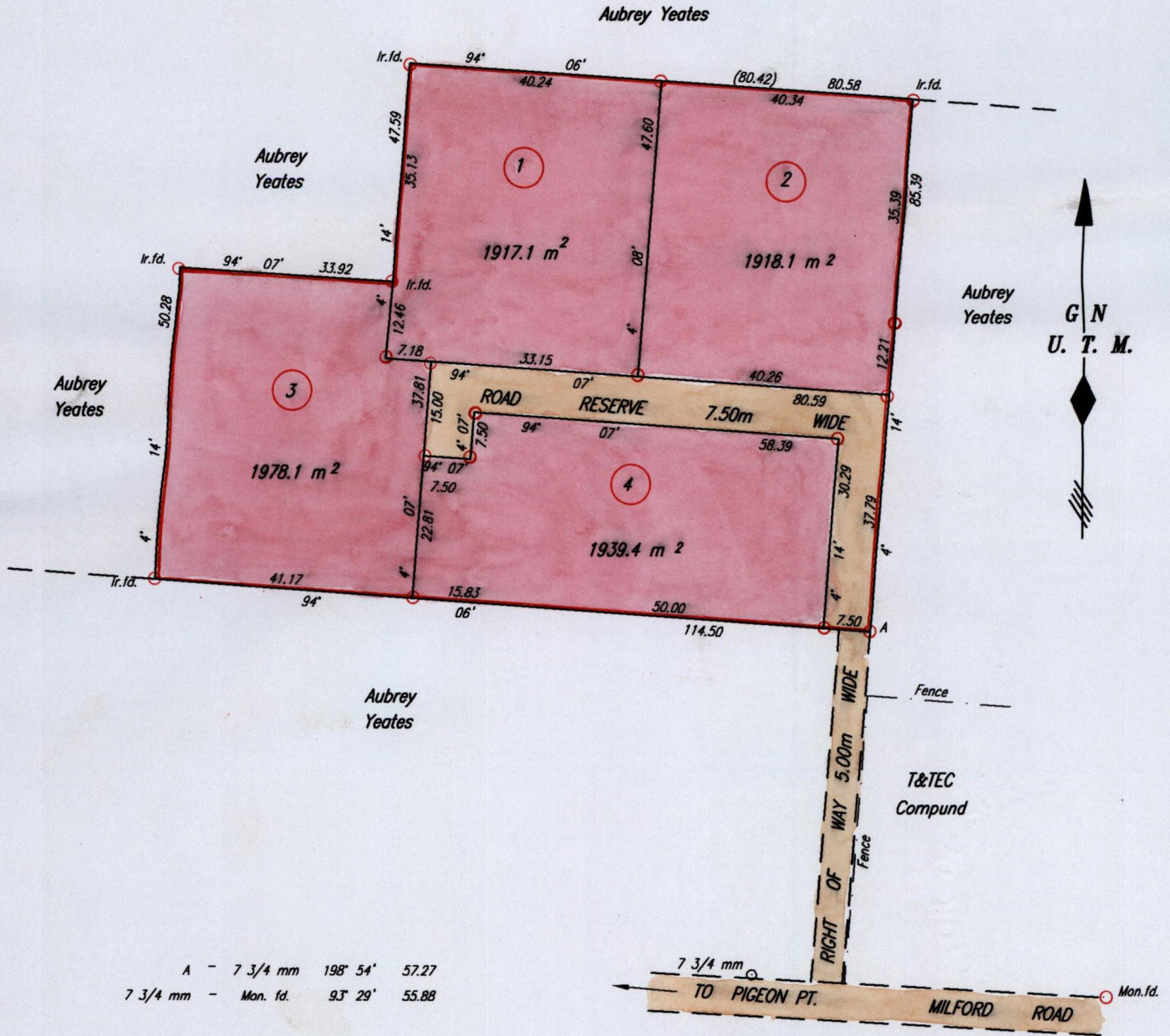


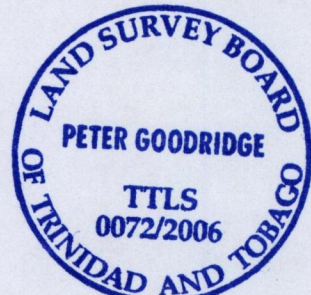
13584

134

See Bk. 1159 Fol. 14



A - 7 3/4 mm 198° 54' 57.27
 7 3/4 mm - Mon. fd. 93° 29' 55.88



Approved *[Signature]*
 Director of Surveys 2006-2-14

SCALE 1:1000
 Distances are in METRES

○ Denotes Iron put except where otherwise stated
 Bearings are U.T.M. Grid based on Solar Observations

PLAN of 4 Parcels of land coloured pink in the Ward of Tobago
 Containing together seven thousand seven hundred and fifty two point seven square metres
 Surveyed by me, with due authority, in December 2003

In accordance with Regulation 25 (1) of The Land Surveyors' Regulations 1998,
 I certify that this plan is correct.

Checked by *[Signature]* 2006-2-14

Entered on
 Trinidad & Tobago Land Surveyor *[Signature]* 2006
 C:\LESS 2006\TOBAGO\REECE, IRMA LINDSAY\016.dwg FILE NO. T012