

1358

182

R.P.O. Vol. 77 Fol. 387

C.T. Vol. 2359 Fol. 149

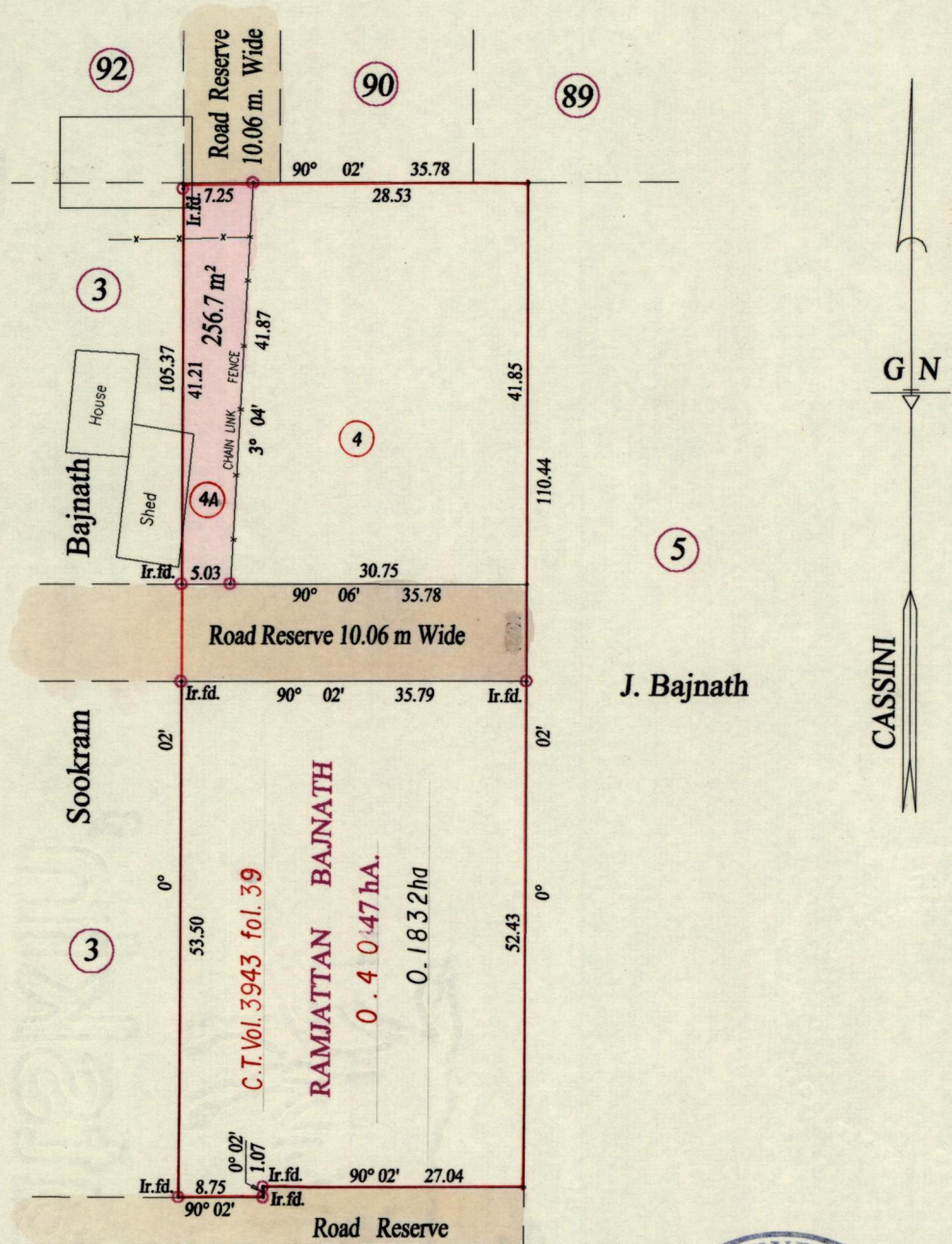
Ward of Siparia

County of St. Patrick

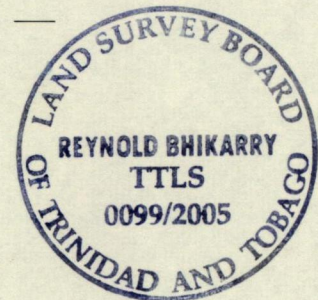
Cadastral Sheet (G.13.J) 63.B.

NB: (4A) to be amalgamated to (3)

3/a



Vide Bk.1238 fol.110



Approved *[Signature]*  
 Director of Surveys 2006.2.14

o Denotes Iron put except stated otherwise.

SCALE : 1:750

Note: Bearings are cassini grid based on solar observations

Distances are in metres

PLAN of a Parcel of land coloured pink in the Ward of Siparia  
 Containing two hundred and fifty six point seven square metres  
 Surveyed by me, with due authority, in May 2002

In accordance with Regulation 25 (1) of the Land Surveyors' Regulations 1998,  
 I certify that this plan is correct.

Checked by *[Signature]* 13/1/05 *[Signature]*

Entered on ..... Trinidad & Tobago Land Surveyor *[Signature]* 5th January 2005