

1358168

168

R.P.O. Vol. 148

Fol. 593

C.T. Vol. 2666

Fol 437

U.P.R.N No.

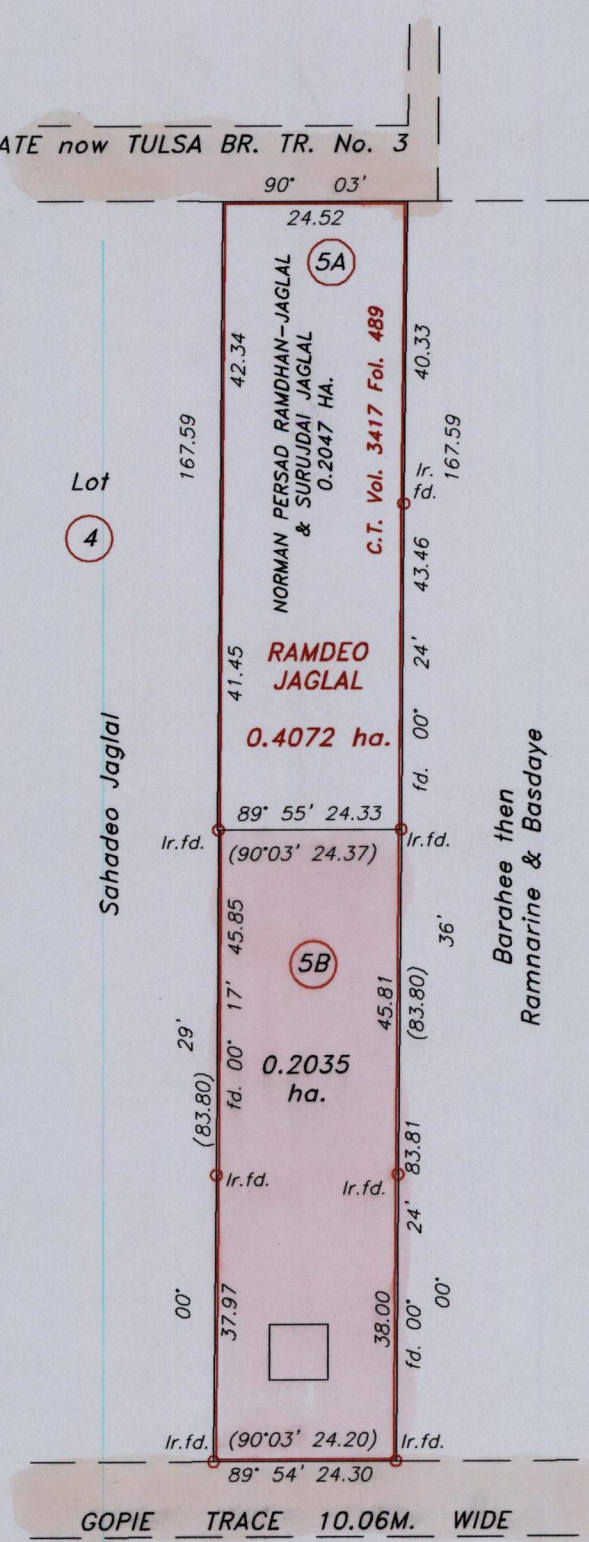
Ward of Siparia

County of St. Patrick

Cadastral Sheet G.13.E.

63.E.
2/c

STATE now TULSA BR. TR. No. 3



Approved

[Signature]
 Director of Surveys 2006-2-3

Bk. 1197 Fol. 56

SCALE 1/1000

Distances are in metres

◦ Denotes Iron put except stated otherwise
 Bearings are Cassini Grid based on Solar Observations
 Plan of a Parcel of land coloured pink in the **Ward of Siparia**
 Containing **zero point two zero three five hectare**

Surveyed by me, with due authority, in **February 2005**
 In accordance with Regulation 25 (1) of the Land Surveyors' Regulations 1998,
 I certify that this plan is correct.

Checked by *[Signature]* 01/02/06

Entered on.....

[Signature]
 Trinidad & Tobago Land Surveyor. 20 Jan. 2006