

1358/154

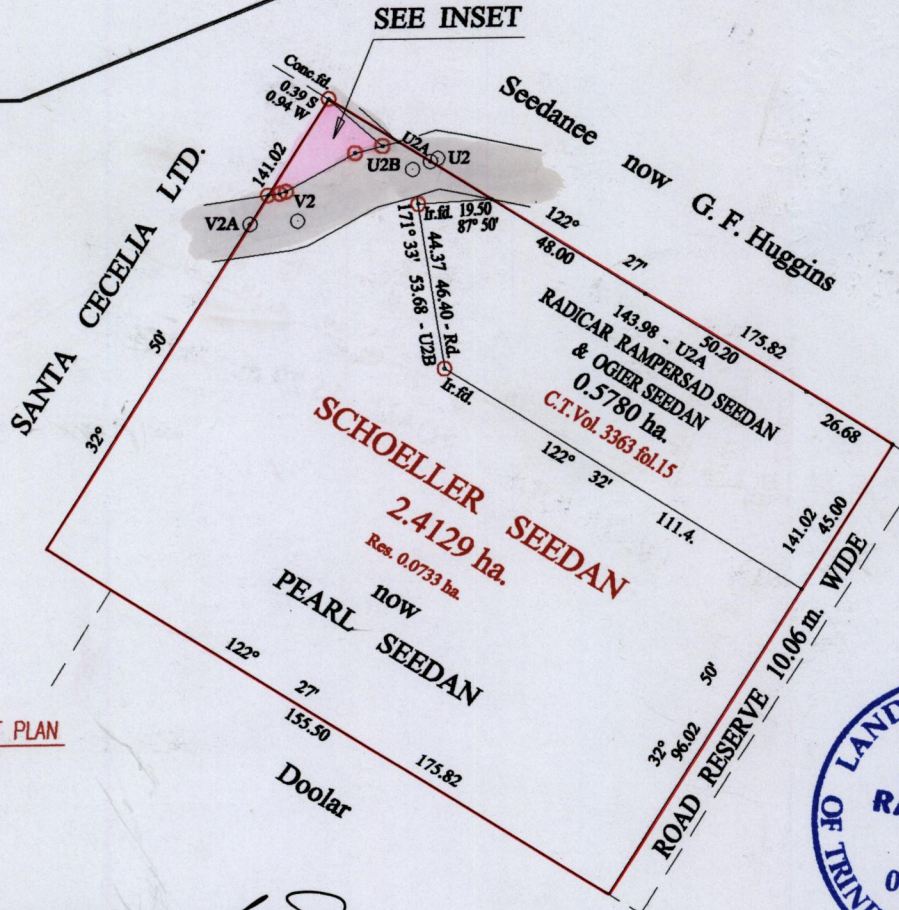
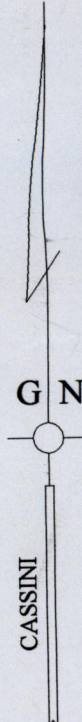
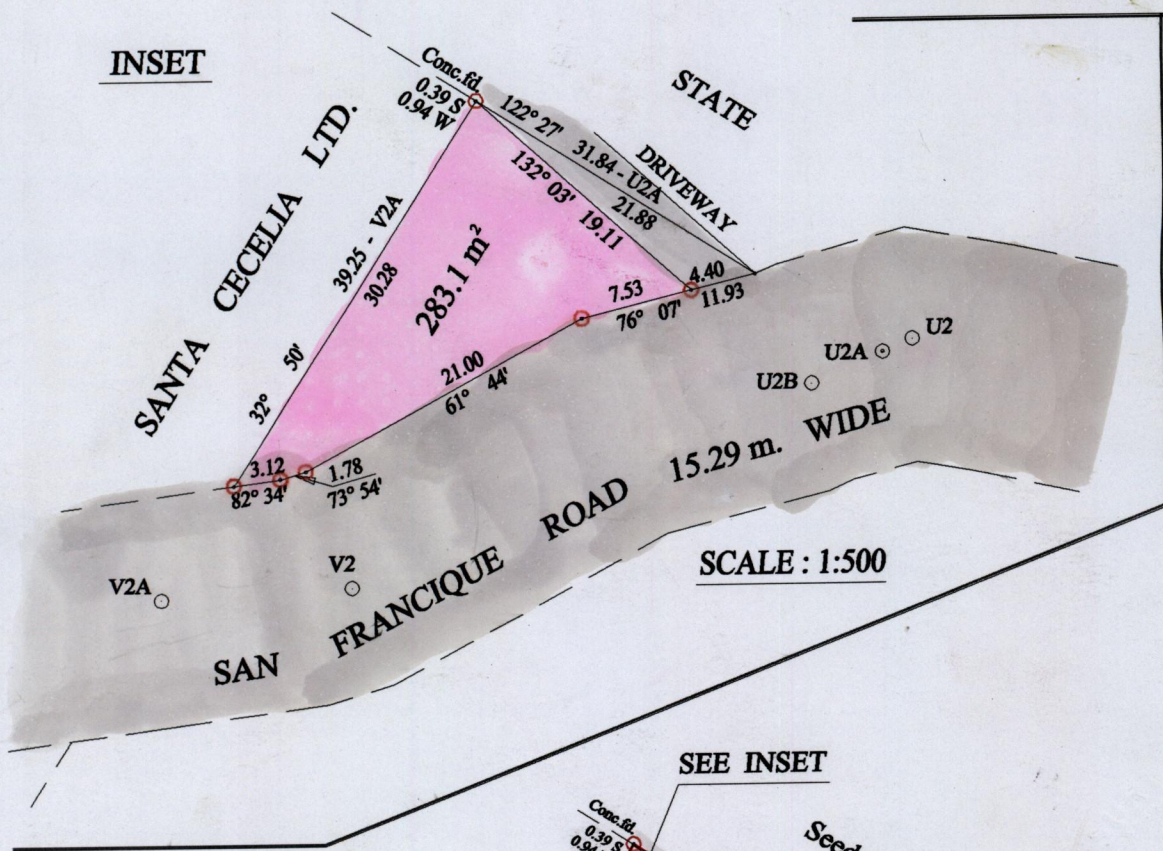
154

R.P.O. Vol. 81 Fol. 137  
C.T. Vol. 1859 Fol. 213

Ward of Siparia  
County of St. Patrick  
Cadastral Sheet (G.12.G) 63.E.

1/c

INSET



SEE BACK OF PLAN



Approved *[Signature]*  
Director of Surveys 2006.1.29

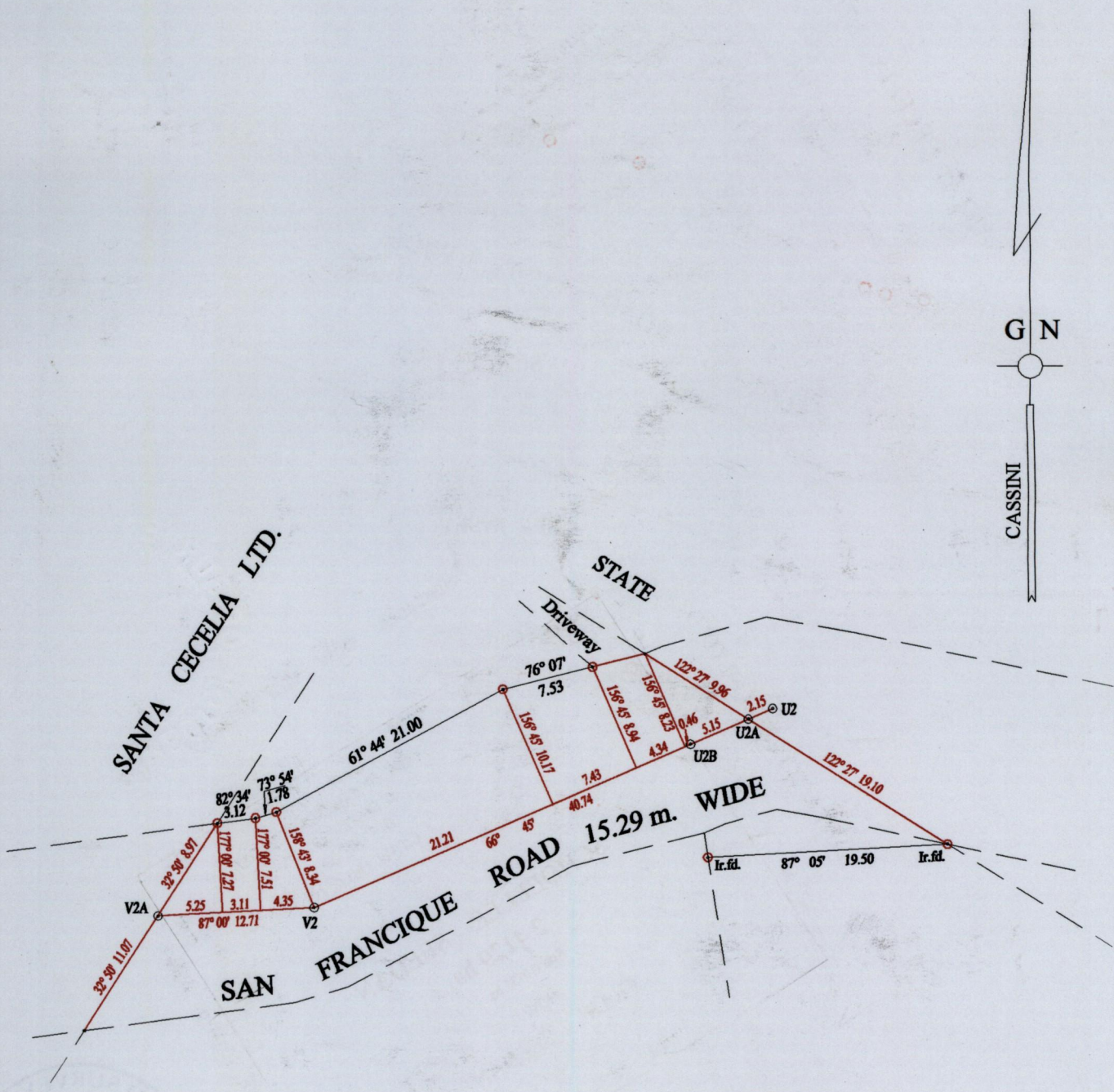
Vide Bk.1053 Vol.2 fol.747  
Vide Bk.465 fol.73

○ Denotes Iron put except stated otherwise.  
 Note: Bearings are cassini grid based on solar observations  
 PLAN of a Parcel of land coloured pink in the Ward of Siparia  
 Containing two hundred and eighty three point one square metres  
 Surveyed by me, with due authority, in October 2003  
 In accordance with Regulation 25 (1) of the Land Surveyors' Regulations 1998,  
 I certify that this plan is correct.

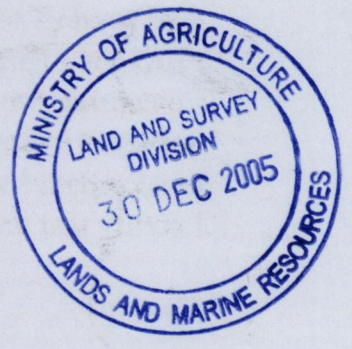
Checked by *[Signature]* 3/1/06

Entered on ..... Trinidad & Tobago Land Surveyor ..... 29.11.2005

1358



SCALE : 1:500



1358/154