

1358

1358/141

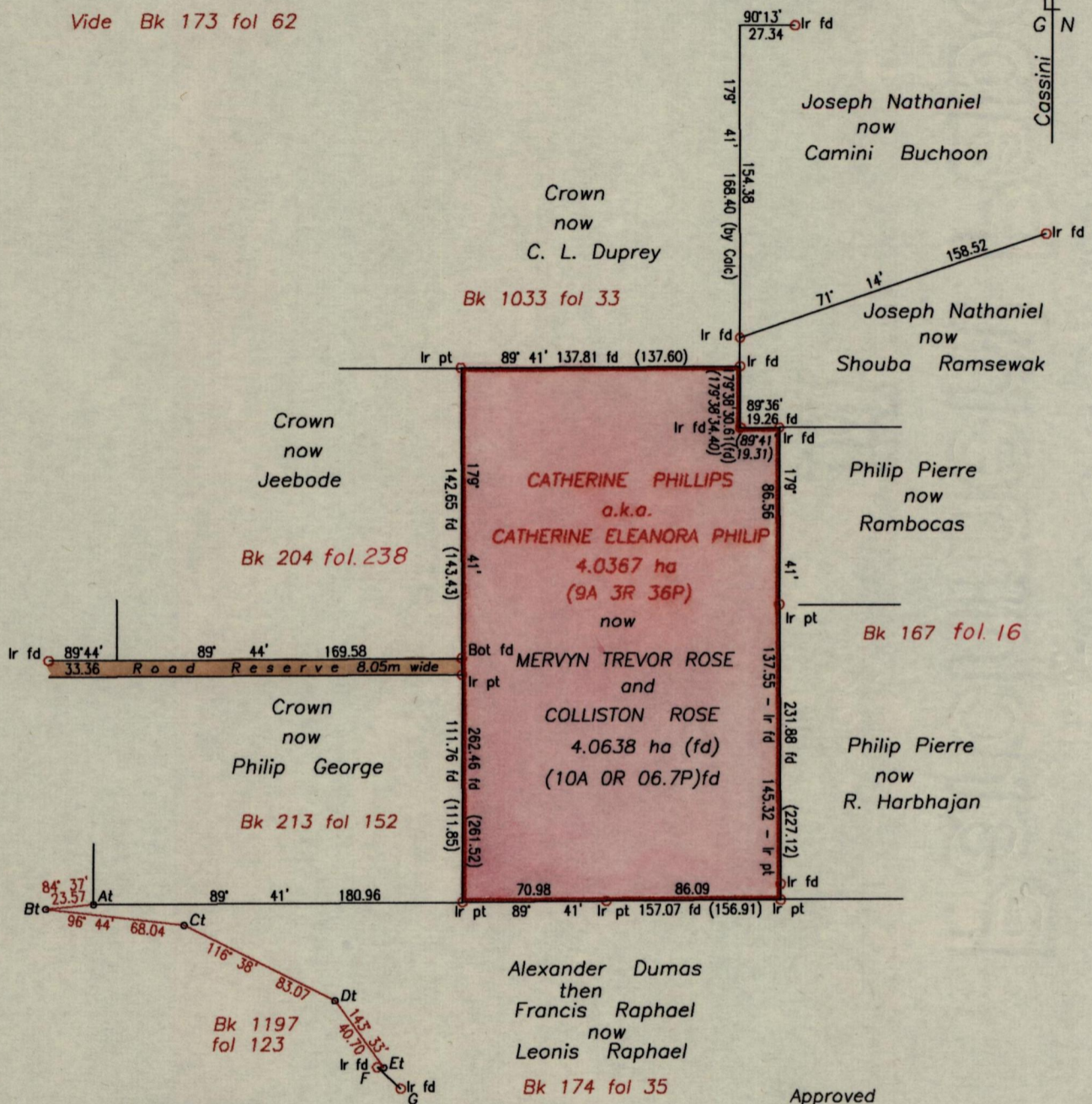
141

Cadastral Sheet C.22.K. 25F
Ward of Manzanilla 2/a&2/b
County of St. Andrew

R.P.O. Vol. 51 Fol. 637
C.T. Vol. 1359 Fol. 89

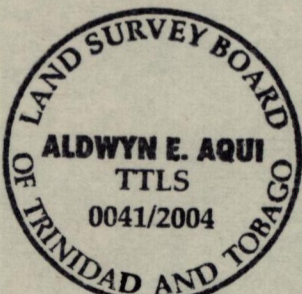
QUASH TRACE EXT.
SANGRE GRANDE

Vide Bk 173 fol 62



TRAVERSE NOTES
See Plan by G. Ramcharitar

At - Bt	264° 37'	23.57
Bt - Ct	96° 44'	68.04
Ct - Dt	116° 38'	83.07
Dt - Et	143° 33'	40.70
Et - F	274° 27'	3.19
F - G	132° 25'	15.52



Approved
[Signature]
Director of Surveys 2006.1.23

SCALE ~ 1 : 2500
Distances are in metres.

Note: Bearings are based on solar observations
To obtain compass bearings add 19 minutes

Plan of a parcel of land coloured pink in the Ward of Manzanilla containing four point zero six three eight hectares.
Re-defined by me, with due authority, in February - March 2003 for Mervyn Rose
In accordance with Regulation 25(1) of the Land Surveyors' Regulations 1998,
I certify that this plan is correct.

Checked by *[Signature]* 23/9/04
Entered on

[Signature] T.T.L.S.
Trinidad & Tobago Land Surveyor 24.03.2003