

U.P.R.N.....

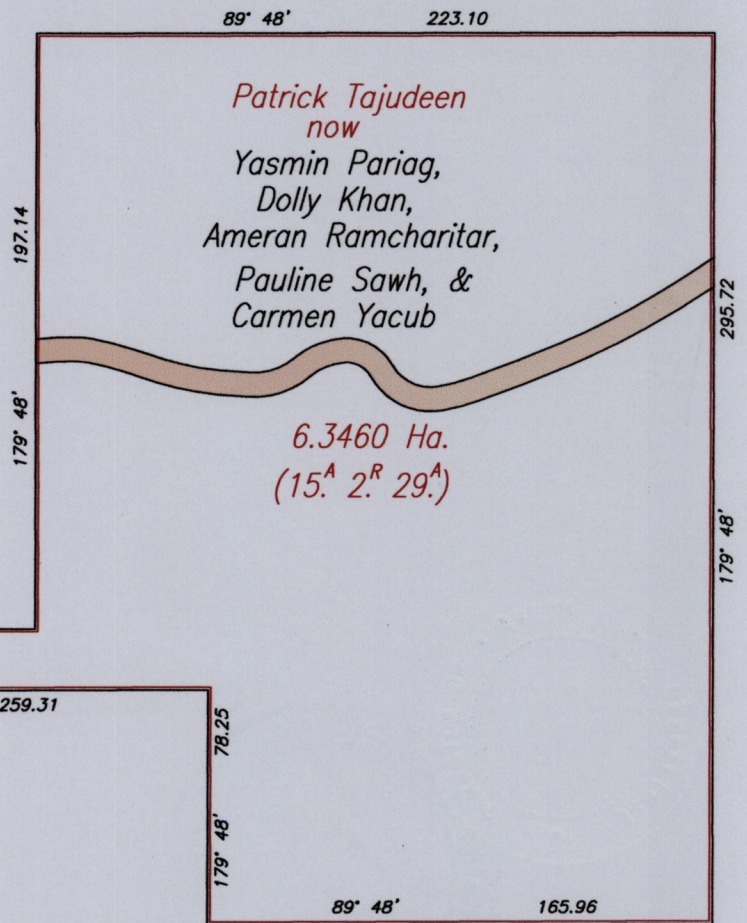
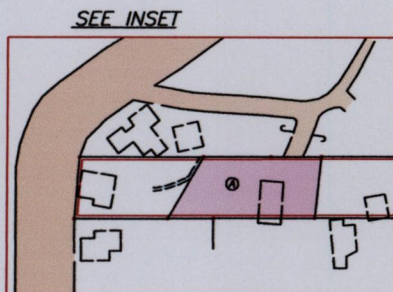
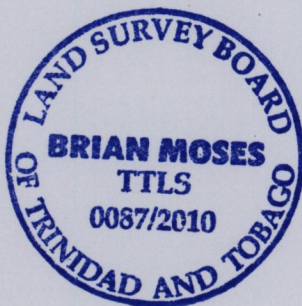
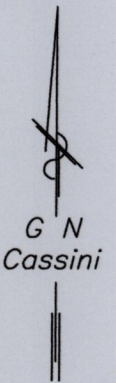
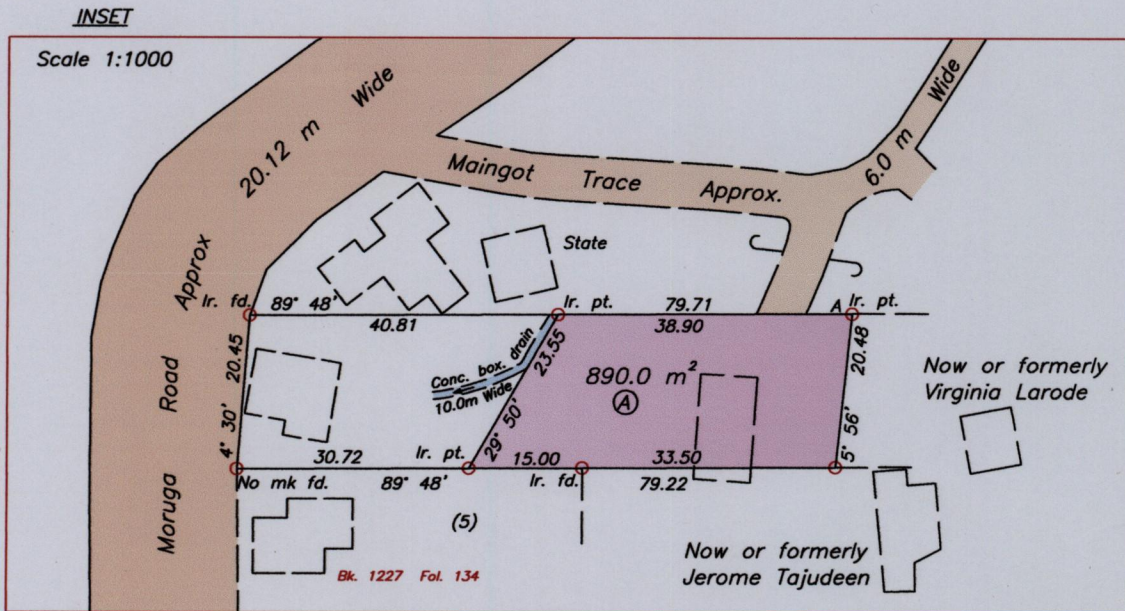
Cadastral Sheet G.20.H <sup>70C</sup>/<sub>1/d</sub>

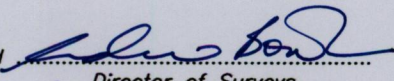
R.P.O. Vol. 51 Fol. 471

Ward of Moruga

C.T. Vol. 3025 Fol. 119

County of Victoria



Approved   
9 Director of Surveys  
2010.8.5

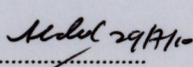
A - N 1120300  
E 686623  
Derived From Hand-Held GPS (+/-5 m)  
UTM Zone 20 Naparima Co-ordinates

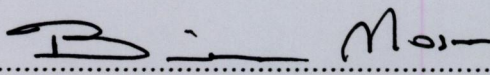
SCALE 1:2500  
Distances are in METRES

- Denotes Iron put unless otherwise stated
- Bearings are Cassini Grid based on Solar observations

PLAN of a Parcel of land coloured pink in the Ward of Moruga  
Containing eight hundred and ninety point zero square metres  
Surveyed by me, with due authority, in June 2004

In accordance with Regulation 25 (1) of the Land Surveyors' Regulations 1998,  
I certify that this Plan is correct.

Checked by 

 T.T.L.S.

Entered on .....

Trinidad & Tobago Land Surveyor 21<sup>st</sup> July 2010