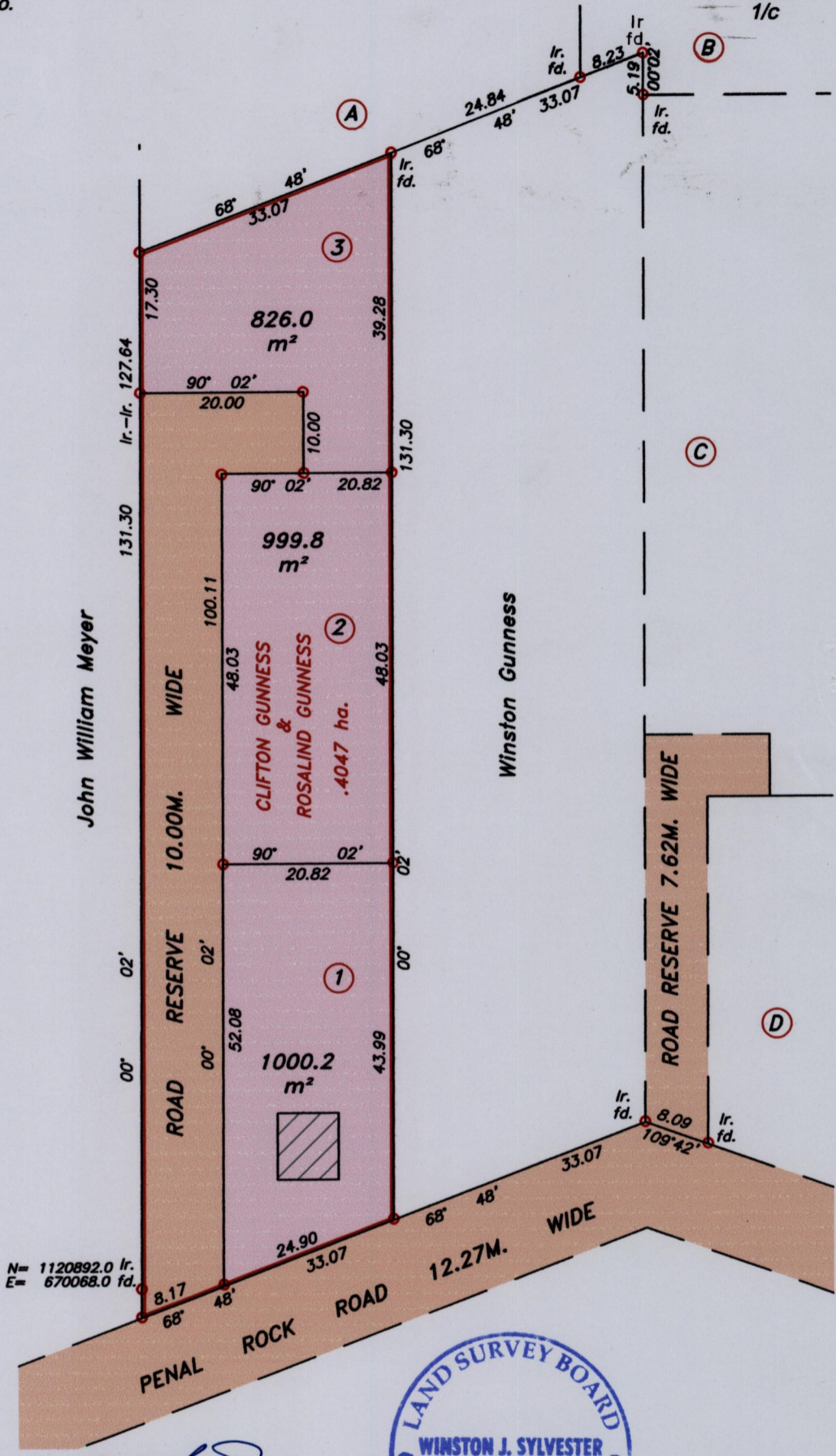


1336 335/94

94

R.P.O. Vol 104 Fol 561  
C.T. Vol 2632 Fol 343  
U.P.R.N No.

Ward of Siparia  
County of St. Patrick  
Cadastral Sheet G.18. B. & F.  
73.C.  
1/c



N= 1120892.0 lr.  
E= 670068.0 fd.



Approved *[Signature]*  
Director of Surveys  
20.10.08.5

Plan C.B.79  
Bk.935 Fol. 97  
Bk.1124 Fol. 134

Coordinates are obtained by hand held G.P.S.  
W.G.S. 84 Zone 20 (±) 5m.  
○ Denotes Iron put except stated otherwise.

SCALE 1/1500

Bearings are Cassini Grid based on Solar Observations

Distances are in metres

Plan of 3 Parcels of land coloured pink in the Ward of Siparia  
Containing together two thousand eight hundred and twenty six point zero square metres

Surveyed by me, with due authority, in May 2008

In accordance with Regulation 25 (1) of the Land Surveyors' Regulations 1998,  
I certify that this plan is correct.

Checked by *[Signature]* 29/7/10

*[Signature]*

Entered by .....

Trinidad & Tobago Land Surveyor.....27-10-2009