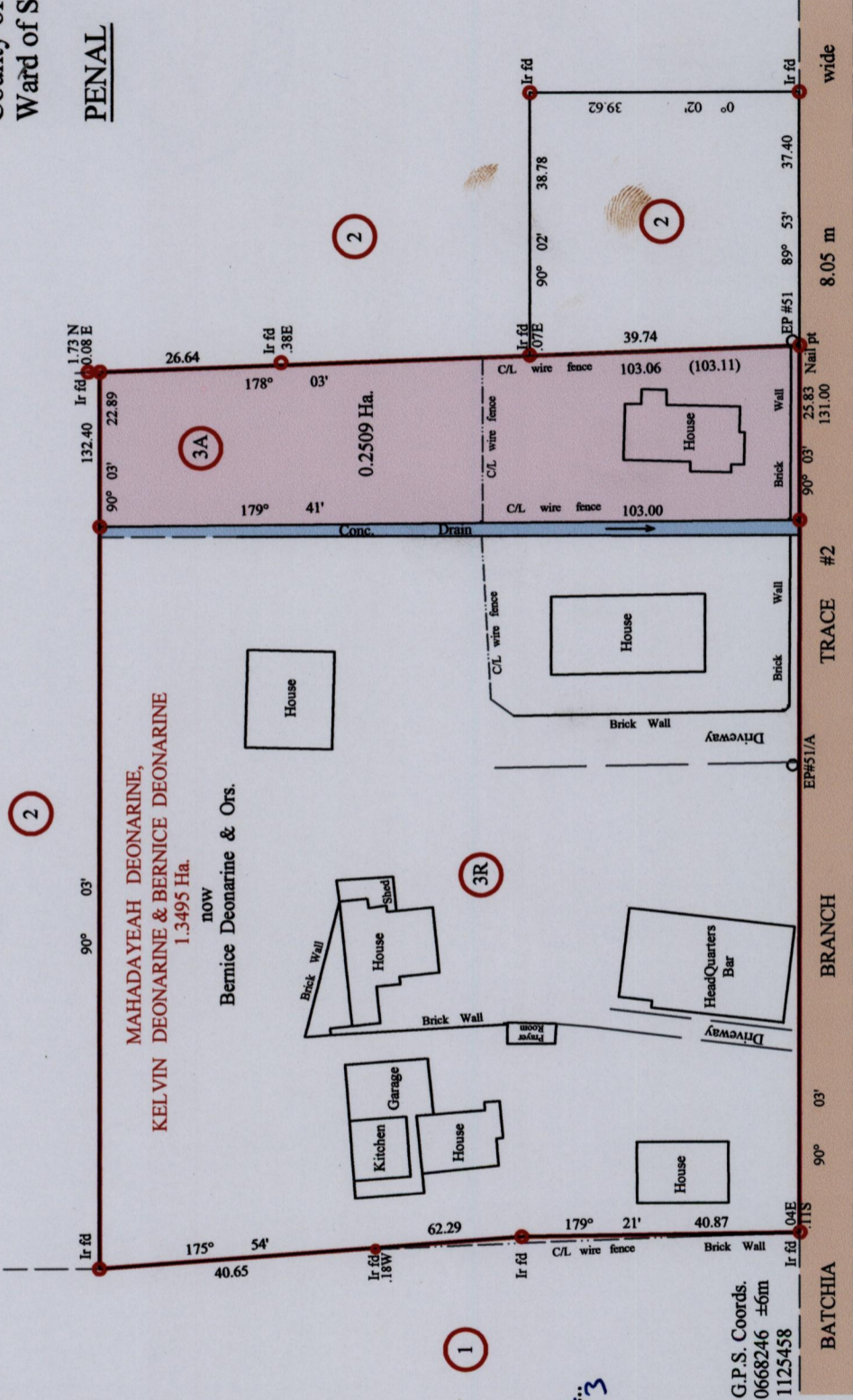


R.P.O. Vol 97 Fol 153
C.T. Vol 3500 Fol 339

Ref. Bk 1200 Fol 88

Cadastral Sheet G.13.E, 63E
County of St. Patrick
Ward of Siparia

PENAL



Approved

[Signature]
Director of Surveys 2010.8.3

Hand-held G.P.S. Coords.
UTM E 0668246 ±6m
N 1125458



PLAN of a parcel of land coloured pink in the Ward of Siparia
Comprising zero point two five zero nine hectare
Surveyed by me, with due authority, in October 2009.
In accordance with Regulation 25 (1) of the Land Surveyors' Regulations 1998,
I certify that this plan is correct.

Entered on.....
Checked by *[Signature]*

[Signature]
Trinidad and Tobago Land Surveyor
5/7

o denotes iron put except otherwise stated
Bearings are Cassini Grid based on Solar Obs.
Distances are in Metres
SCALE 1/1000

Cassini G.N. 1336

1336/90

90