

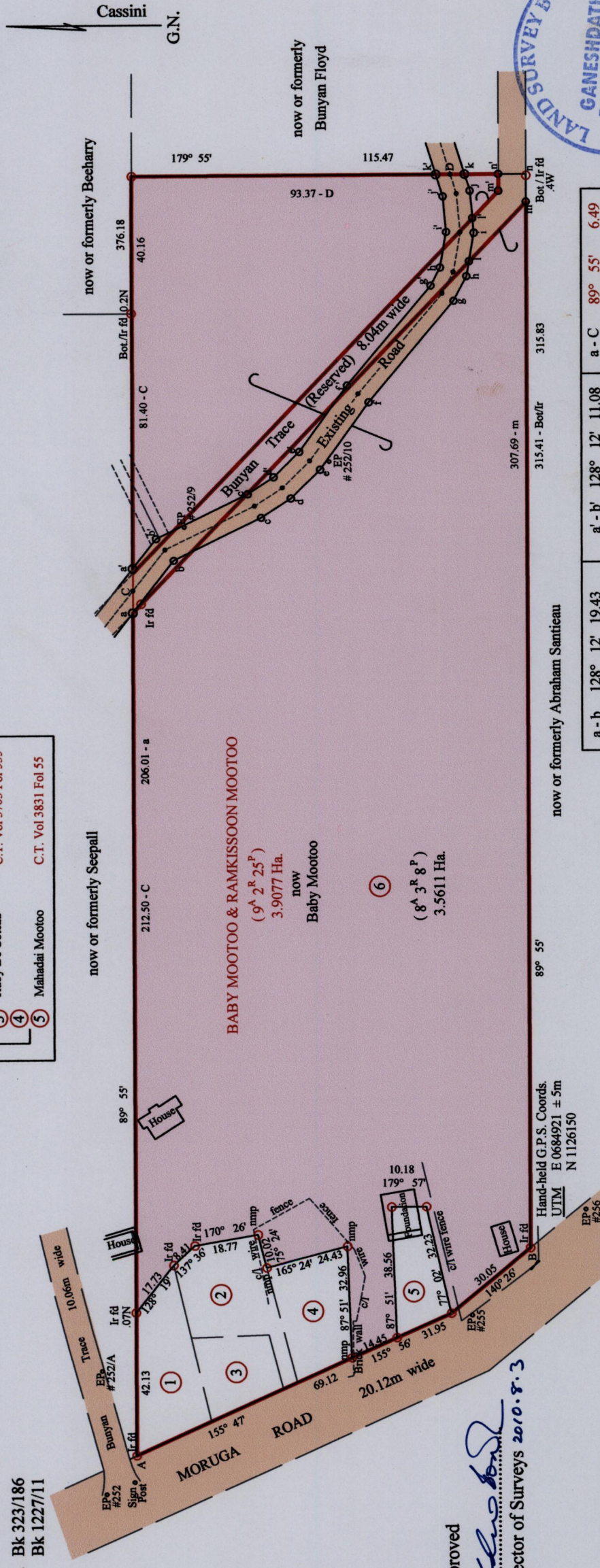
1336 25/89

Cadastral Sheet G.15.G, 64E
County of Victoria
Ward of Moruga

RPO Vol 38 Fol 567
CT Vol 1948 Fol 451

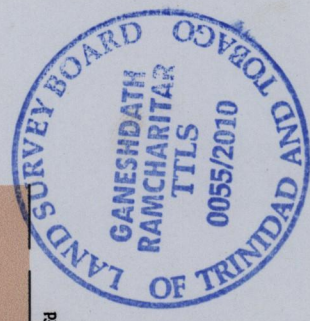
Refs. Bk 323/186
Bk 1227/11

- ① Kimehand Mootoo C.T. Vol 3831 Fol 57
- ② Ruby De Coteau C.T. Vol 3703 Fol 535
- ③ Mahadai Mootoo C.T. Vol 3831 Fol 55



Approved

[Signature]
Director of Surveys 2010.8.3



a-b	128° 12'	19.43	a-b'	128° 12'	11.08	a-c	89° 55'	6.49
b-c	153° 58'	28.50	b-c'	153° 58'	29.85	C-a'	89° 55'	6.49
c-d	146° 58'	10.40	c-d'	146° 58'	9.09	k'-D	179° 55'	4.21
d-e	135° 25'	12.04	d-e'	135° 25'	10.57	D-k	179° 55'	4.21
e-f	126° 01'	24.30	e-f'	126° 01'	23.93	a-Irfd	132° 16'	3.49
f-g	130° 06'	38.69	f-g'	130° 06'	38.10	A-B	152° 19'	130.30
g-h	117° 34'	8.11	g-h'	117° 34'	5.97			
h-i	99° 46'	12.96	h-i'	99° 46'	10.62			
i-j	84° 29'	12.31	i-j'	84° 29'	10.40			
j-k	72° 44'	5.07	j-k'	72° 44'	6.71			
l-i	99° 46'	8.50	l-i'	99° 46'	4.32			
l-m	133° 50'	24.06	l-m'	133° 50'	10.96			
m-n	89° 55'	8.14	m-n'	89° 55'	4.90			
n'-n	179° 55'	8.04	k-n'	179° 55'	9.85			
h-l	99° 46'	4.46	l'-j	84° 29'	7.98			

o denotes Iron put except otherwise stated
Bearings are Cassini Grid based on Solar Obs.
Distances are in Metres
SCALE 1/1500

PLAN of a parcel of land coloured pink in the Ward of Moruga
Containing three point five six one one hectares.
Surveyed by me, with due authority, in June 2010
In accordance with Regulation 25 (1) of the Land Surveyors' Regulations 1998,
I certify that this plan is correct.

[Signature]
Trinidad and Tobago Land Surveyor.....2010

Entered on.....
Checked by *[Signature]* 17/7