

1336

1336/74

74

R.P.O. Vol. 173 Fol. 65

C.T. Vol. 4792 Fol. 245

U.P.I.N. No.:

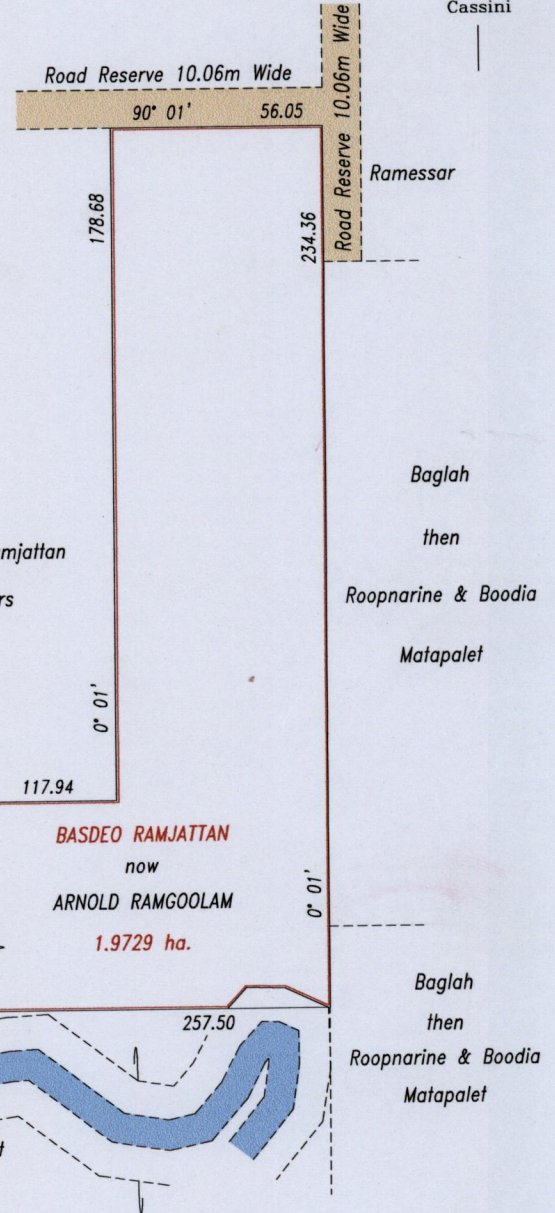
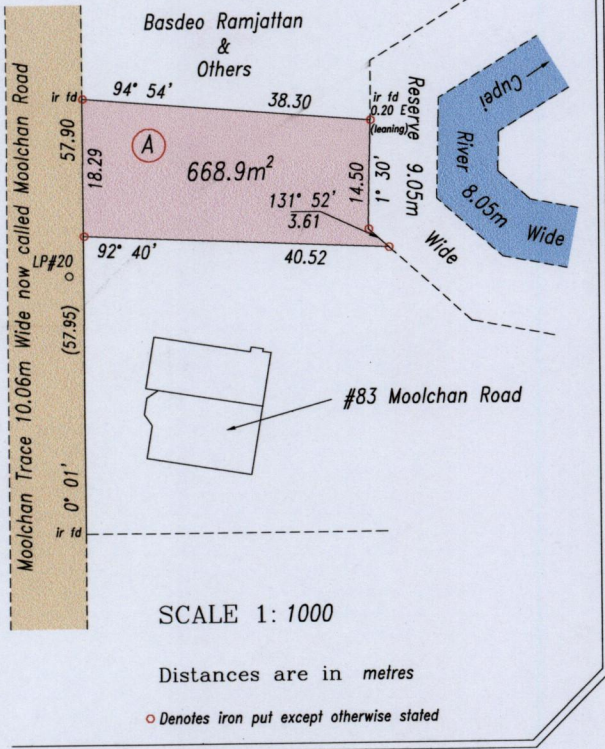
Cadastral Sheet G.18.G. 73C  
2/c

County of St. Patrick

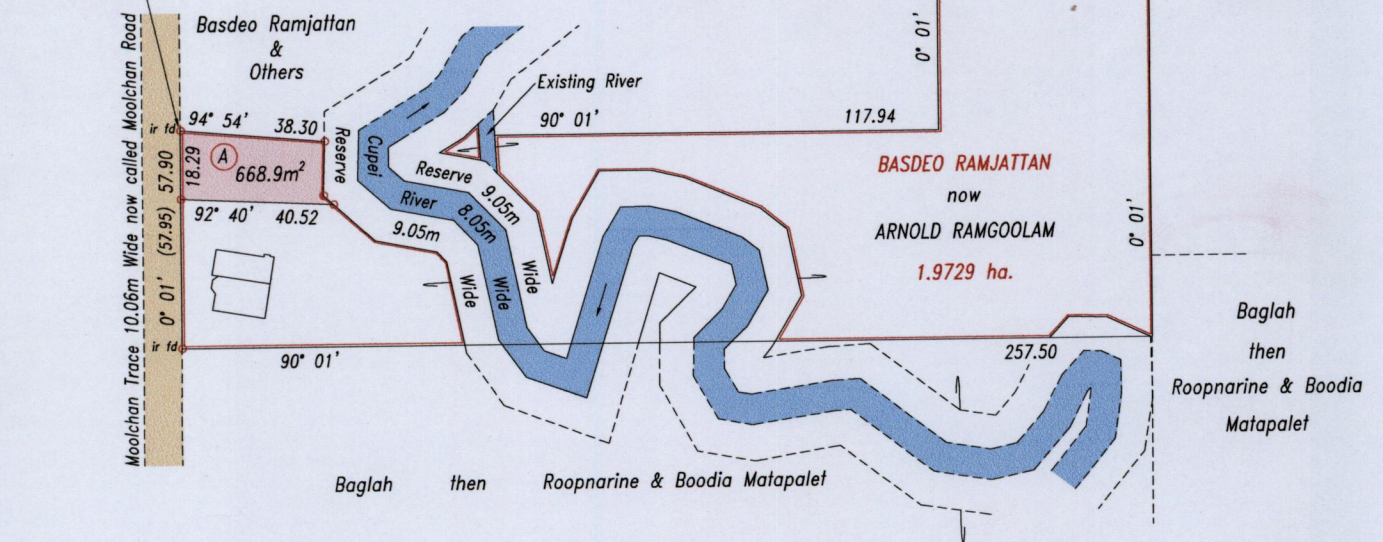
Ward of Siparia

Reference: Bk.402 Fol.245

Inset:



672 153m E  
1 119 512m N



Approved

*Lynn Roopchand*  
Director of Surveys 2010.7.9

Coordinate Information
Source: GPS (Hand Held)
Error Statement: +/- 5m
Datum: Naparima, UTM (Zone 20)

SCALE 1: 2000

Distances are in metres

○ Denotes iron put except otherwise stated

Bearings are Cassini Grid based on Solar Observations

PLAN of a parcel of land coloured pink in the Ward of Siparia  
Containing six hundred and sixty eight point nine square metres  
Surveyed by me, with due authority, in August 2009

In accordance with Regulation 25(1) of the Land Surveyors' Regulations 1998, I certify that this plan is correct.

Checked by *mm 8/7/10*  
Entered .....

*L.A. Roopchand*  
Trinidad & Tobago Land Surveyor 28/8/2009

