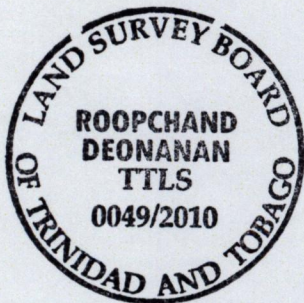
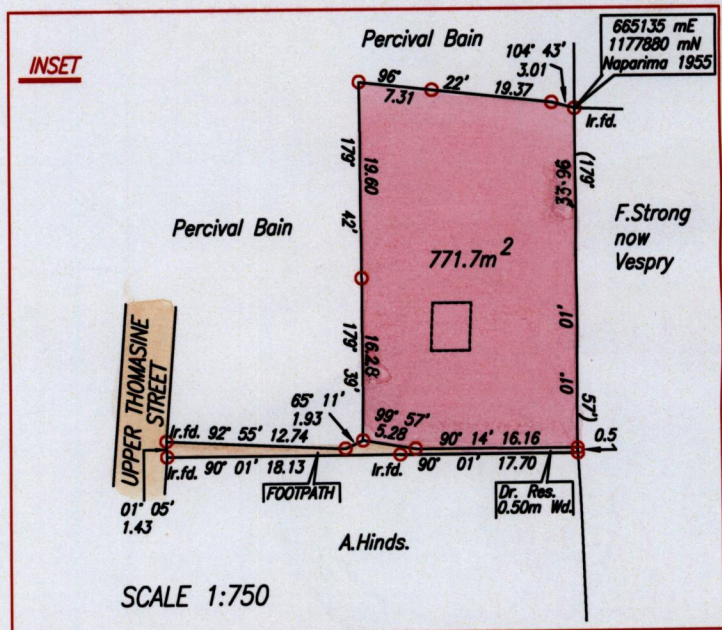
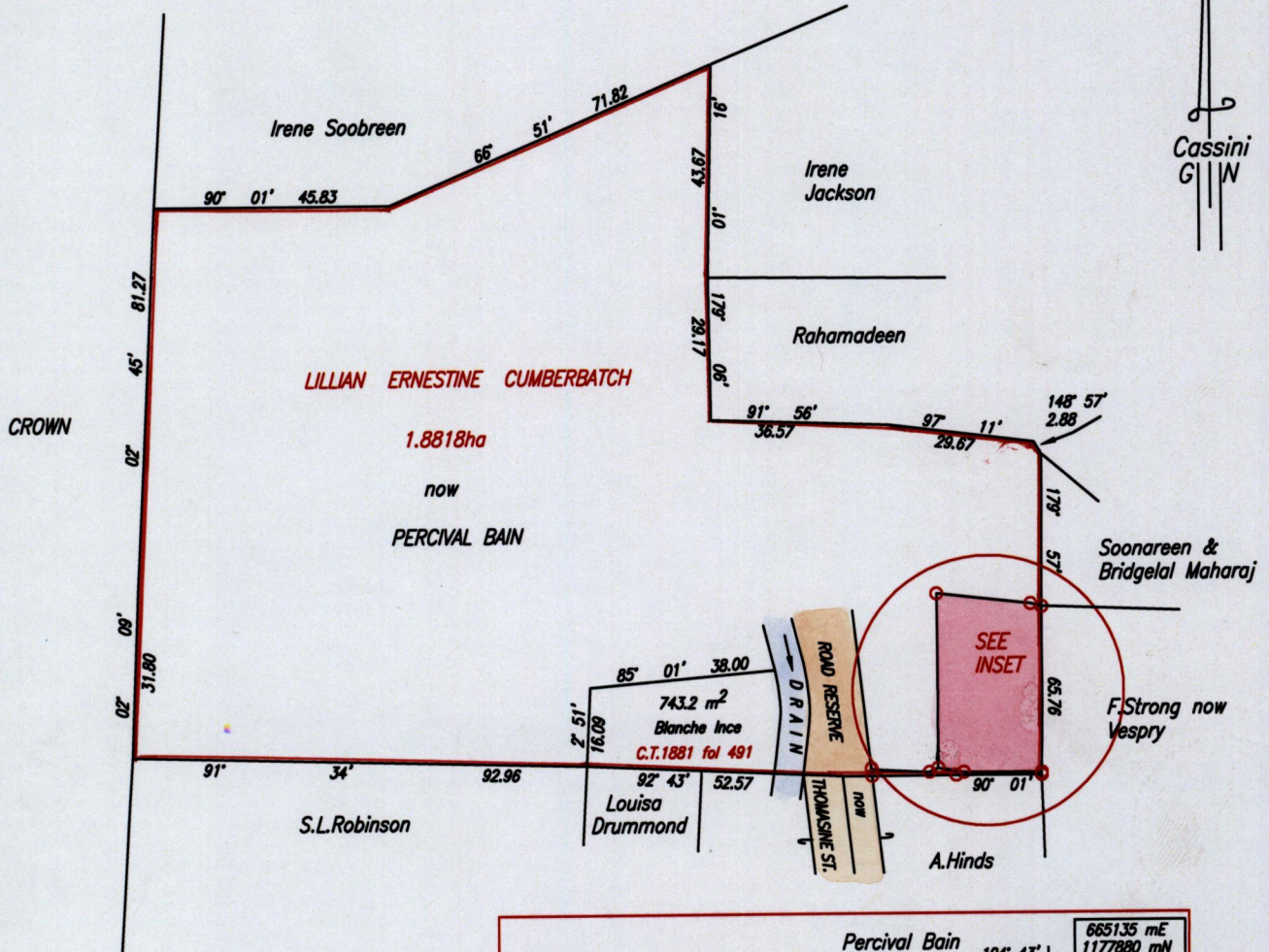


R.P.O. Vol. Fol.
C.T. Vol. 1054 Fol. 119

Cadastral Sheet A.20.L 23B
Ward of St.Anns 1/b
County of St.George

LAVENTILLE

Vide Bk. 915 fol 130
Vide Bk. 1053 fol. 449



Coordinates obtained from Topo Data

Approved *[Signature]*
Director of Surveys 2010.7.9

○ Denotes Iron put except otherwise stated.
Bearings are Cassini Grid based on Solar Observations.

SCALE 1:1500
Distances are in Metres

PLAN of a Parcel of land coloured pink in the Ward of St.Anns
Containing seven hundred and seventy one point seven square metres.
Surveyed by me, with due authority, in April, 2007
In accordance with Regulation 25(1) of the Land Surveyors' Regulations 1998,
I certify that this plan is correct.

Checked by *[Signature]* *[Signature]*

Entered Trinidad & Tobago Land Surveyor 14th May 2010.
PATH = ADA004 D:/DED/Cumberbatch.dwg.