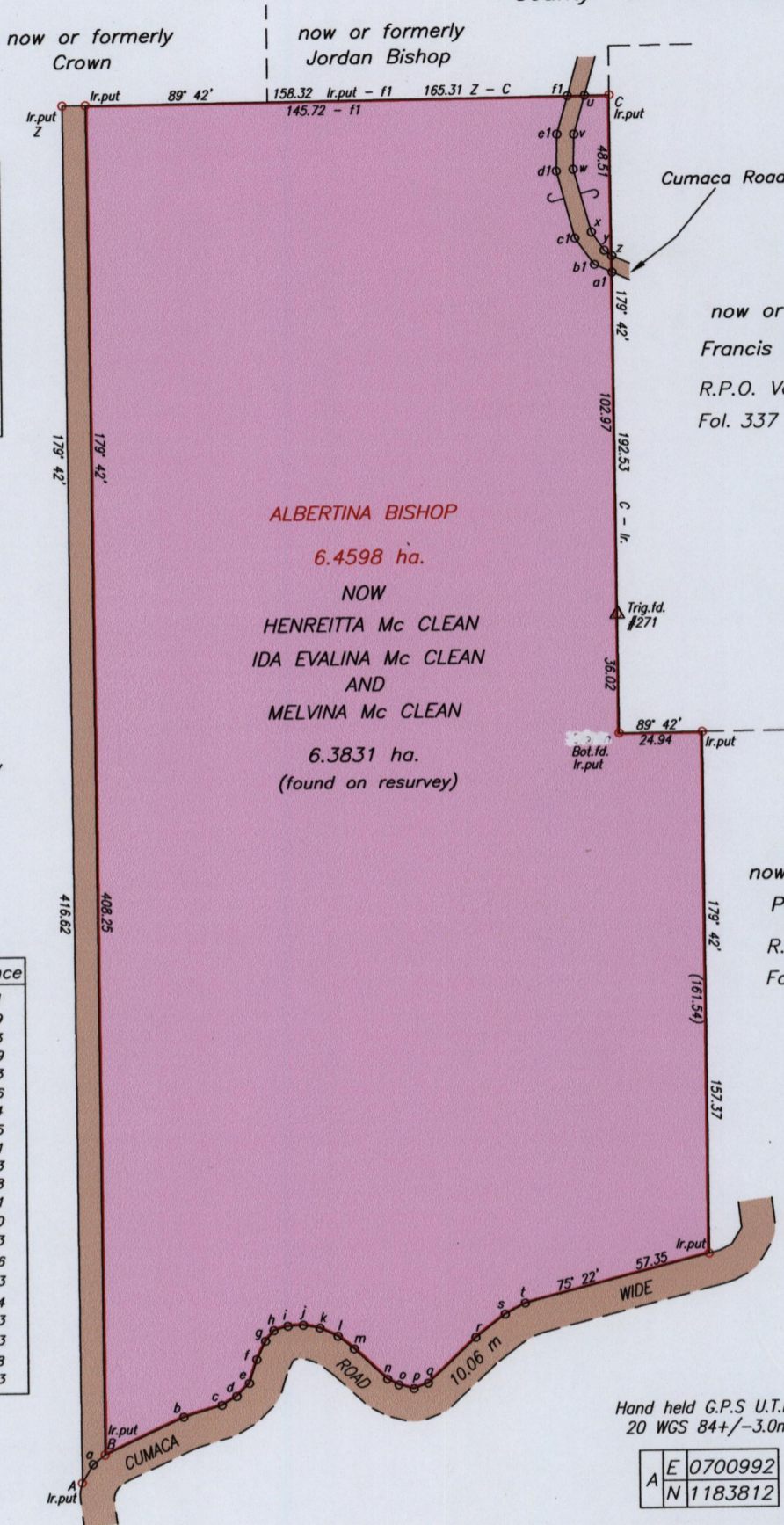


VESTED ORDER



Station	Bearings	Distance
C - u	269° 42'	7.41
u - v	195° 56'	12.08
v - w	181° 44'	10.56
w - x	164° 35'	19.78
x - y	146° 03'	6.75
y - z	125° 34'	2.80
z - a1	179° 42'	5.03
a1 - b1	294° 15'	5.81
b1 - c1	324° 17'	9.90
c1 - d1	345° 21'	21.11
d1 - e1	01° 31'	11.08
e1 - f1	15° 40'	11.99
f1 - u	89° 42'	5.19

now or formerly Crown

Bk. 16:317

Station	Bearings	Distance
A - a	30° 37'	6.51
a - B	52° 17'	4.59
B - b	64° 51'	26.43
b - c	73° 24'	12.09
c - d	59° 14'	5.23
d - e	44° 24'	5.56
e - f	17° 12'	7.64
f - g	25° 52'	6.15
g - h	39° 04'	4.11
h - i	73° 00'	4.43
i - j	86° 49'	4.68
j - k	100° 44'	5.11
k - l	114° 42'	6.00
l - m	128° 45'	6.23
m - n	133° 11'	13.76
n - o	118° 17'	3.83
o - p	104° 47'	4.74
p - q	69° 13'	4.63
q - r	46° 15'	20.03
r - s	52° 12'	11.28
s - t	61° 33'	6.93

now or formerly Peter West  
R.P.O. Vol. 84  
Fol. 587

Hand held G.P.S U.T.M  
20 WGS 84+/-3.0m

A	E 0700992
	N 1183812

SCALE 1:2000

Distances are in Metres

Approved

*[Signature]*  
Director of Surveys 2010.7.9

Bearings are Cassini Grid based on Solar Observations

Plan of a Parcel of land coloured pink in the Ward of Valencia

Containing six point three eight three one hectares

Surveyed by me, with due authority, in August 2008

In accordance with Regulation 25 (1) of the Land Surveyors' Regulations 1998,

I certify that this plan is correct.

Checked by *[Signature]*

*[Signature]*

Entered on .....

Trinidad & Tobago Land Surveyor *3/12/* 2008

