

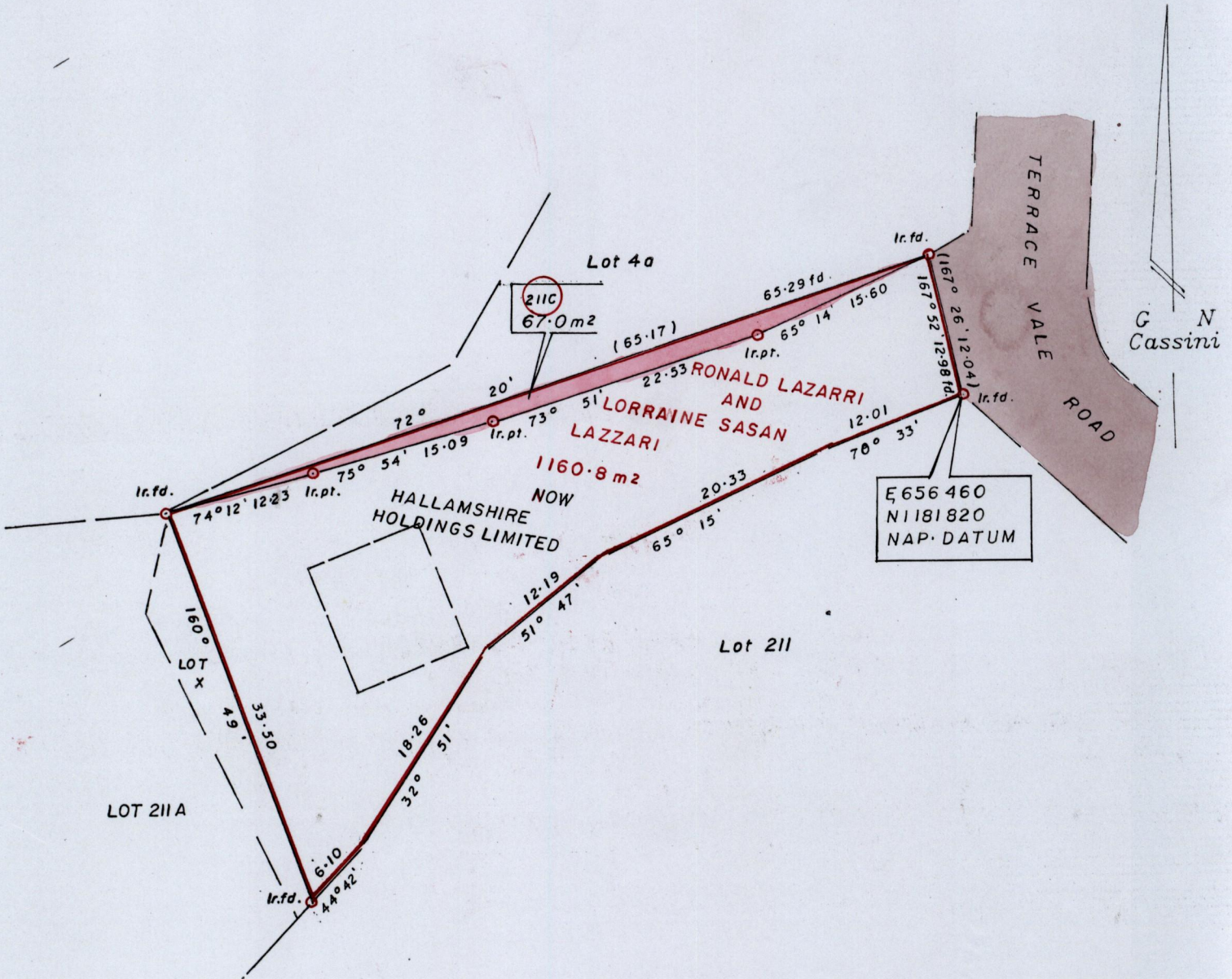
R.P.O.Vol. Fol.

Ward of Diego Martin

C.T.Vol. 4911 Fol. 2

County of St. George

Cadastral Sheet A-19-C. 12F / 2/d



c.f: L & S. PLAN RE 2

Approved

[Signature]

Director of Surveys 2010-7-5

NOTE : Parcel 211c to be Amalgamated to Parcel 4a

SCALE : 1/500

Note: To obtain compass bearings subtract 4 minutes.

Distances are in metres

PLAN of a Parcel of land coloured pink in the Ward of Diego Martin
Containing sixty seven point zero square metres.

Surveyed by me with due authority in May 2006

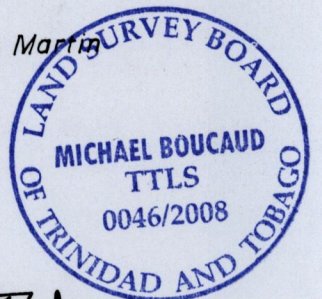
In accordance with Reg 25(1) of the Land Surveyors' Regulations 1998,
I certify that this plan is correct.

Checked by *[Signature]*

[Signature]

Entered.....

Trinidad & Tobago Land Surveyor.....



[Signature] 2008