

1336

66

Ward of Diego Martin

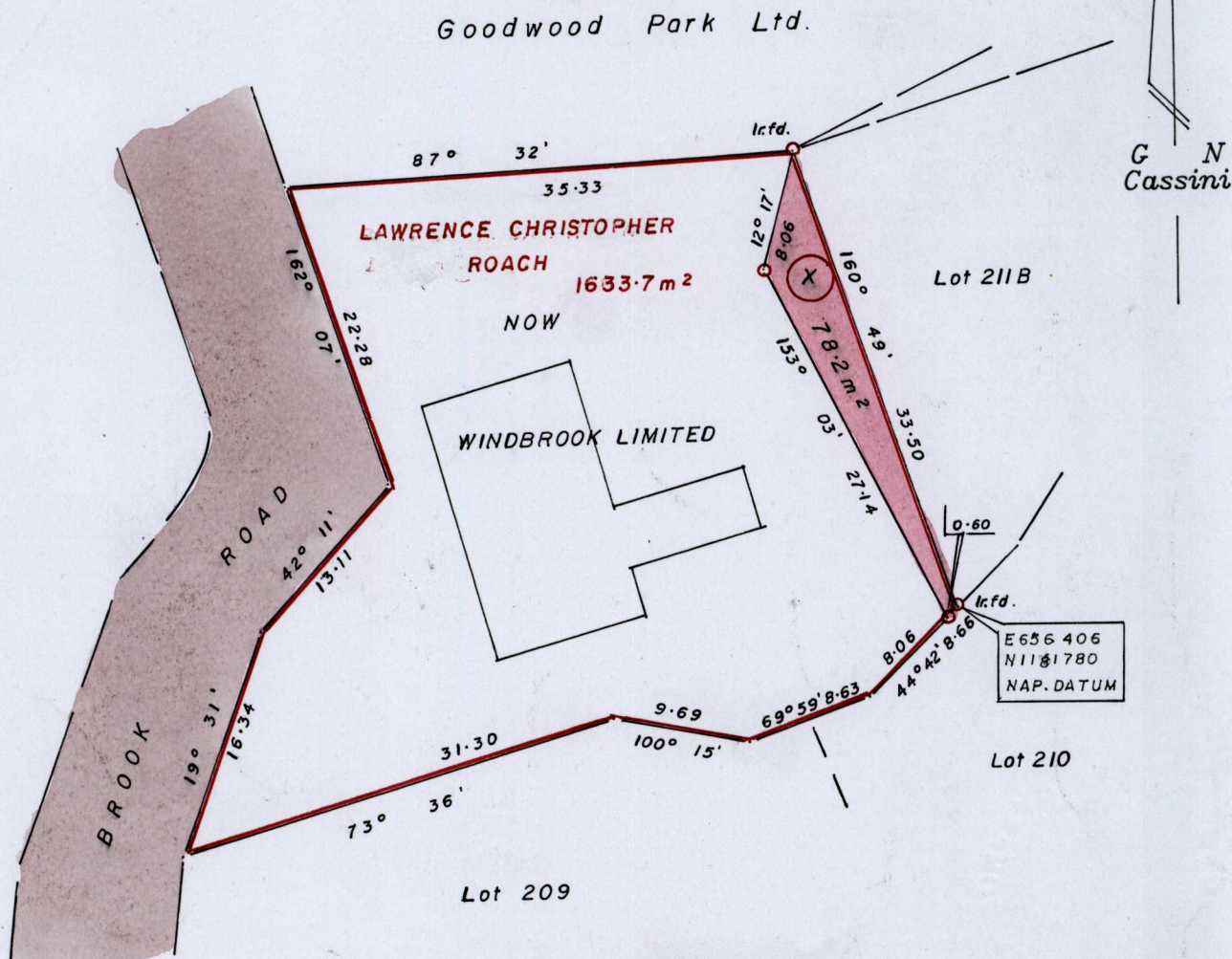
County of St. George

R.P.O. Vol. Fol.

C.T. Vol. 1798 Fol. 135

Cadastral Sheet A-19-C. $\frac{12 F}{4/d}$

Plan PE 2



c.f. L & S. PLAN: P.E. 2

NOTE: Parcel X to be Amalgamated with Parcel 211B

Approved

[Signature]
Director of Surveys 2010.7.5

SCALE : 1 / 500

Note: To obtain compass bearings subtract 4 minutes.

Distances are in metres

PLAN of a Parcel of land coloured pink in the Ward of Diego Martin
Containing seventy eight point two square metres.

Surveyed by me with due authority in May 2006

In accordance with Reg 25(1) of the Land Surveyors' Regulations 1998,
I certify that this plan is correct.

Checked by *[Signature]*

[Signature] TTLS

Entered.....

Trinidad & Tobago Land Surveyor..... 4th August 2008

