

R.P.O Vol. 59 Fol. 347
 C.T. Vol. 1306 Fol. 35

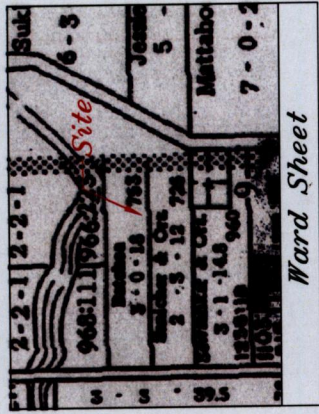
Coordinates

Ir.f.d. F : N 1126586
 E 677748

Error Statement : ±4m

Datum Definition : U.T.M. Zone 20 Naparima

Source : Magellan Hand Held GPS



Ward Sheet

CURVE TABLE			
STA	CHORD	RADIUS	BEARING
A-B	36.59	26.25	89° 41'
		40.48	

Approved: *[Signature]*
 Director of Surveys 2010.7.5

○ Denotes Iron put except otherwise stated.

Note: Bearings are U.T.M grid based on solar observations.

Plan of a Parcel of land coloured pink in the Ward of Naparima

Containing one point two four one one hectares.

Redefined by me, with due authority, in May 2009.

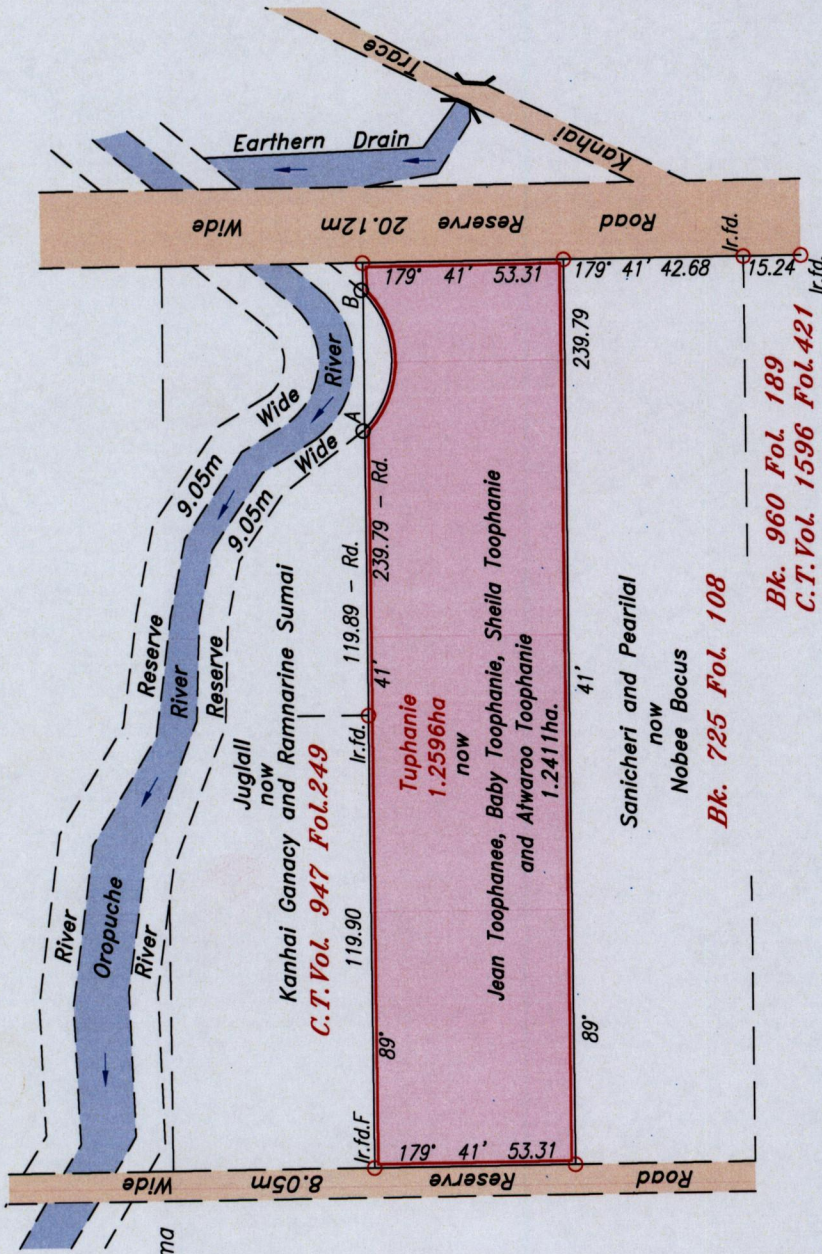
In accordance with Regulation 25(1) of the Land Surveyors' Regulations 1998, I certify that this plan is correct.

Checked by: *Mely July 10*

Entered

Trinidad & Tobago Land Surveyor 1st SUR 2010

Ward of Naparima
 County of Victoria
 Cadastral Sheet (G.14.B.), 64D
 2/a
 Parcel Address: Kanhai Trace,
 Barrackpore.



Drainage Flow
 Ref.: Bk. 332 Fol. 264
 Bk. 753 Fol. 170

SCALE 1:2000

Distances are in metres.

1336 36/63

