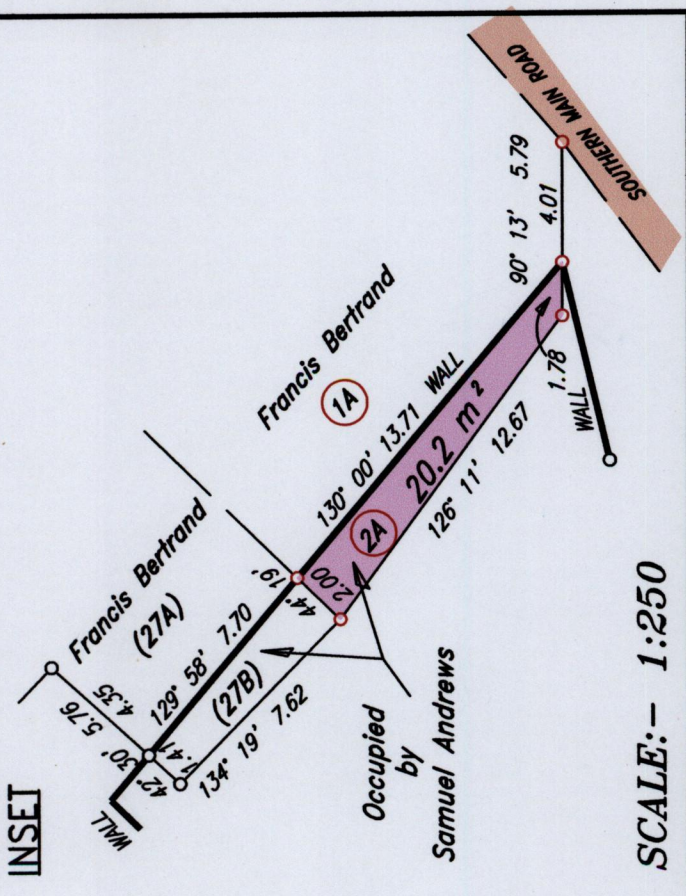
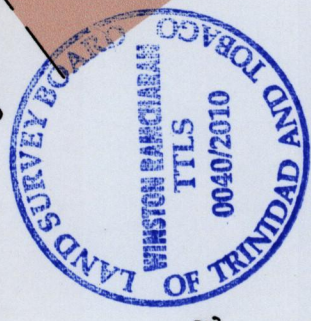
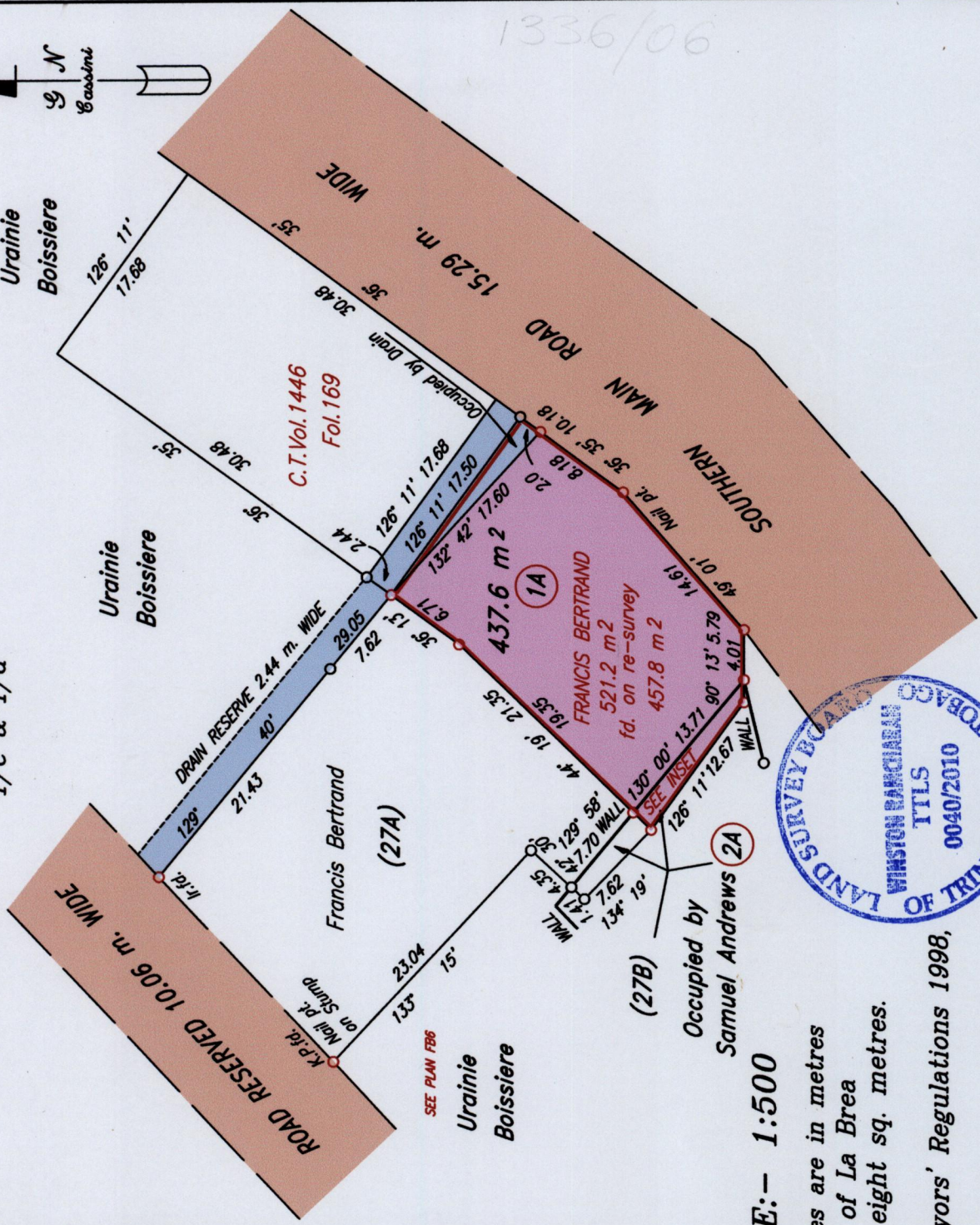


Ward of La Brea
 County of St. Patrick
 Cadastral Sheet F.15.F. 62E
 1/c & 1/d



R.P.O. Vol. 59 Fol. 61
 C.T. Vol. 4988 Fol. 19
 U.P.R.N.
 REMAINING PORTION PLAN Vol. 2057 Fol. 53

SCALE: - 1:500

Approved
 Director of surveys 2010.5.24

○ Denotes Iron put, except otherwise stated.

Bearings are based on Solar Observations
 Note: To obtain compass bearing add/subtract minutes
 PLAN of 2 Parcels of land coloured pink in the Ward of La Brea
 Containing together four hundred and fifty seven point eight sq. metres.
 Surveyed by me, with due authority, in July 2005.
 In accordance with Regulation 25 (1) of the Land Surveyors' Regulations 1998,
 I certify that this plan is correct.

Checked by: *Winston Rangelin* T.T.L.S.

Entered: Trinidad and Tobago Land Surveyor 12th April 2010