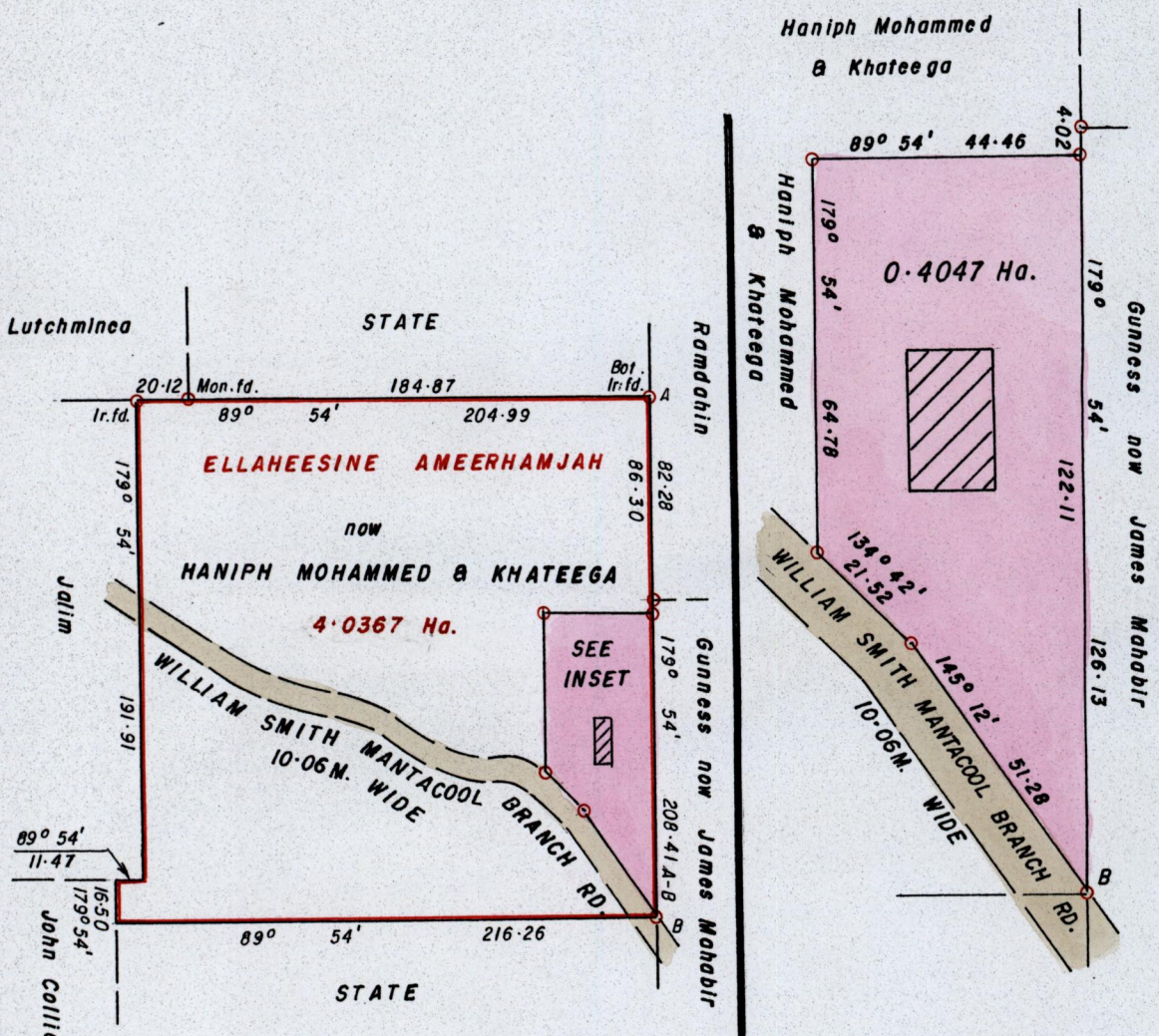


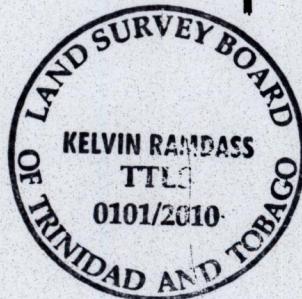
R.P.O. Vol. 55 Fol. 299
C.T. Vol. 1186 Fol. 11

Ward of Ortoire
County of Victoria
Cadastral Sheet 54F, H.I.M.
4/a

Ref. Bk. 326 / 337
Bk. 1253 / 634
(Unreg. subdivision)



INSET
Scale: 1 / 1250



Coordinates obtained by Hand held G.P.S.
WGS 84, UTM, Zone 20, +/- 5m.
Point B
689585 m E. , 1135142 m N.

Approved
[Signature]
Director of Surveys 2010.7.1

○ Denotes Iron put unless otherwise stated
Bearings are Cassini Grid based on Solar Obs.
SCALE 1 / 3000
Distances are in METRES

Note: To Obtain compass bearings add/subtract 6 minutes

PLAN of a Parcel of land coloured PINK in the Ward of Ortoire
Containing zero point four zero four seven hectare
Prepared by me, with due authority, from a survey done by Seeram Kallicharan in February 1978
In accordance with Regulation 25 (1) of the Land Surveyors' Regulations 1998,
I certify that this plan is correct.

Checked by *[Signature]* 20/6/10
Entered *[Signature]* Kelvin Randass
Trinidad and Tobago Land Surveyor..... 01/03/2010