

Cadastral Sheet (I.19.E.)

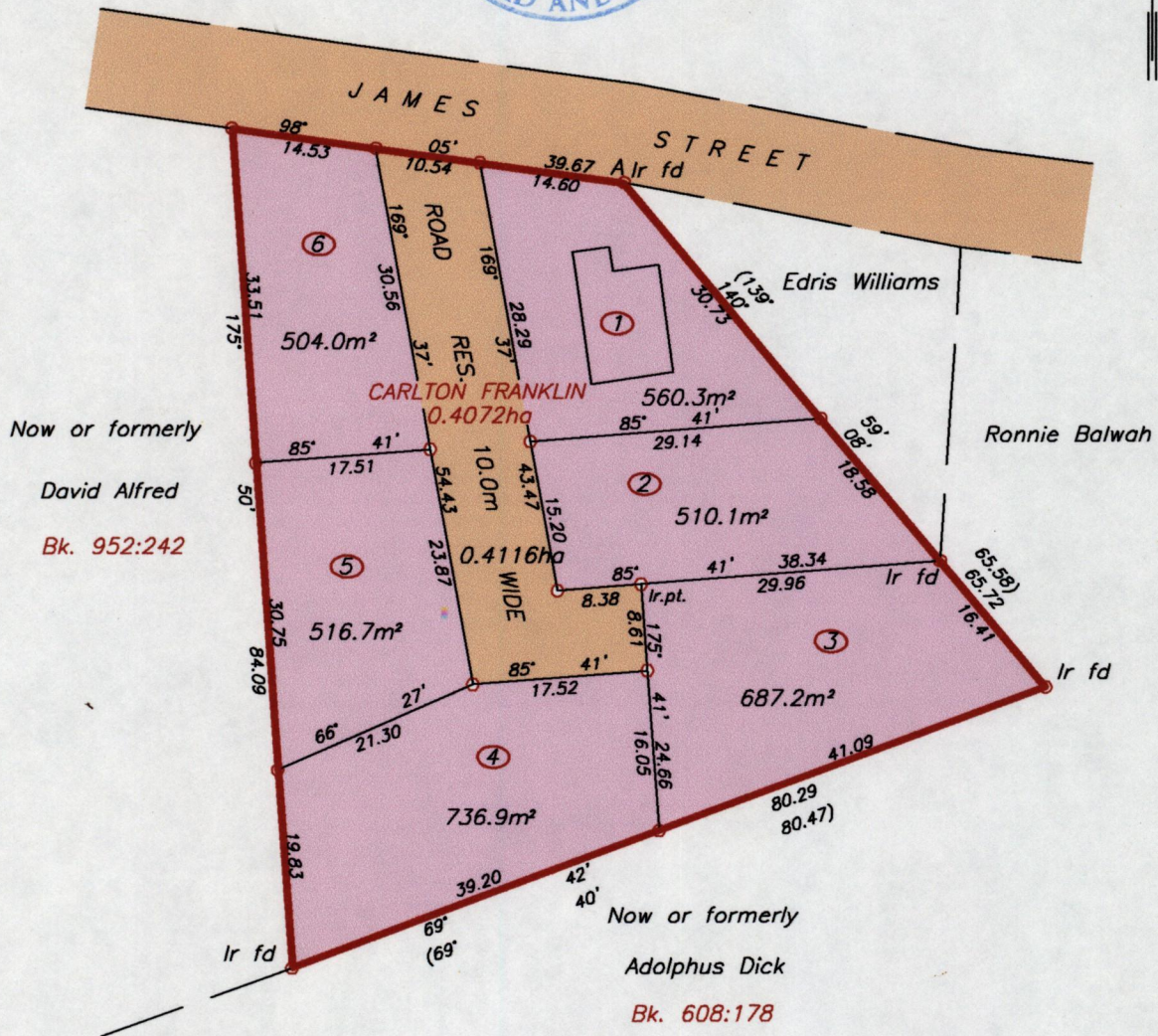
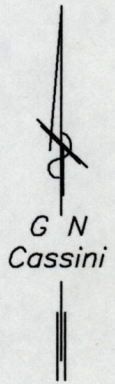
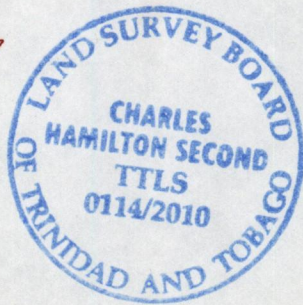
Ward of Tobago

Parish of St. Mary

Goodwood

R.P.O. Vol. 654 Fol. 627

C. T. Vol. 1225 Fol. 357



A = E 757755 +/- 5.0m  
N 1239479

References

Bk. 952:241

Approved *[Signature]*  
Director of Surveys 2010.6.18

SCALE 1:750  
Distances are in METRES

- Denotes Iron put unless otherwise stated
- Bearings are based on Solar observations

PLAN of six Parcels of land coloured pink in the Ward of Tobago  
Containing together zero point three five one five hectare  
Surveyed by me, with due authority, in September 2007  
In accordance with Regulation 25 (1) of the Land Surveyors' Regulations 1998,  
I certify that this Plan is correct.

Checked by *[Signature]* 16/6/10

*Charles H. Second* T.T.L.S.

Entered on .....

Trinidad & Tobago 7th April 2010  
Land Surveyor