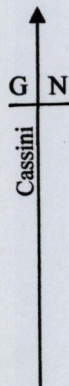


1336

1336/40

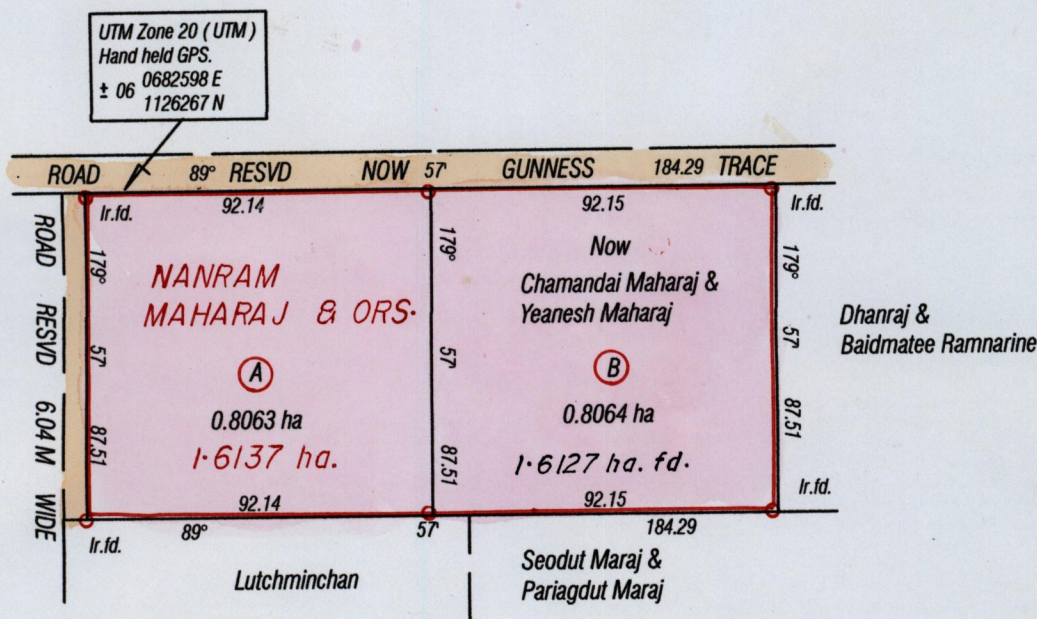
4()

Cadastral Sheet G 15 E 64 E
County of Victoria 1/b & 1/d
Ward of Savana Grande



R.P.O Vol. 232 Fol. 133
C.T Vol. 4584 Fol. 165

Remaining Portion Plan Bk. 1227 Fol. 34



Approved: *[Signature]*
Director of Surveys 2010.6.21

Bearings are Cassini Grid based on Solar Obs.
Denotes iron put except otherwise stated
add

SCALE 1 / 2000
Distances are in metres

Note: To obtain compass bearing subtract minutes
PLAN of 2 Parcels of land coloured pink in the Ward of Savana Grande
Containing one point six one two seven hectares
Surveyed by me, with due authority, in April 2010
In accordance with Regulation 25 (1) of the Land Surveyors' Regulations 1998, I certify
that this plan is correct

Checked by: *[Signature]*
Entered on: *[Signature]*
Trinidad & Tobago Land Surveyor. 27th April 2010