

REMAINING PORTION

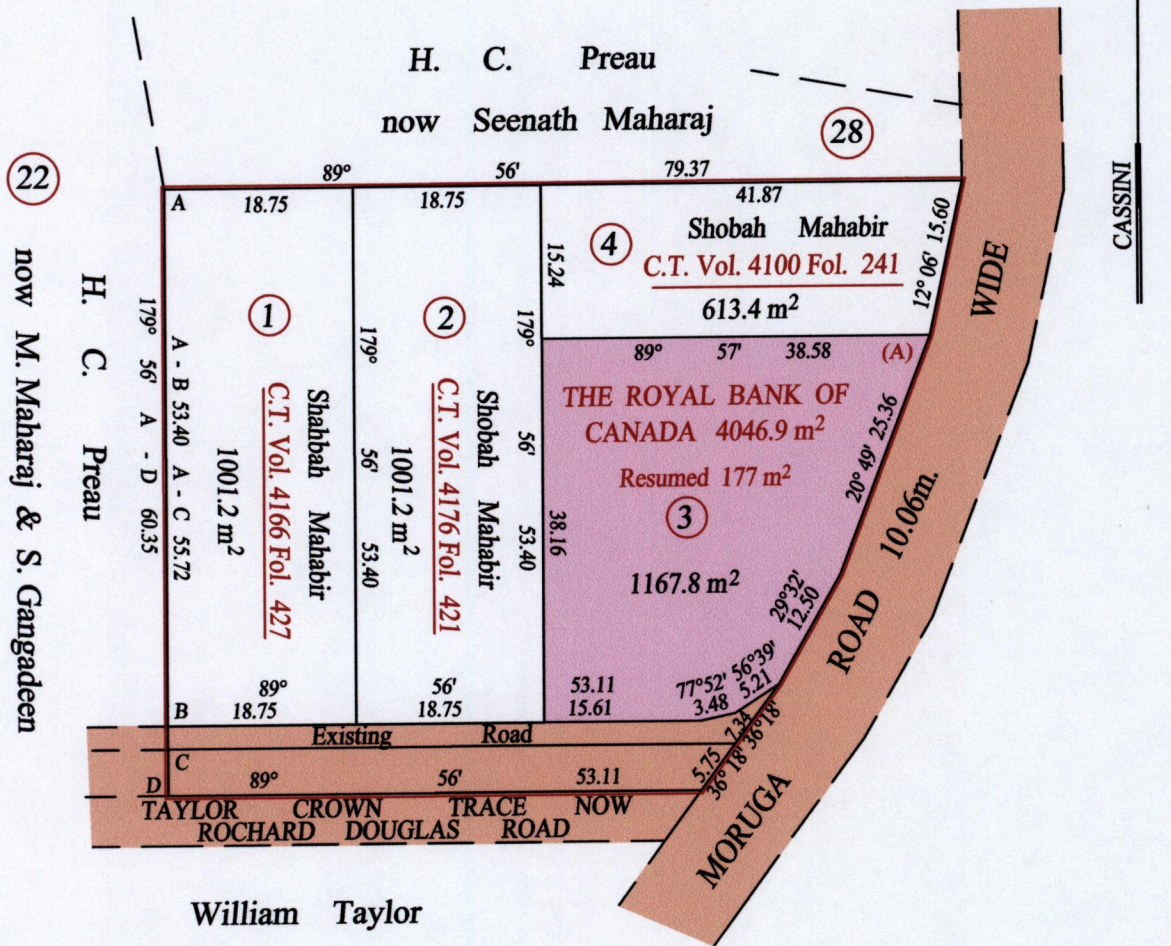
R.P.O. Vol. 14 Fol. 261

C.T. Vol. 583 Fol. 39

Ward of Savana Grande

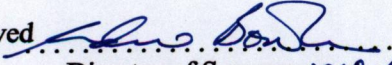
County of Victoria

Cadastral Sheet (G.15.B.) 64.B. / 4/d



At Station (A)
N 1128927
E 0684675
Reading taken with
Handheld G.P.S.
U.T.M. Zone 20
Naparima
± 5 m.

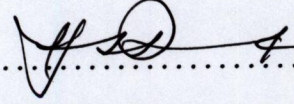
Vide Bk. 324 fol. 154
Vide Plan R. H. 20

Approved 
Director of Surveys 2010.6.11

SCALE : 1:750

Note: Bearings are cassini grid based on solar observations Distances are in metres
This is a true copy of a diagram of four thousand and forty six point nine square metres,
originally transferred to The Royal Bank of Canada, shewing a portion
coloured pink and containing one thousand one hundred and sixty seven point eight square metres
being the remainder after three (3) previous transfers of another portion of the land
and one (1) resumption.

In accordance with Regulation 25 (1) of the Land Surveyors' Regulations 1998,
I certify that this plan is correct.

Checked by  9/6/10

Entered on Trinidad & Tobago Land Surveyor 1.06 2010

