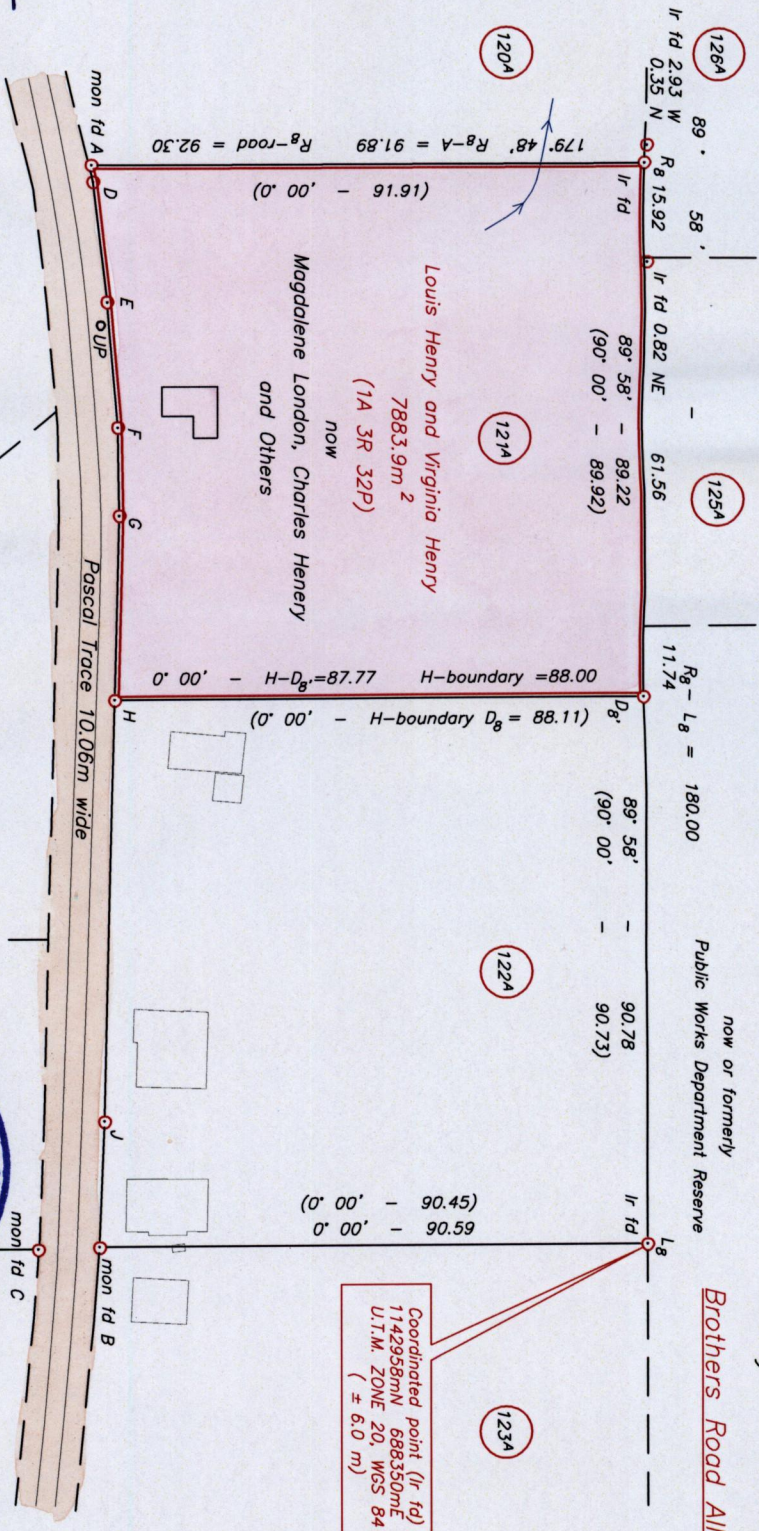


Bk 671 folio 262
S.O. 31/31 road notes

Brothers Road Allotment

LINE	BEARING	DISTANCE
A-D	75°-56'	2.90
D-E	83°-17'	20.12
E-F	85°-04'	20.75
F-G	89°-02'	14.70
G-H	91°-23'	30.74
H-J	91°-23'	69.85
J-B	92°-19'	20.98
B-C	178°-19'	10.23

LEGEND
 [] building
 OUP utility pole
 ⊙ no mark put
 — dry ravine



Approved *[Signature]*
 Director of Surveys
 2010.6.9

⊙ Denotes Iron Put unless otherwise stated
 Bearings are Cassini Grid based on Solar Obs.

PLAN of one parcel of land coloured pink in the Ward of Charuma
 Containing seven thousand eight hundred and eighty three point nine square metres
 Surveyed by me, with due authority, in October 2009
 In accordance with Regulation 25(1) of the Land Surveyors' Regulations 1998, I certify that this plan is correct

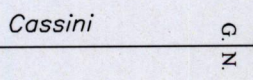
Checked by *mmw 7/6/10*

Entered by



[Signature]
 Land Surveyor

Distances are in Metres
 SCALE 1 : 1250



Trinidad and Tobago Land Surveyor 2009