

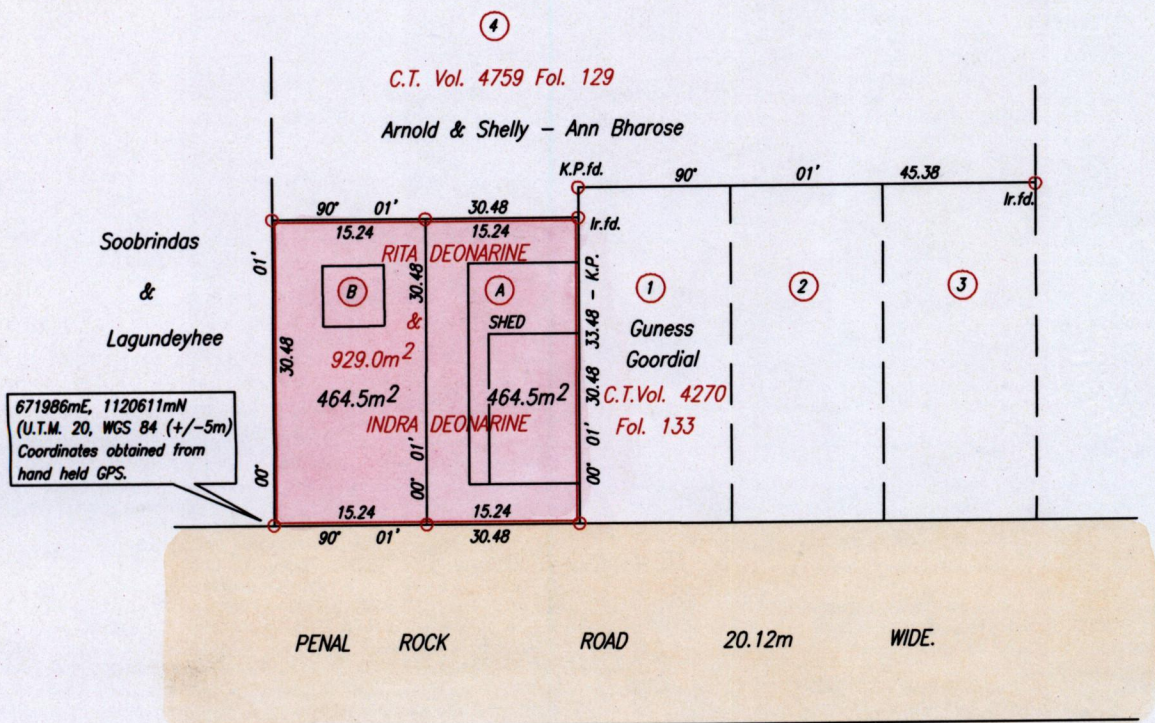
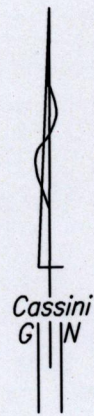
1336  
1336/26

26

R.P.O. Vol. 153 Fol. 289  
C.T. Vol. 4600 Fol. 55

Cadastral Sheet G.18.C. 73C  
Ward of Siparia 2/a,2/c  
County of St.Patrick.  
Penal Rock Road

Vide Plan BK. 720 fol. 175  
Plan J.D. 35



Approved *[Signature]*  
Director of Surveys 2010.6.11

SCALE 1:750  
Distances are in Metres

○Denotes Iron put except otherwise stated.  
Bearings are Cassini Grid based on Solar Observations.  
PLAN of 2 Parcels of land coloured pink in the Ward of Siparia  
Containing together nine hundred and twenty nine zero square metres.  
Surveyed by me, with due authority, in November, 2009  
In accordance with Regulation 25(1) of the Land Surveyors' Regulations 1998,  
I certify that this plan is correct.

Checked by *[Signature]* Mal 2/6/10

Entered . . . . . Trinidad & Tobago Land Surveyor *[Signature]* 24<sup>th</sup> May . . . . . 2010