

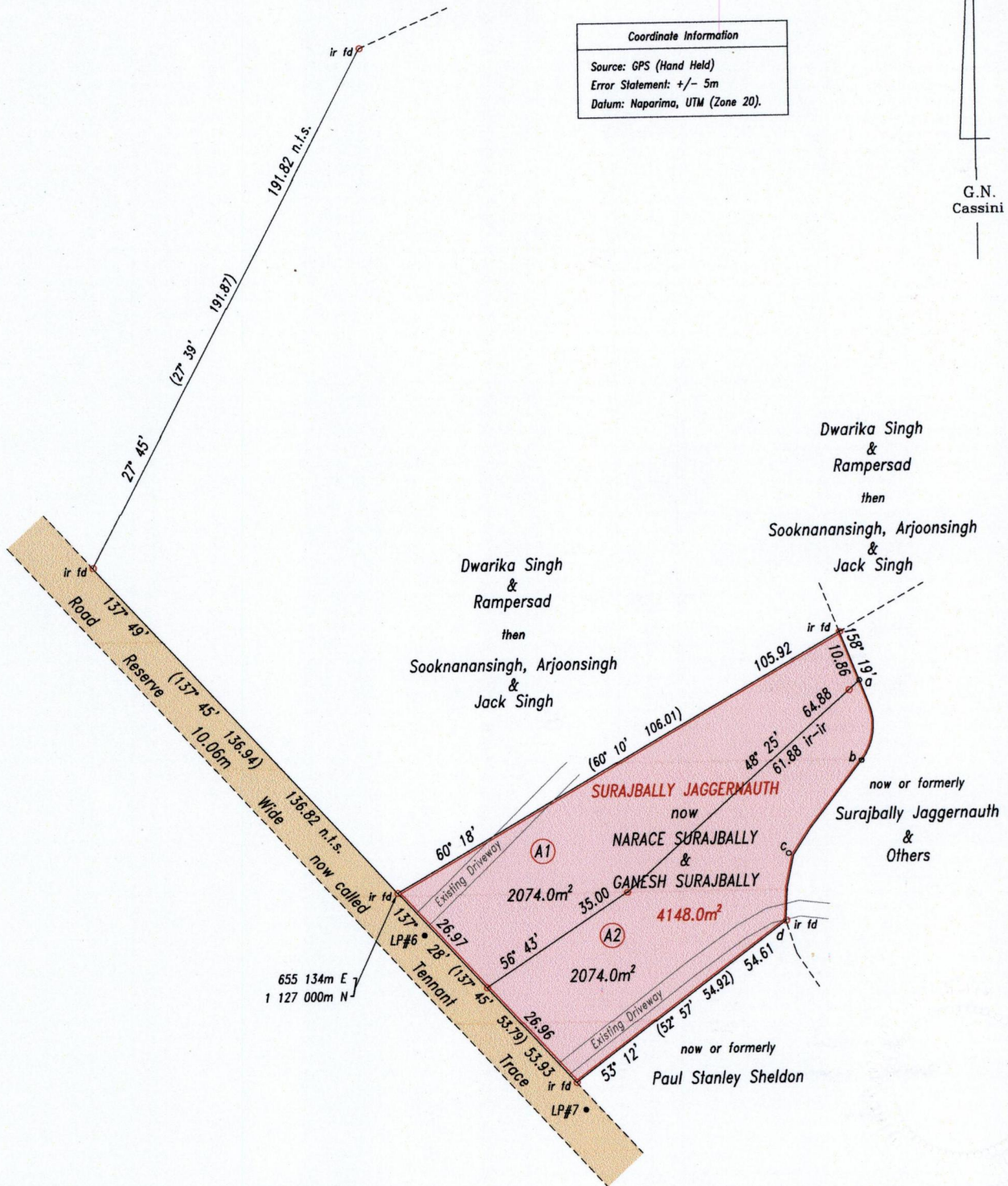
R.P.O. Vol. 166 Fol. 415
C.T. Vol. 1426 Fol. 37
U.P.I.N. No.:

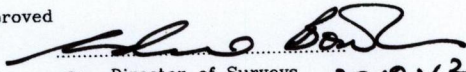
Cadastral Sheet G.12.D. 63E
County of St. Patrick 1/b
Ward of Siparia

Reference: Bk. 930 Fol.124

Coordinate Information
Source: GPS (Hand Held)
Error Statement: +/- 5m
Datum: Naparima, UTM (Zone 20).

G.N. Cassini



Approved 
Director of Surveys 2010.12.30

SCALE 1: 1250

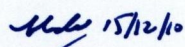
Distances are in metres


Denotes iron put except otherwise stated

Bearings are Cassini Grid based on Solar Observations

PLAN of 2 parcels of land coloured pink in the Ward of Siparia
Containing together four thousand one hundred and forty eight point zero square metres
Surveyed by me, with due authority, in February 2010

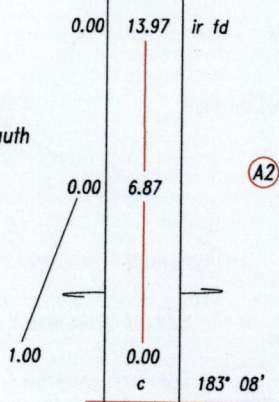
In accordance with Regulation 25(1) of the Land Surveyors' Regulations 1998, I certify that this plan is correct.

Checked by  15/12/10
Entered

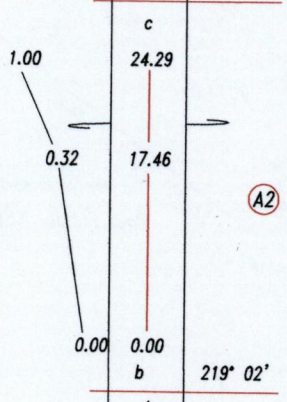

Trinidad & Tobago Land Surveyor 7/4/2010



now or formerly
Surajbally Jaggernauth
&
Others



now or formerly
Surajbally Jaggernauth
&
Others



now or formerly
Surajbally Jaggernauth
&
Others

